

\* VJ  
**UNITED STATES PUBLIC LAND SURVEY CORNER CERTIFICATE**  
**OF**

Land Survey Monuments situated in Section 6, Township 88 N, Range 13 W, of the Fifth Principal Meridian, Black Hawk County, Iowa  
Previously recorded in Book N/A, Page .

Show reason for preparing this certificate, the evidence and detailed procedures used in establishing the corner positions and monumentation found or placed.)

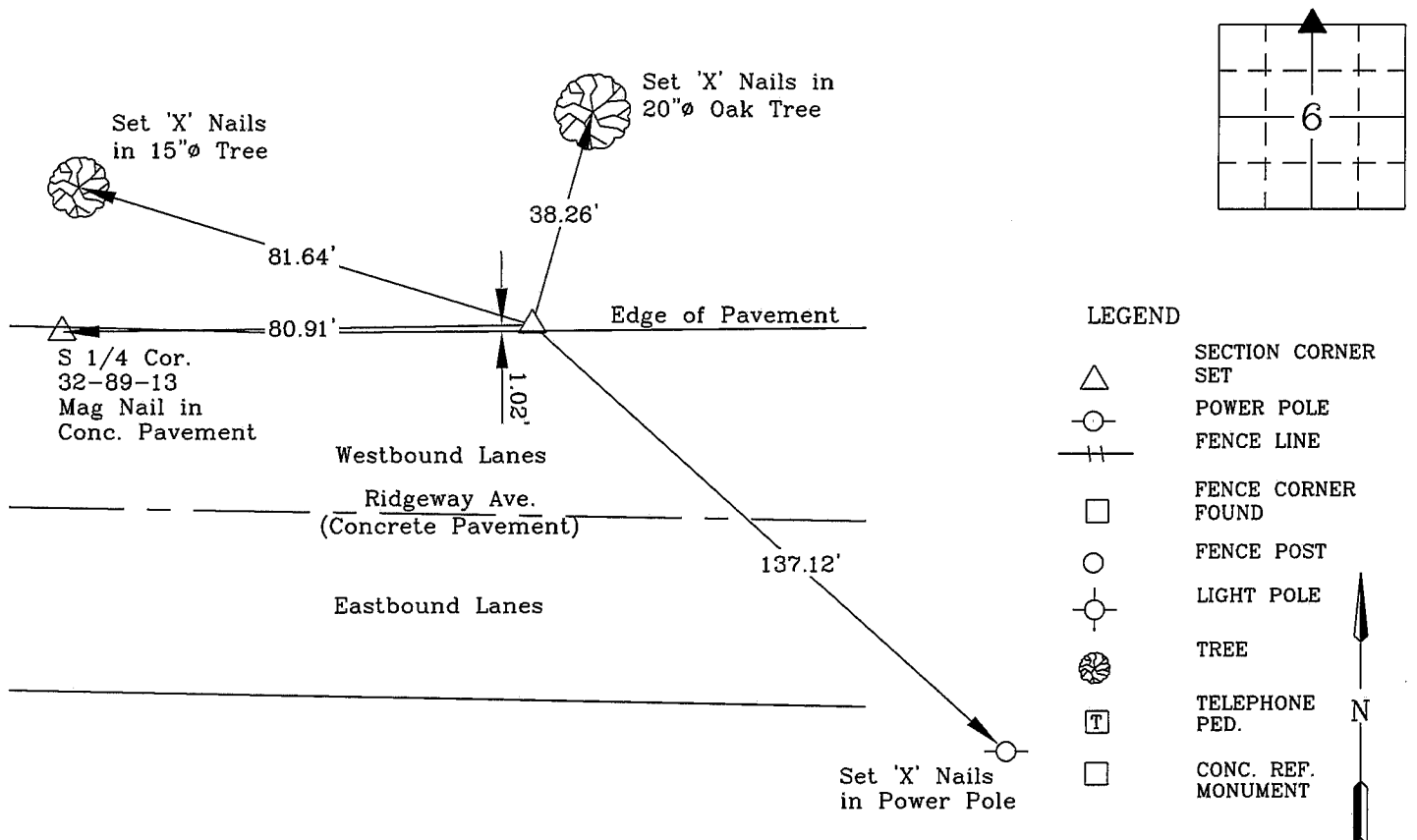
Monument Description and Remarks: N 1/4 Corner

Previous Monument was destroyed during the widening of Ridgeway Ave. for a left turn lane.

Set a 5/8" x 24" Rebar w/ Red Cap #12088 5" Deep at location of previous monument by coordinates as established from adjacent survey control points. No previous corner certificate on file.

**PLAN - VIEW**

(Show a minimum of three reference ties to durable physical objects, relevant monuments and physical conditions recovery of the corner.)



I hereby certify that this land surveying document was prepared and the related survey work was performed by me or under my direct personal supervision and that I am a duly licensed Land Surveyor under the laws of the State of Iowa.



Wendell J. Lupkes 4-13-09  
**WENDELL J. LUPKES, L.S.** DATE  
License number 12088  
My license renewal date is December 31, 2010  
Pages or sheets covered by this seal: 1

**List Corner to be Indexed**

Corner	Section	Twp	Range
North 1/4	6	88 N	13 W

**SECTION CORNER**  
**REFERENCE TIES**

Scale  
NONE  
drawn by  
MAK  
date  
4/8/09