

UNITED STATES PUBLIC LAND SURVEY CORNER CERTIFICATE

OF

Land Survey Monuments situated in Section 6, Township 88N, Range 13W
of the Fifth Principal Meridian, BLACK HAWK County, Iowa.

SC
MISC ✓
INDEX ✓
MARGIN ✓
DOOF ✓
COMPADE ✓
County Assessor

BLACK HAWK COUNTY IOWA:SS
Filed for recorded Dec 22, 19 97 at 12:170
4:00 P.M. and recorded in Book 328
of Misc Page 562
Recorder
FEE 1-5.00/
WAYNE CLAASSEN ENGINEERING AND SURVEYING, INC.

WAYNE CLAASSEN ENGINEERING AND SURVEYING, INC.
P.O. BOX 898 WATERLOO, IOWA 50704-0898

PHONE: (VOICE) 319-235-6294
(FAX) 319-235-0028

UNITED STATES PUBLIC LAND SURVEY CORNER CERTIFICATE

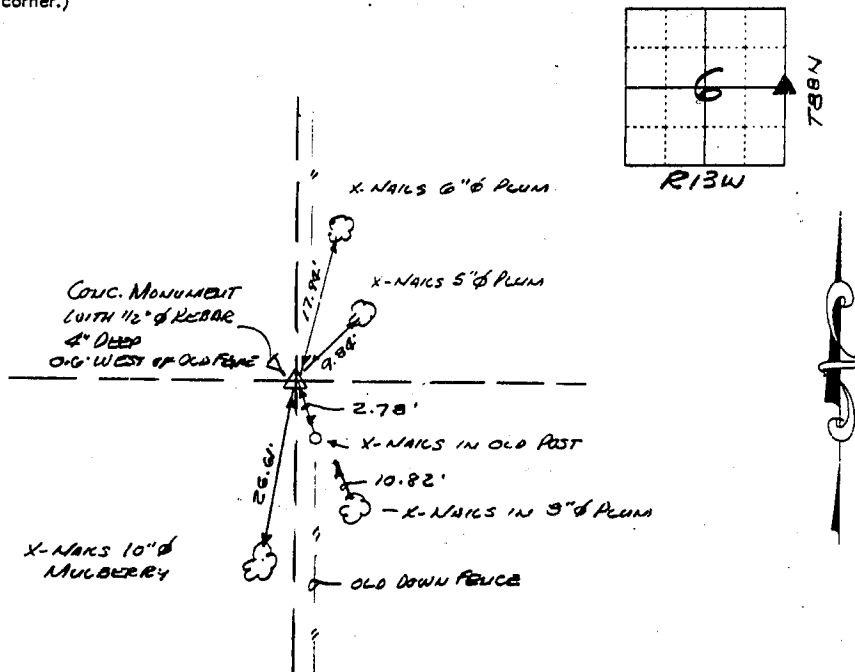
Land Survey Monuments situated in Section 6, Township 88N, Range 13W
of the Fifth Principal Meridian, BLACK HAWK County, Iowa.
Previously recorded in 1144 MISC BK 294 P.381 in County Recorder's Office.
(book, page, document number, etc.)

(Show reason for preparing this certificate, the evidence and detailed procedures used in establishing the corner positions and monumentation found or placed.)

Monument Description and Remarks FOUND CONCRETE MONUMENT WITH 1/2" x 1/2" REBAR
IN CENTER, 4" DEEP AT O.G.'S WEST OF OLD DOWN FENCE.
(SEE LD 549-106 - STATE IOWA PATENT TO YOUNG 1986 - SURVEY PLAT BY LCU 1975
1975 ON THIS TRACT FOR IOWA HIGHWAY COMMISSION - EXCEPT R/W.)

PLAN - VIEW

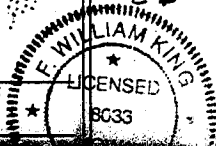
(Show a minimum of three reference ties to durable physical objects, relevant monuments and physical conditions that will enable recovery of the corner.)



475-65

I hereby certify that the survey work was completed and this certificate was prepared by me or under my direct personal supervision and that I am a duly licensed land surveyor under the laws of the state of Iowa.

Signature: F. William King
(Name typed or printed: F. WILLIAM KING
5033



List Corners to be Indexed

| Corners | Section | Twp | Range |
|---------|---------|-----|-------|
| E1/4 | 6 | 88N | 13W |