



Doc ID: 007059070001 Type: GEN
Recorded: 06/21/2016 at 10:43:09 AM
Fee Amt: \$7.00 Page 1 of 1
Black Hawk County Iowa
SANDIE L. SMITH RECORDER

File 2016-00021932

GW*

WAYNE CLAASSEN ENGINEERING AND SURVEYING, INC.
P.O. BOX 898 WATERLOO, IOWA 50704-0898

PHONE: (VOICE) 319-235-6294
(FAX) 319-235-0028

UNITED STATES PUBLIC LAND SURVEY CORNER CERTIFICATE

Land Survey Monuments situated in Section 05, Township 88 North, Range 13 West, of the Fifth Principal Meridian, Black Hawk County, Iowa.

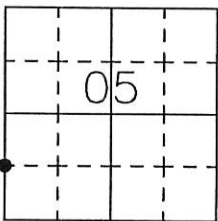
Previously recorded in Misc. Book 328-561 in County Recorder's Office.
(book, page, document number, etc.)

Monument Description and Remarks

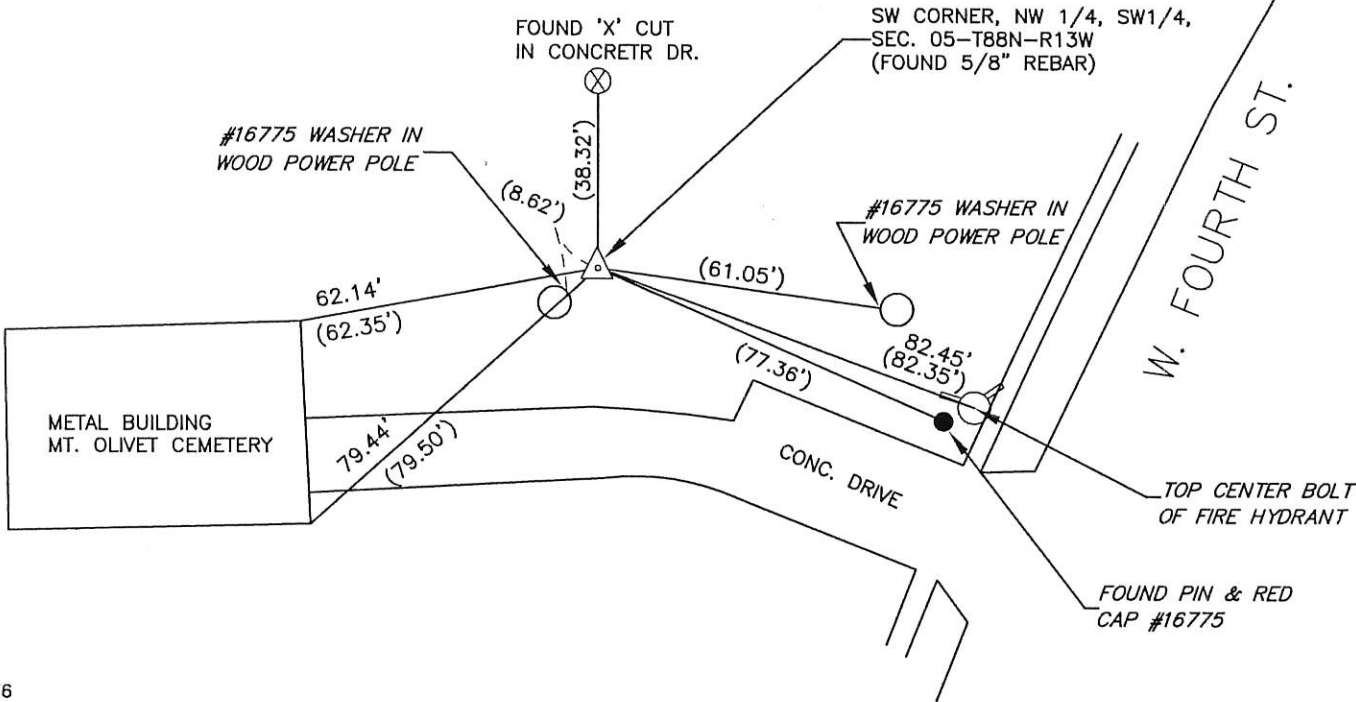
Went to location of Section corner and found 5/8" rebar as per above Section Corner Certificate.

000.00 DENOTES RECORD DIMENSION
FROM MISC. BOOK 328-561
(000.00) DENOTES FIELD DIMENSION

PLAN - VIEW



- Reason for filing certificate:
- ☐ There is no certificate on file with the Recorder's Office.
 - ☐ Accepts corner position which differs from the one shown in above document.
 - ☐ The corner monument was replaced or modified.
 - ☒ The reference ties in above document were missing.



713-76

I hereby certify that this land surveying document was prepared and the related survey work was performed by me or under my direct personal supervision and that I am a duly Licensed Land Surveyor under the laws of the State of Iowa.

Signature: David L. Scheil
David L. Scheil, L.S.
Date: JUNE 17, 2016 Lic. No. 16775

Pages or Sheets Covered by this Seal: THIS SHEET ONLY.

My license renewal date is December 31, 2016

SEAL

List Corners to be Indexed

Corners	Section	Twp	Range
SW CORNER, NW 1/4, SW1/4,	05	88 N	13 W

SE CORNER, NE 1/4, SE1/4,	06	88 N	13 W
---------------------------	----	------	------

