



Doc ID: 006837320001 Type: GEN
Recorded: 08/14/2015 at 10:18:16 AM
Fee Amt: \$7.00 Page 1 of 1
Black Hawk County Iowa
SANDIE L. SMITH RECORDER

File 2016-00003109

William W. Castle, PLS, PE, City of Waterloo Engineering Department, 715 Mulberry Street, Waterloo, Iowa 50703 Phone: (319) 291-4312

UNITED STATES PUBLIC LAND SURVEY CORNER CERTIFICATE

Land Survey Monument situated in Section 05, Township 88 North, Range 13 West,
of the Fifth Principal Meridian, Black Hawk County, Iowa.
Previously recorded in Misc. Book 293 at Page 519 in the Black Hawk County Recorder's Office.
(book, page, document number, etc.)

Monument description and remarks:

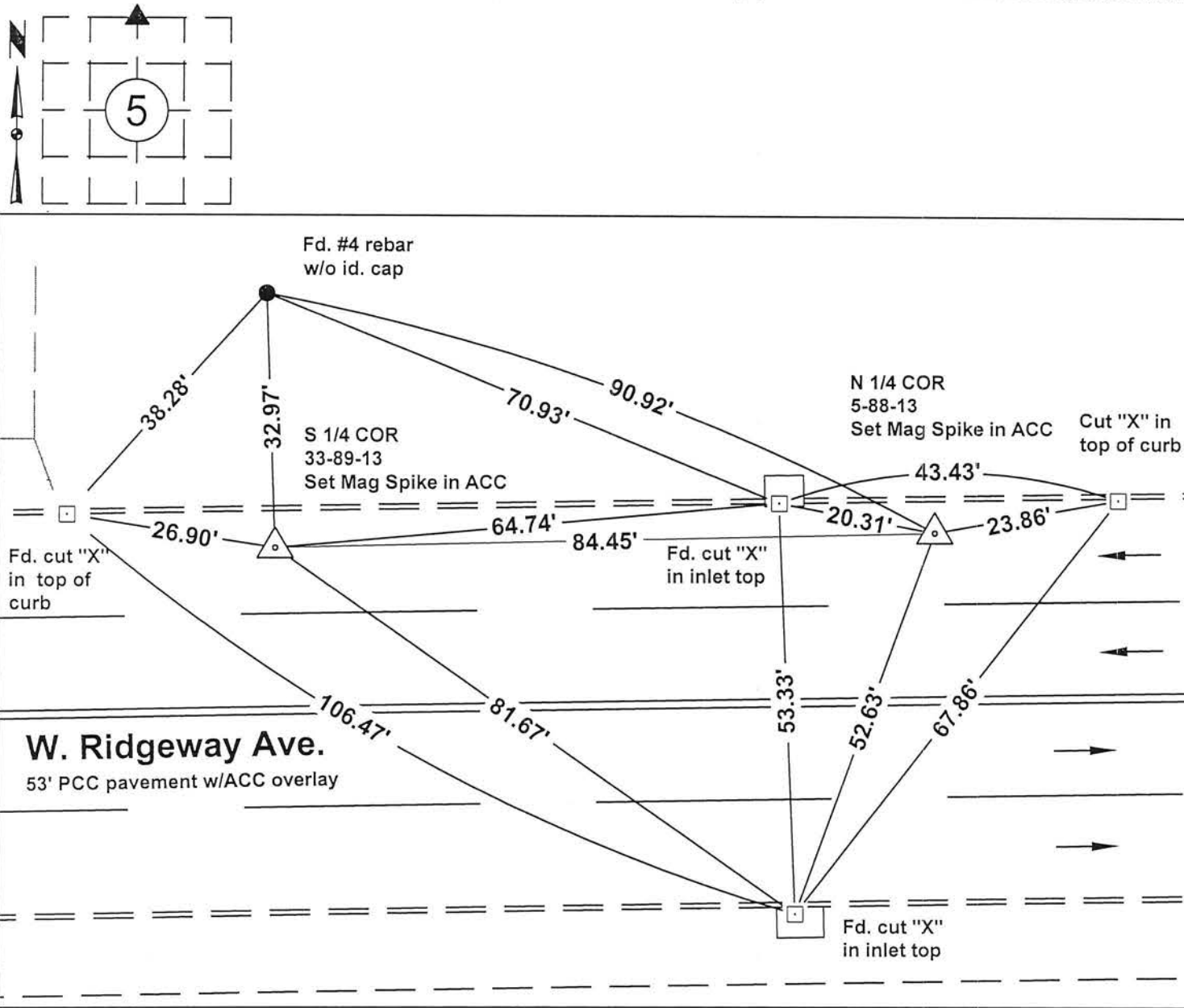
Existing monument covered with 3"+ asphalt as part of City of Waterloo FY2015 Asphalt Overlay Program, Contract No. 874.

Prior to construction, found aluminum cap in pavement per USPLSCC recorded at Misc. Book 293, Book 519. Tied out monument using total station. At that time located two of three reference monuments; cut "X" in curb northeast of corner not found.

After construction, at previously recorded location, set 3" Mag Spike in asphalt and cut new "X" in curb northeast of corner. Monument located in exterior (north) west bound traffic lane.

PLAN VIEW

Show a minimum of three reference ties to durable physical objects, relevant monuments and physical conditions that will enable recovery of the corner.



I hereby certify that this surveying document was prepared and the related survey work was performed by me or under my direct personal supervision and that I am a duly licensed Land Surveyor under the laws of the State of Iowa.

William W. Castle 7/13/2015
William W. Castle, PLS Date
License Number 19715
My License Renewal Date is December 31, 2015.
Pages or sheets covered by this seal : 1/1

List corners to be indexed			
Corners	Section	Twp	Range
N 1/4	05	88	13