

UNITED STATES PUBLIC LAND SURVEY CORNER CERTIFICATE

OF

Land Survey Monuments situated in Section 5, Township 88 NORTH, Range 13 WEST, of the Fifth Principal Meridian, BLACK HAWK County, Iowa.
 Previously recorded in DOES NOT APPLY (book, page, document number, etc.) in County Recorder's Office.

(Show reason for preparing this certificate, the evidence and detailed procedures used in establishing the corner positions and monumentation found or placed.)

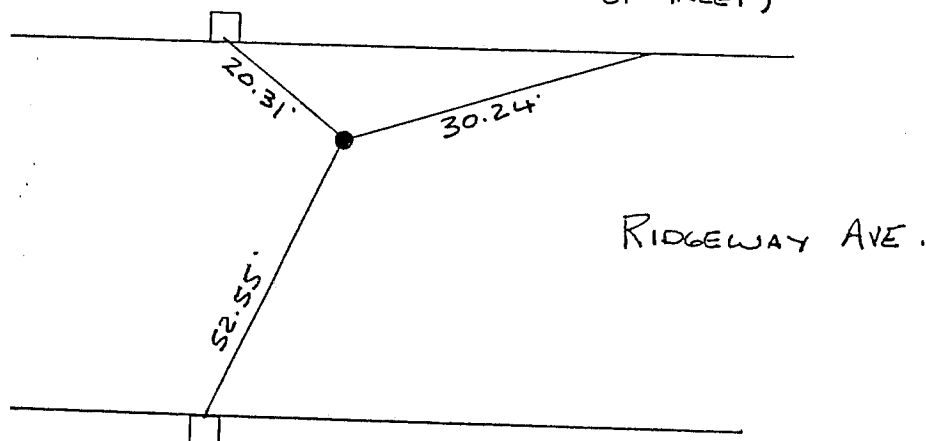
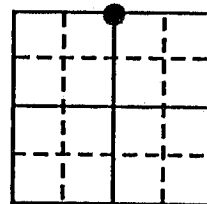
Monument Description and Remarks: ALUMINUM CAP ATTACHED TO 5" X 30"
IRON BAR EPOXIED IN CONCRETE OF NORTHERLY - WEST BOUND
LANE OF RIDGEWAY AVENUE. MARKED N. COR. 5

PLAN - VIEW

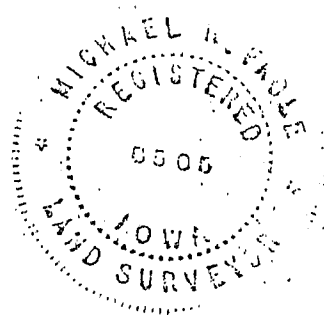
(Show a minimum of three reference ties to durable physical objects, relevant monuments and physical conditions that will enable recovery of the corner.)

'X' CUT TOP INLET
AT BACK OF CURB

'X' CUT TOP
CURB (50' EAST
OF INLET)



'X' CUT TOP INLET
AT BACK OF CURB



I hereby certify that the survey work was completed and this certificate was prepared by me or under my direct personal supervision and that I am a duly registered land surveyor under the laws of the state of Iowa.

Signature: Michael R Fagle
 Name typed or printed: MICHAEL R. FAGLE

Date: 11-30-90 Reg. No. 8505

Corners

List Corners to be Indexed

Section

Twp

Range

N 1/4

S

88 NORTH

13 WEST

