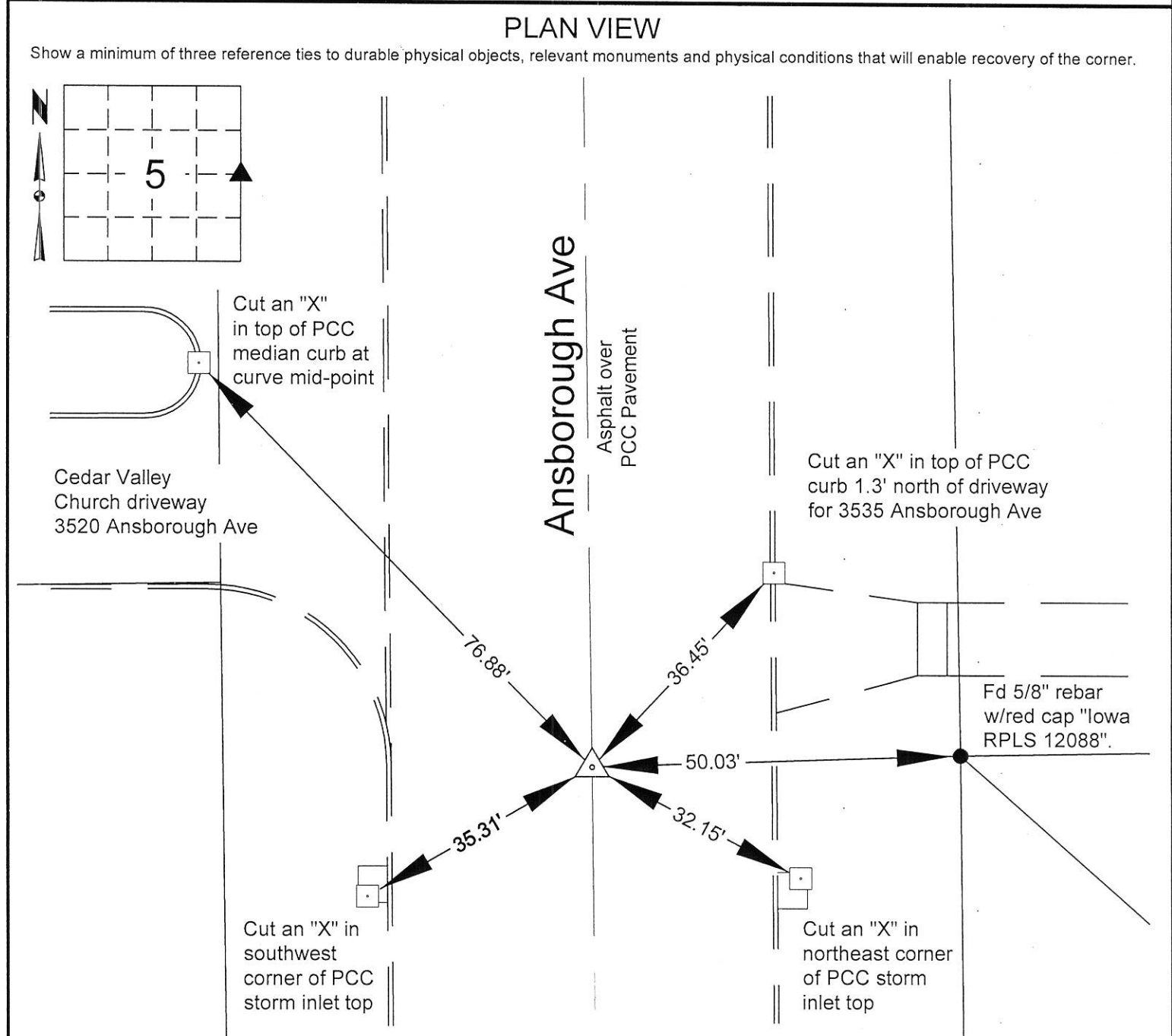
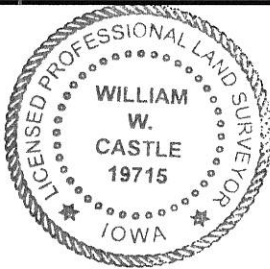


Index Legend	
County:	Black Hawk
Section(s):	5 Township: 88 N Range: 13 W
Corner(s):	East 1/4 Corner
Requestor:	City of Waterloo
Proprietor:	City of Waterloo
Surveyor:	William W. Castle
Surveyor Company:	City of Waterloo Engineering Department 715 Mulberry Street, Waterloo, IA 50703
Return To:	715 Mulberry St, Waterloo, IA 50703 291-4312


Doc ID: 009697260001 Type: GEN
Recorded: 11/06/2019 at 03:45:57 PM
Fee Amt: \$7.00 Page 1 of 1
Black Hawk County Iowa
SANDIE L. SMITH RECORDER
File **2020-00008448**

United States Public Land Survey Corner Certificate
Land Survey Monument situated in Section 05, Township 88 North, Range 13 West, of the Fifth Principal Meridian, Black Hawk County, Iowa.
Previously recorded in no certificate currently on file in the Black Hawk County Recorder's Office.
Reason for preparing this certificate, the evidence and detailed procedures used in establishing the corner position, and monumentation found or placed.
Existing pavement overlain with 3" of asphalt as part of City of Waterloo FY2019 Asphalt Overlay Program, Contract No. 964. Prior to construction, found 3" aluminum disc in concrete pavement placed as part of the Ansborough Avenue reconstruction project, contract no. 362. After construction, set 3" mag spike at corner using project controls.



	I hereby certify that this surveying document was prepared and the related survey work was performed by me or under my direct personal supervision and that I am a duly licensed Land Surveyor under the laws of the State of Iowa. <i>William W. Castle</i> 11/4/19 William W. Castle, PLS Date License Number 19715 My License Renewal Date is December 31, 2019. 1/1 Pages or sheets covered by this seal:	List corners to be indexed		
		Corners	Section	Twp
City of Waterloo Engineering Department 715 Mulberry Street, Waterloo, Iowa 50703 Phone: (319) 291-4312 Fax: (319) 291-4262		Drawn By: WWC Scale: none Field Work Date: 7/29/19 & 10/23/19 Date Drawn: 10-24-2019	Sheet No. 1 of 1	