



Doc ID: 009914650001 Type: GEN  
Recorded: 08/10/2020 at 12:33:29 PM  
Fee Amt: \$7.00 Page 1 of 1  
Black Hawk County Iowa  
SANDIE L. SMITH RECORDER

File 2021-00003015

Enx

WAYNE CLAASSEN ENGINEERING AND SURVEYING, INC.  
P.O. BOX 898 WATERLOO, IOWA 50704-0898

PHONE: (VOICE) 319-235-6294  
(FAX) 319-235-0028

## UNITED STATES PUBLIC LAND SURVEY CORNER CERTIFICATE

Land Survey Monuments situated in Section 02, Township 88 North, Range 13 West, of the Fifth Principal Meridian, Black Hawk County, Iowa.

Previously recorded in \_\_\_\_\_ in County Recorder's Office.  
(book, page, document number, etc.)

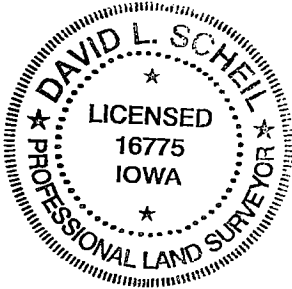
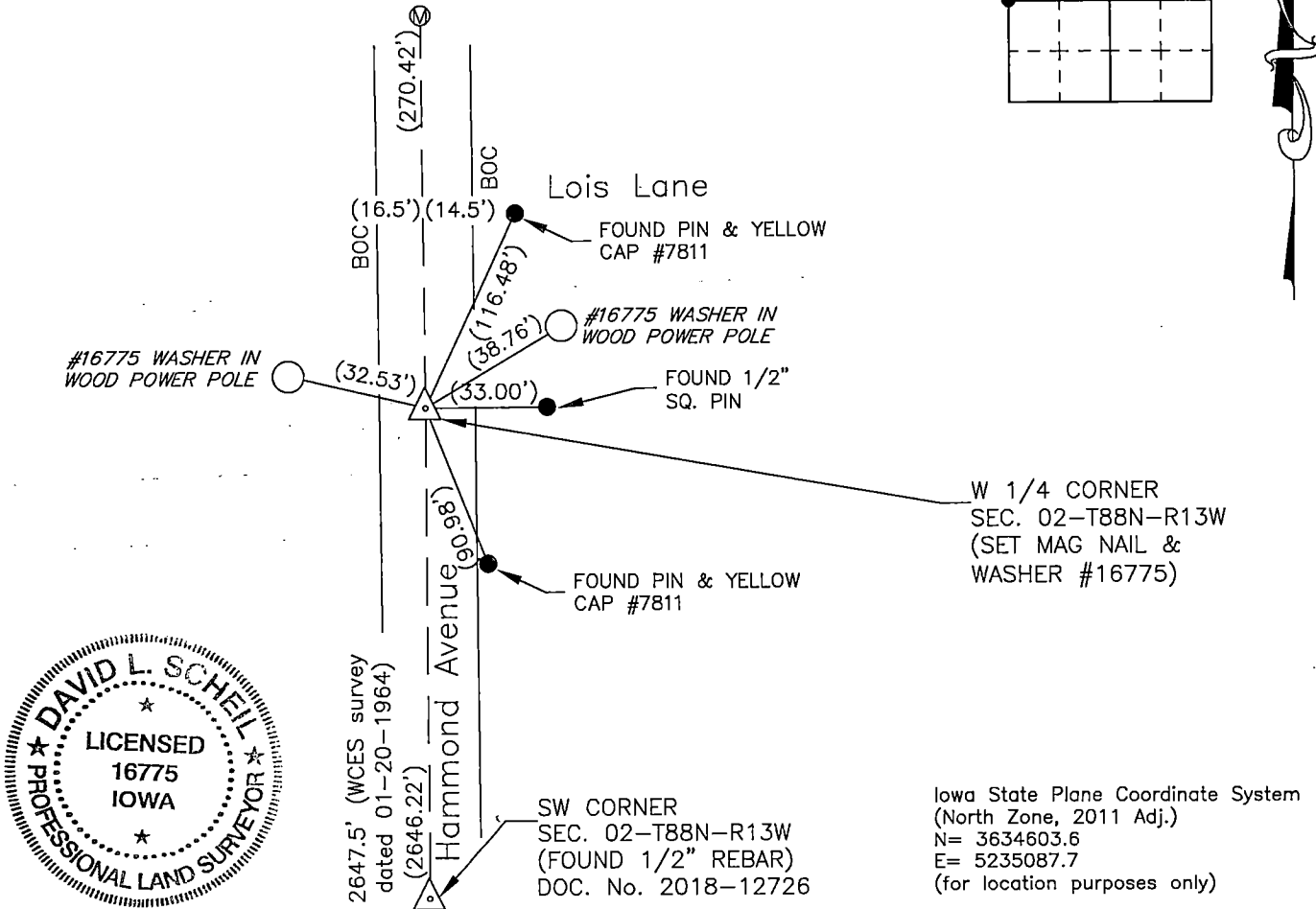
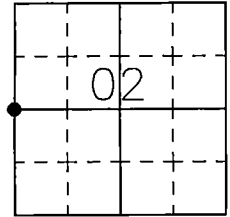
### Monument Description and Remarks

WPA notes from the Black Hawk County Recorder's Office state the following: "At location indicated by random line dug hole 4' sq 18" deep found limestone 11"x10"x5" iron bar 1/2"x22" wood stake 10"x2"x1". Lowered all evidence in place and set C.M. on top. with cap." Notes dated Oct. 24, 1940. Corner Stone Survey for Black Hawk County Interstate No. U-218-7(12)--40-07 & F-FG-520-6(2)--24-37, signed by Marion Miller, R.L.S. No. 3950, signed 09-05-1968, show a found S.C.M. Plat of Survey in Doc. 2019-13348 by Kyle Helland P.L.S. No. 23212 has "approximate W 1/4 corner Sec. 2-T88N-R13W calculated point nothing found or set. set mag nail & Washer #16775 using above survey, WCES survey dated 01-20-1964 and South Ridge terrace Second Addition.

### PLAN - VIEW

Reason for filing certificate:

- ☒ There is no certificate on file with the Recorder's Office.
- ☐ Accepts corner position which differs from the one shown in above document.
- ☐ The corner monument was replaced or modified.
- ☐ The reference ties in above document were incorrect or missing.



Iowa State Plane Coordinate System  
(North Zone, 2011 Adj.)  
N= 3634603.6  
E= 5235087.7  
(for location purposes only)

764-04

I hereby certify that this land surveying document was prepared and the related survey work was performed by me or under my direct personal supervision and that I am a duly Licensed Land Surveyor under the laws of the State of Iowa.

Signature: David L. Scheil  
David L. Scheil, L.S.

Date: August 06, 2020 Lic. No. 16775

Pages or Sheets Covered by this Seal: THIS SHEET ONLY.

My license renewal date is December 31, 2020

SEAL

### List Corners to be Indexed

Corners	Section	Twp	Range
W 1/4 CORNER,	02	88 N	13 W
E 1/4 CORNER,	03	88 N	13 W