



Doc ID: 007520000001 Type: GEN  
Recorded: 12/23/2016 at 10:41:39 AM  
Fee Amt: \$7.00 Page 1 of 1  
Black Hawk County Iowa  
SANDIE L. SMITH RECORDER

File 2017-00011696

\* VJ Engineering  
env

United States Public Land Survey Corner Certificate of

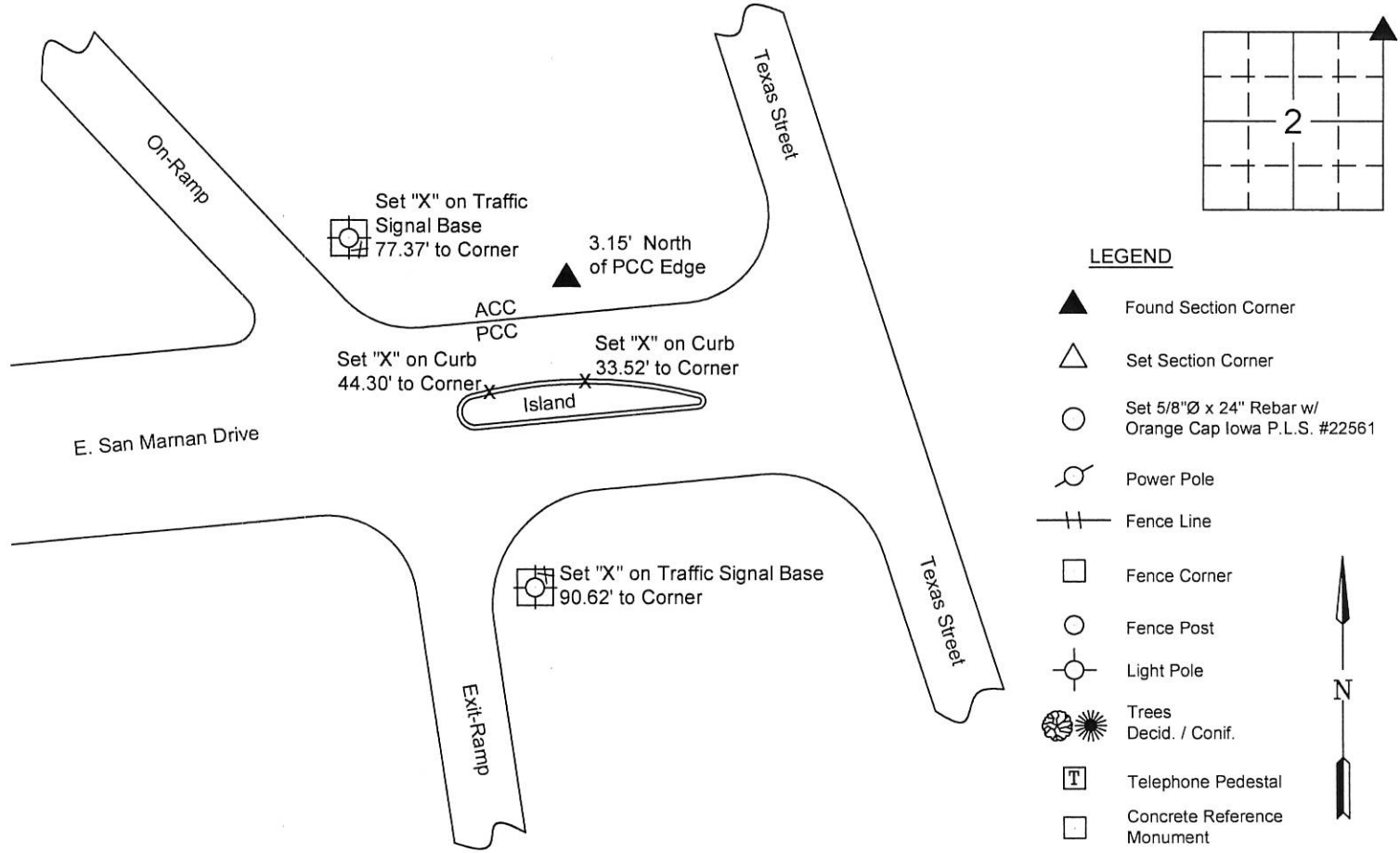
Land Survey Monuments situated in Section No. 2, Township No. 88 North, Range No. 13 West, of the Fifth Principal Meridian, Black Hawk County, Iowa  
Previously recorded in N/A

Show reason for preparing this certificate, the evidence and detailed procedures used in establishing the corner positions and monumentation found or placed.)

Monument Description and Remarks: Northeast Corner, Section 2-T88N-R13W  
Corner Stone Survey by IDOT for project No. I-380-7-(33)--01-07 dated 8-7-1979 indicates that a Iron Pin was set over a concrete monument.  
Previous ties from corner stone survey have been obliterated. The City of Waterloo Eng. Dept. had information indicating that the corner was monumented with a 1/2"Ø Rebar, searched area with locator and found 1/2"Ø Rebar flush in North asphalt shoulder of E. San Marnan Drive.  
Accepted 1/2"Ø Rebar as the corner.  
Corner was used for a survey in the NE 1/4 of Section 2-T88N-R13W.  
This corner certificate is being prepared because there is no previous corner certificate recorded.

PLAN - VIEW

(Show a minimum of three reference ties to durable physical objects, relevant monuments and physical conditions that will enable recovery of the corner.)



I hereby certify that this land surveying document was prepared and the related survey work was performed by me or under my direct personal supervision and that I am a duly licensed Land Surveyor under the laws of the State of Iowa.

Matthew A. Kofta, P.L.S. 12-20-16 Date

License Number 22561

My license renewal date is December 31, 2018

Pages or sheets covered by this seal: 1

List Corner to be Indexed

Corner	Section	Twp	Range
Northeast Corner	2	88 North	13 West



VJ Engineering  
1501 Technology Parkway  
Cedar Falls, Iowa - 319-266-5829

Section Corner  
Reference Ties

file no. 168068  
drawn by MAK  
date 12/20/16