

*
env VJ Engineering

United States Public Land Survey Corner Certificate of

Land Survey Monuments situated in Section No. 2, Township No. 88 North,
Range No. 13 West, of the Fifth Principal Meridian, Black Hawk County, Iowa
Previously recorded in Fee Book 2006 25942 & 338 MISC 123

Show reason for preparing this certificate, the evidence and detailed procedures used in establishing the corner positions and monumentation found or placed.)

Monument Description and Remarks: North Quarter Corner, Section 2-T88N-R13W

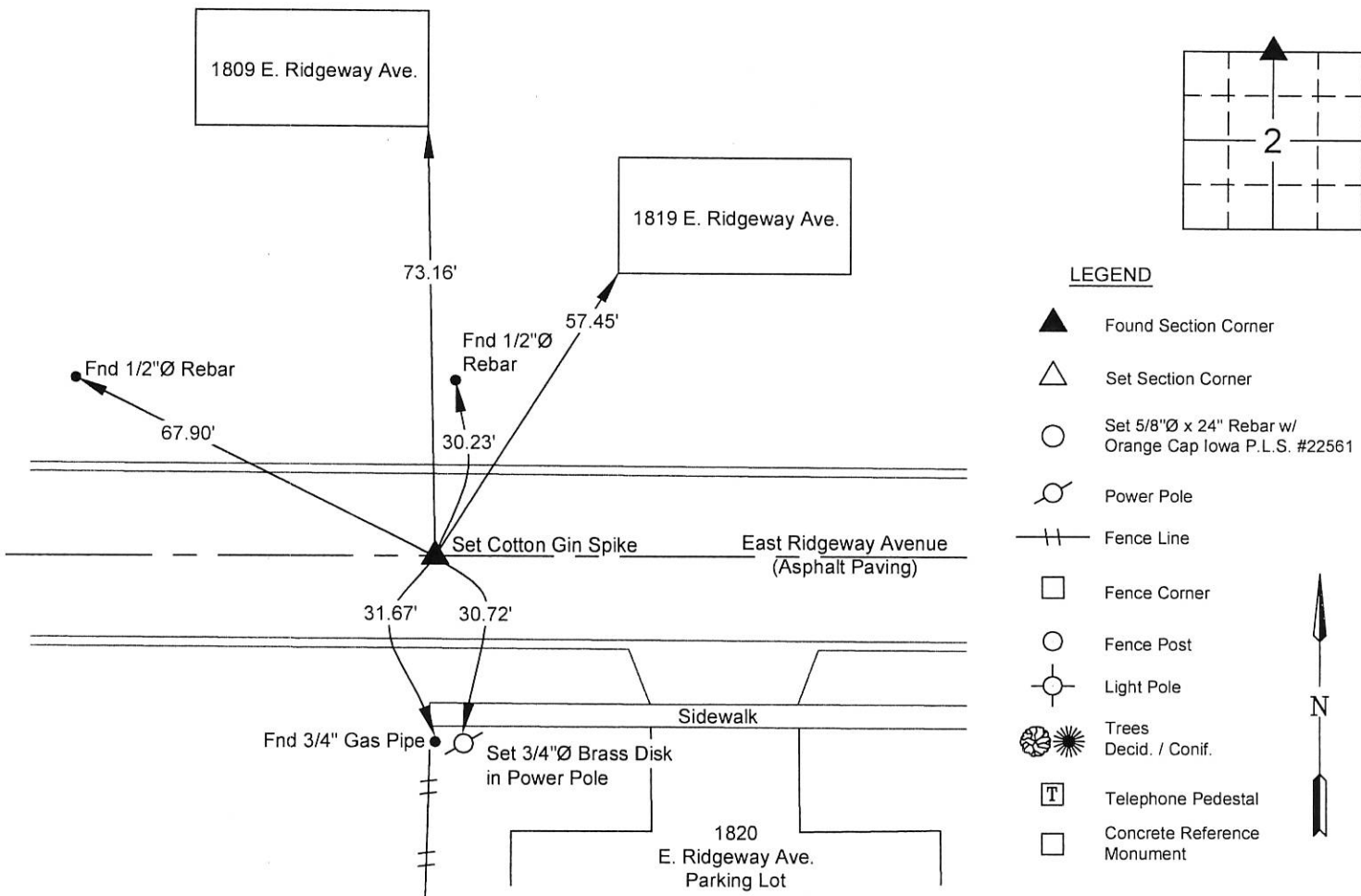
Previous monumentation has been obliterated by the reconstruction of E. Ridgeway Ave., used remaining reference ties to set a Cotton Gin Spike in the asphalt paving.

Corner was used for a survey in the NE 1/4 of Section 2-T88N-R13W.

This corner certificate is being prepared because the monumentation and reference ties have changed.

PLAN - VIEW

(Show a minimum of three reference ties to durable physical objects, relevant monuments and physical conditions that will enable recovery of the corner.)



I hereby certify that this land surveying document was prepared and the related survey work was performed by me or under my direct personal supervision and that I am a duly licensed Land Surveyor under the laws of the State of Iowa.

Matthew A. Kofta 12-20-16
Matthew A. Kofta, P.L.S. Date
License Number 22561
My license renewal date is December 31, 2016
Pages or sheets covered by this seal: 1

List Corner to be Indexed

| Corner | Section | Twp | Range |
|----------------------|---------|----------|---------|
| North Quarter Corner | 2 | 88 North | 13 West |



VJ Engineering
1501 Technology Parkway
Cedar Falls, Iowa - 319-266-5829

Section Corner
Reference Ties

file no.
168068
drawn by
MAK
date
9/22/16

(7.00)