

KIRKHAM MICHAEL CONSULTING ENGINEERS 11021 AURORA AVE URBANDALE IA 50322

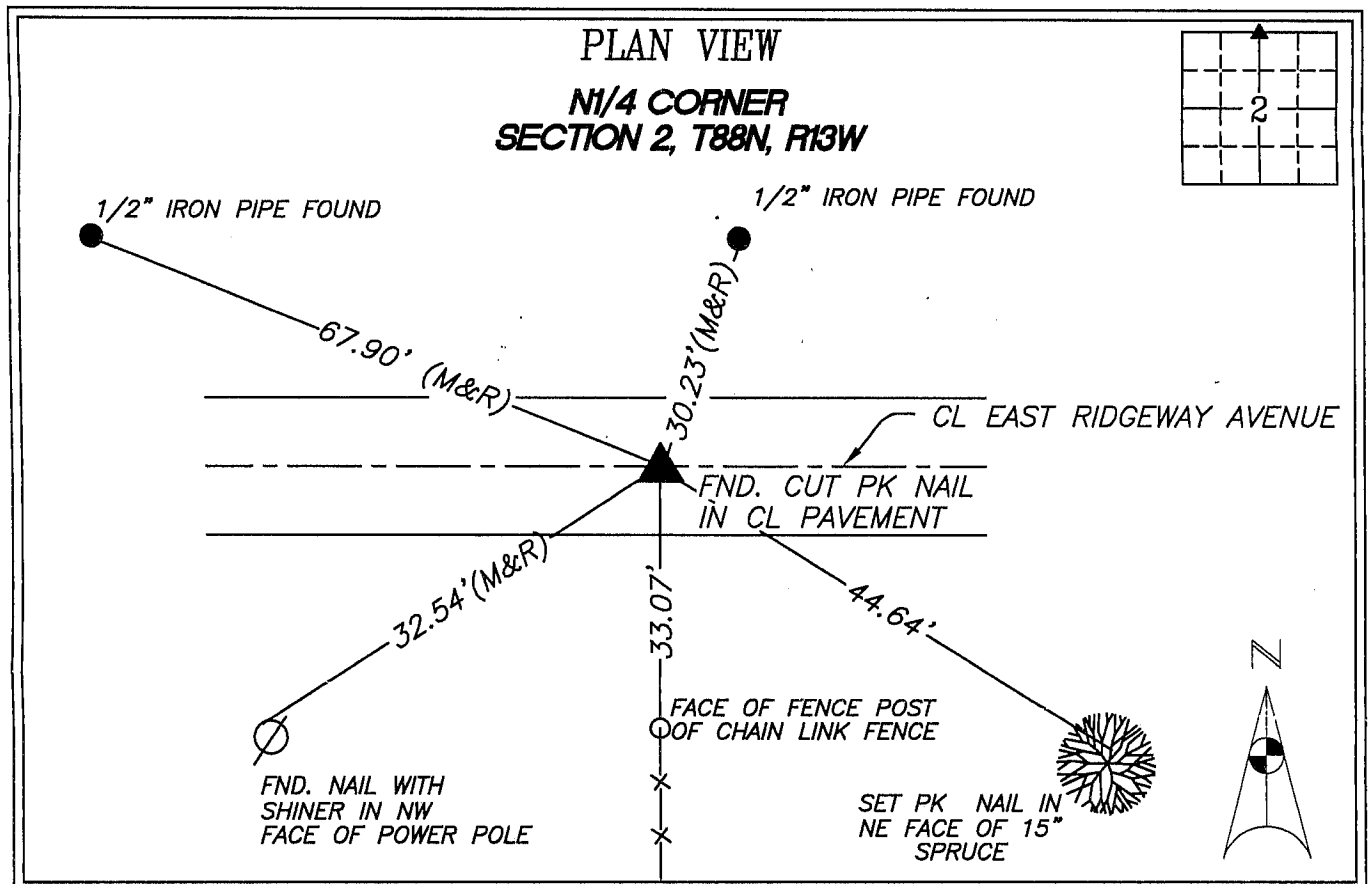
JEFFREY S. HALL, KIRKHAM MICHAEL 11021 AURORA AVENUE URBANDALE IOWA 50322 PHONE 515-270-0848

UNITED STATES PUBLIC LAND SURVEY CORNER CERTIFICATE
OF

Land Survey Monuments situated in Section 2, Township 88 North, Range 13
West of the Fifth Principal Meridian, BLACKHAWK County, Iowa.
Previously recorded in Bk. 338 of Misc Pg. 123 in the County Recorder's Office.

Monument Description and Remarks:

FOUND PK NAIL IN CL PAVEMENT AS SHOWN IN RECORDED SECTION CORNER TIES.
EXISTING FIELD CONDITIONS HAVE CHANGED SINCE RECORDED TIES WERE PREPARED. THIS
CORNER WAS UTILIZED DURING A SURVEY IN THE NW1/4 NE1/4



I HEREBY CERTIFY THAT THIS LAND SURVEYING DOCUMENT
WAS PREPARED AND THE RELATED SURVEY WORK WAS
PERFORMED BY ME OR UNDER MY DIRECT PERSONAL
SUPERVISION AND THAT I AM A DULY LICENSED LAND
SURVEYOR UNDER THE LAWS OF THE STATE OF IOWA.

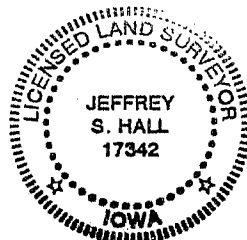
Jeffrey S. Hall
JEFFREY S. HALL

4/25/06
DATE:

IOWA LICENSE NUMBER: 17342

My license renewal date is December 31, 2006.

PAGES OR SHEETS COVERED BY THIS SEAL: 1 OF 1



LIST CORNERS TO BE INDEXED
Corners Section Township Range
NORTH QUARTER 2 88 13
CORNER