

UNITED STATES PUBLIC LAND SURVEY CORNER CERTIFICATE
OF

Land Survey Monuments situated in Section 2, Township 88 N, Range 13 W, of the Fifth Principal Meridian, Black Hawk County, Iowa
Previously recorded in Book MISC 338, Page 123.

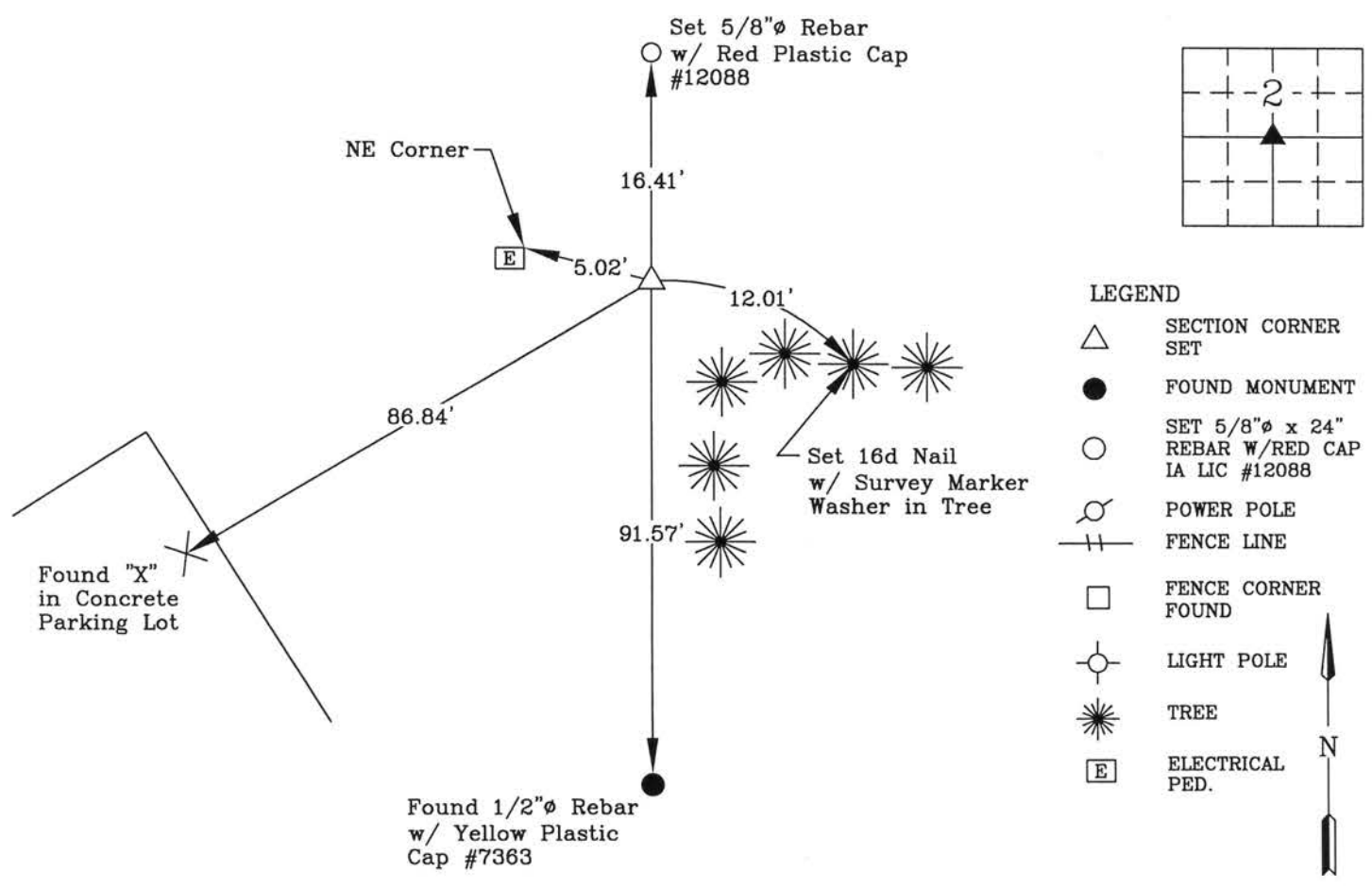
Show reason for preparing this certificate, the evidence and detailed procedures used in establishing the corner positions and monumentation found or placed.)

Monument Description and Remarks: Corner was used for a survey in the E 1/2 of 2-88-13.

Corner Certificate 338 MISC 123 calls for a 1/2"Ø Rebar with Cap L.S. #7811. Searched area with metal locator and did not find monument. Established location from record ties and Recorded plat information. Set 5/8"Ø Rebar with 1 1/2"Ø Aluminum Cap L.S. #12088.

PLAN - VIEW

(Show a minimum of three reference ties to durable physical objects, relevant monuments and physical conditions recovery of the corner.)



I hereby certify that this land surveying document was prepared and the related survey work was performed by me or under my direct personal supervision and that I am a duly licensed Land Surveyor under the laws of the State of Iowa.



Wendell J. Lupkes 6-14-13
WENDELL J. LUPKES, L.S. DATE
License number 12088
My license renewal date is December 31, 2014
Pages or sheets covered by this seal: 1

List Corner to be Indexed

Corner Center	Section	Twp	Range
	2	88 N	13 W



VJ Engineering
1501 Technology Parkway
Cedar Falls, Iowa - 319-266-5829

SECTION CORNER
REFERENCE TIES

scale NONE
drawn by MAK
date 6/7/13