



Doc ID: 011838730001 Type: GEN  
Recorded: 09/26/2022 at 12:05:08 PM  
Fee Amt: \$7.00 Page 1 of 1  
Black Hawk County Iowa  
SANDIE L. SMITH RECORDER

File **2023-00005154**

EW

WAYNE CLAASSEN ENGINEERING AND SURVEYING, INC.  
P.O. BOX 898 WATERLOO, IOWA 50704-0898

PHONE: (VOICE) 319-235-6294  
(FAX) 319-235-0028

**UNITED STATES PUBLIC LAND SURVEY CORNER CERTIFICATE**

Land Survey Monuments situated in Section 01, Township 88 North, Range 13 West, of the Fifth Principal Meridian, Black Hawk County, Iowa.

Previously recorded in Misc. Book 307, Page 318 in County Recorder's Office.  
(book, page, document number, etc.)

**Monument Description and Remarks**

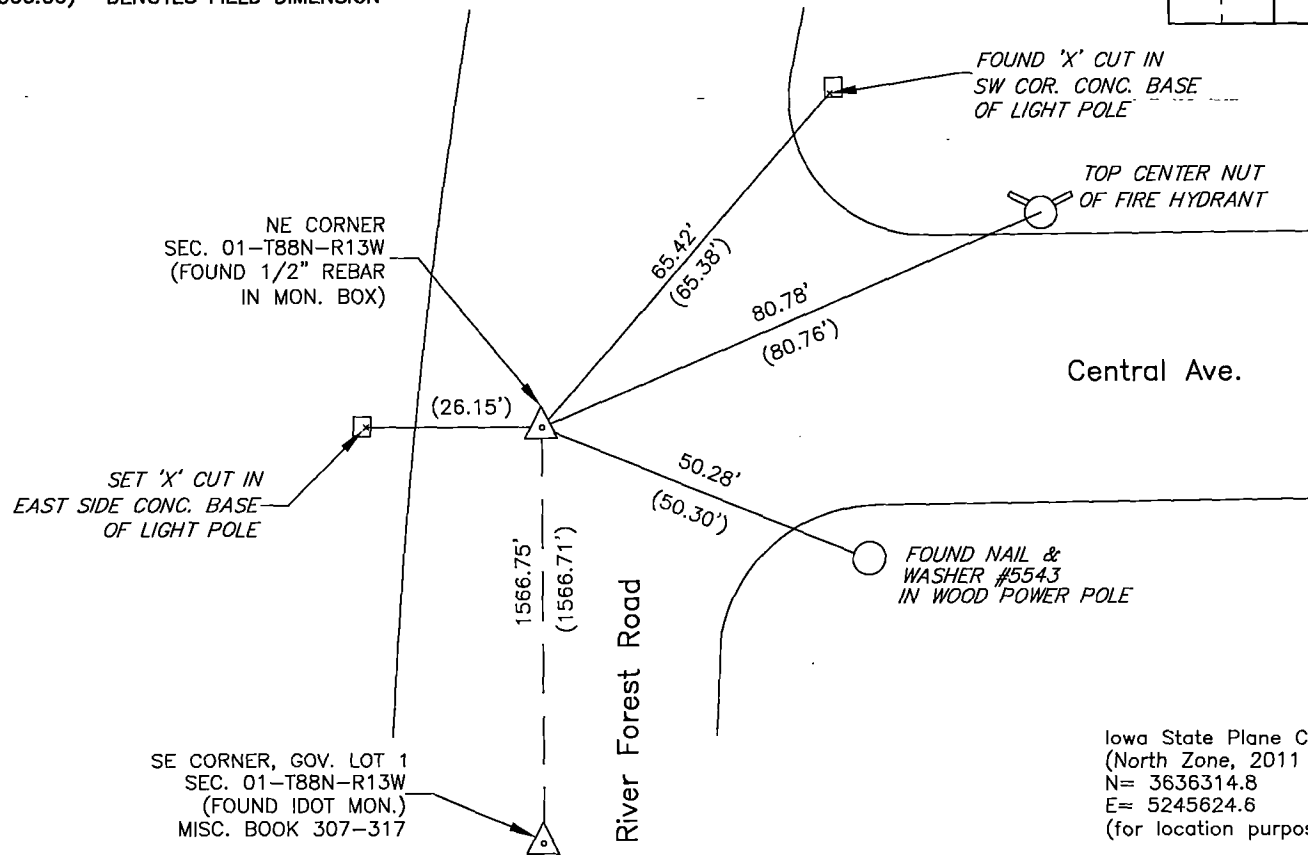
Went to location of corner and found 1/2" rebar inside monument box instead of pk nail as per above reference.  
Accepted 1/2" rebar because it reasonably matched ties from above record.

**PLAN - VIEW**

- Reason for filing certificate:
- ☐ There is no certificate on file with the Recorder's Office.
  - ☐ Accepts corner position which differs from the one shown in above document.
  - ☒ The corner monument was replaced or modified.
  - ☐ The reference ties in above document were incorrect or missing.

000.00 DENOTES RECORD DIMENSION FROM  
MISC. BOOK 307-318

(000.00) DENOTES FIELD DIMENSION



Iowa State Plane Coordinate System  
(North Zone, 2011 Adj.)  
N= 3636314.8  
E= 5245624.6  
(for location purposes only)

I hereby certify that this land surveying document was prepared and the related survey work was performed by me or under my direct personal supervision and that I am a duly Licensed Land Surveyor under the laws of the State of Iowa.

Signature: David L. Scheil  
David L. Scheil, L.S.

Date: SEPT. 21, 2022 Lic. No. 16775

Pages or Sheets Covered by this Seal: THIS SHEET ONLY.

My license renewal date is December 31, 2022

SEAL

**List Corners to be Indexed**

Corners	Section	Twp	Range
NE CORNER,	01	88 N	13 W
NW CORNER,	06	88 N	12 W



✓ 19.00 GP

(7)

1