

UNITED STATES PUBLIC LAND SURVEY CORNER CERTIFICATE

OF

Land Survey Monuments situated in Section 1, Township 88N, Range 13W, of the Fifth Principal Meridian, \_\_\_\_\_ County, Iowa.  
Previously recorded in N/A in County Recorder's Office.  
(book, page, document number, etc.)

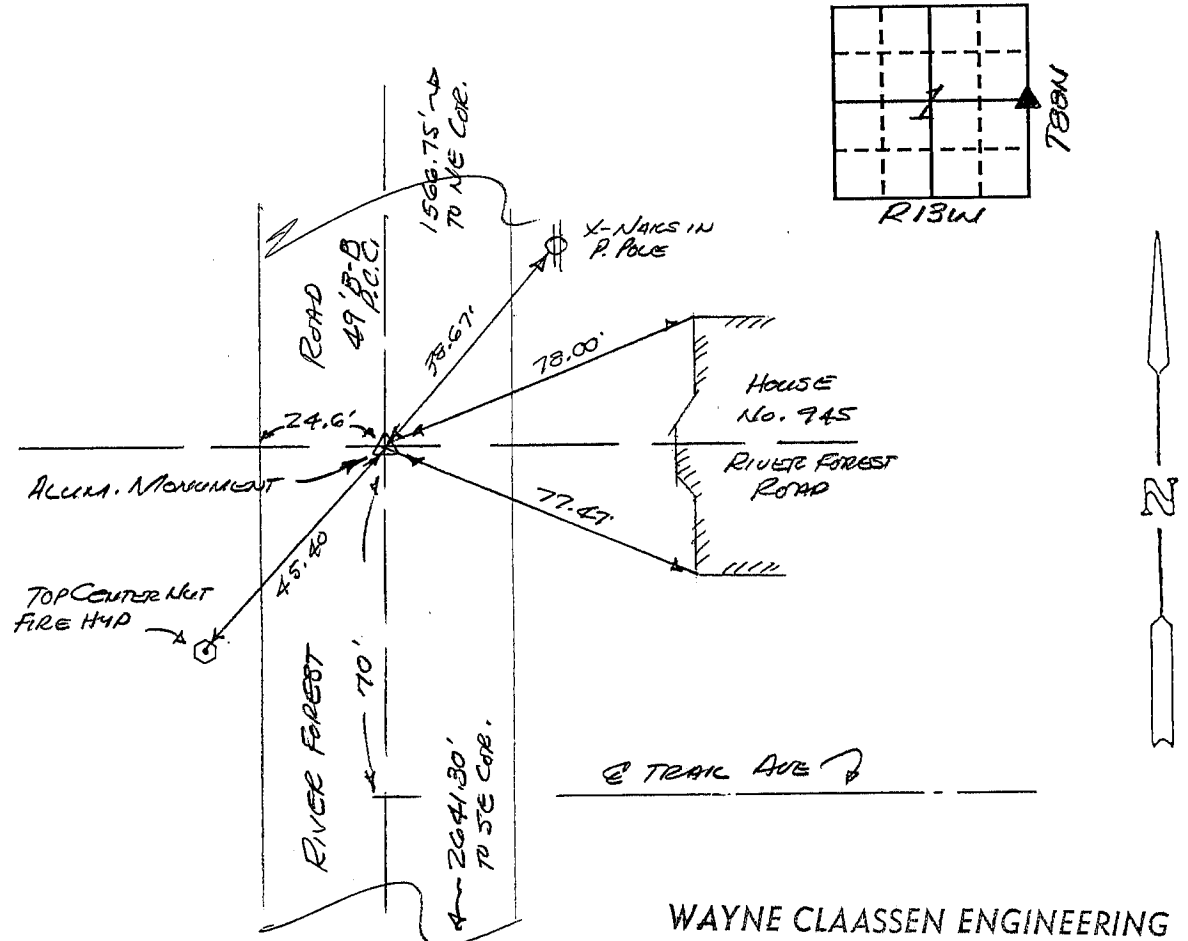
(Show reason for preparing this certificate, the evidence and detailed procedures used in establishing the corner positions and monumentation found or placed.)

Monument Description and Remarks: FOUND I.D.O.T. ALUMINUM MONUMENT IN E 49'

P.C. CONC. PAVING.

PLAN - VIEW

(Show a minimum of three reference ties to durable physical objects, relevant monuments and physical conditions that will enable recovery of the corner.)



WAYNE CLAASSEN ENGINEERING  
AND SURVEYING, INC.  
2709 UNIVERSITY AVE.  
P.O. BOX 898  
WATERLOO, IA 50704

399-5

I hereby certify that the survey work was completed and this certificate was prepared by me or under my direct personal supervision and that I am a duly registered land surveyor under the laws of the state of Iowa.

Signature: F. William King  
Name typed or printed: F. WILLIAM KING  
Date: 7-21-1993 Reg. No. 8033

Corners	List Corners to be Indexed	Section	Twp	Range
E 1/4	1	88N	13W	

SEAL



MISC. BK 307 p. 320