

114
P
Z

Document Number: 2009007732
Date: Oct 14, 2008 1:22:51 pm
Aud Fee: 0.00 Rec Fee: 5.00
Trans Tax: 0.00 Rec Management Fee: 1.00
E-Com Fee: 1.00 Non-Standard Page Fee: 0.00
Filed for record in Black Hawk County, Iowa
Judith A. McCarthy, County Recorder

Paul H. Helland, 1107 Technology Parkway, Cedar Falls, Iowa 50613-6951, (319)-266-0161

UNITED STATES PUBLIC LAND SURVEY CORNER CERTIFICATE
OF

LAND SURVEY MONUMENTS SITUATED IN SECTION NO. 36, TOWNSHIP NO. 88 NORTH, RANGE NO. 12 WEST OF THE FIFTH PRINCIPAL MERIDIAN, BLACK HAWK COUNTY, IOWA.
PREVIOUSLY RECORDED IN N/A

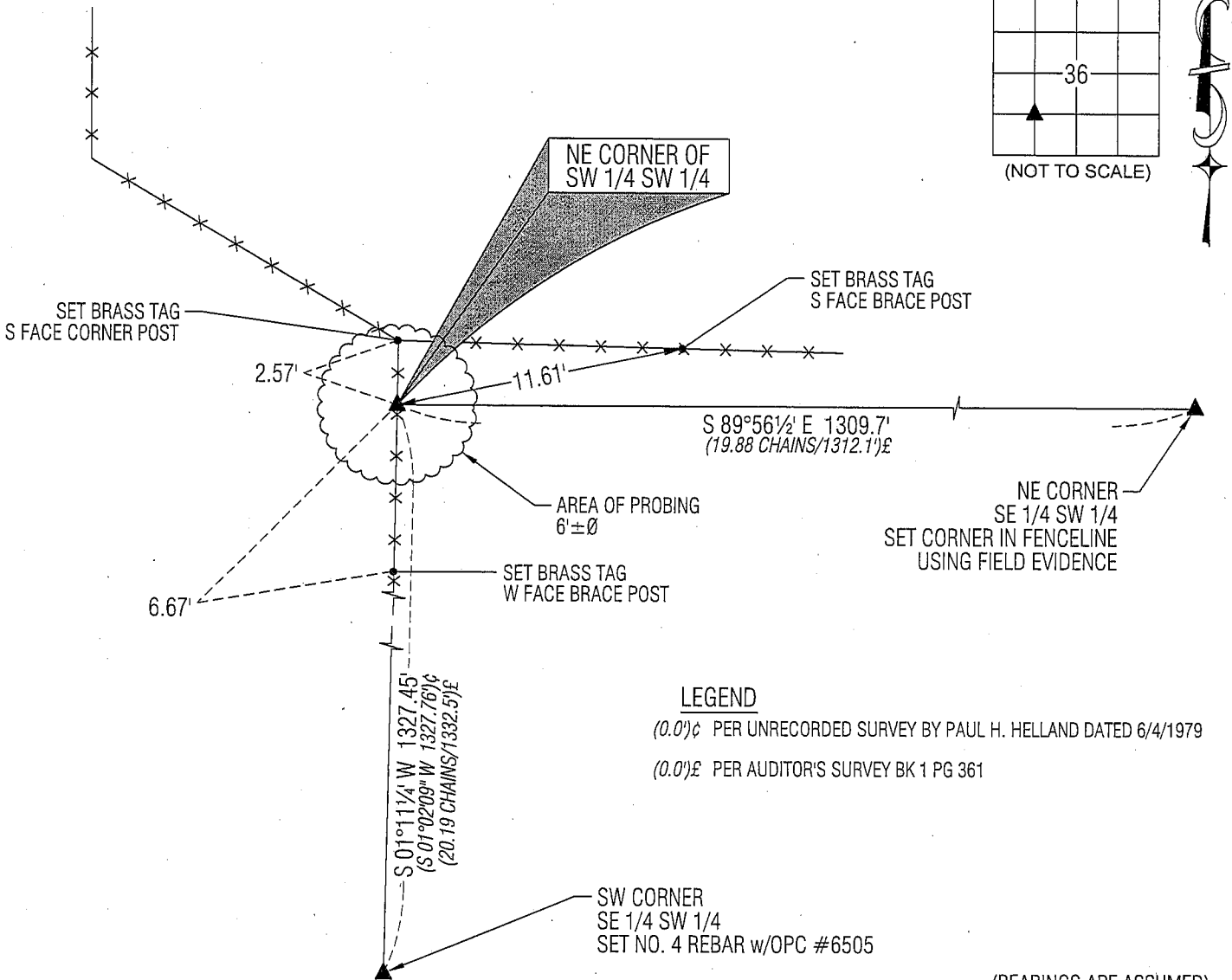
(SHOW REASON FOR PREPARING THIS CERTIFICATE, THE EVIDENCE AND DETAILED PROCEDURES USED IN ESTABLISHING THE CORNER POSITIONS AND MONUMENTATION FOUND OR PLACED.)

MONUMENT DESCRIPTION AND REMARKS:
NO USPLSCC ON FILE. SURVEY COMPLETED IN THE SE 1/4 OF THE SW 1/4 OF SEC. 36-T88N-R12W.

NE CORNER SW 1/4 SW 1/4: AUDITOR'S SURVEY BK 1 PG 361 DATED 2/12/1869 CALLS FOR [STONE]. UNRECORDED PLAT OF SURVEY BY PAUL H. HELLAND CALLS FOR [FO. COR. POST SET IRON PIN]. NO BLACK HAWK COUNTY ENGINEER REFERENCE TIES AVAILABLE. FOUND NO. 4 REBAR (0.2' EXPOSED). PROBED 6'±Ø CIRCLE AROUND SAID NO. 4 REBAR SEARCHING FOR STONE, FOUND NOTHING. SAID NO. 4 REBAR CORRESPONDS WITHIN REASON TO SAID UNRECORDED PLAT OF SURVEY BY PAUL H. HELLAND. UTILIZED SAID NO. 4 REBAR AS CORNER.

PLAN VIEW

(SHOW A MINIMUM OF THREE REFERENCE TIES TO DURABLE PHYSICAL OBJECTS, RELEVANT MONUMENTS AND PHYSICAL CONDITIONS THAT WILL ENABLE RECOVERY OF THE CORNER.)



LEGEND

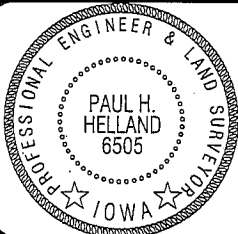
(0.0')C PER UNRECORDED SURVEY BY PAUL H. HELLAND DATED 6/4/1979
(0.0')E PER AUDITOR'S SURVEY BK 1 PG 361

(BEARINGS ARE ASSUMED)



HELLAND ENGINEERING & SURVEYING, LTD.
1107 Technology Parkway
Cedar Falls, Iowa 50613-6951
(319)-266-0161

SHINER = 8D NAIL & 1 5/16"Ø METAL SHINER
BRASS TAG = 13/16"Ø BRASS TAG
OPC = PLASTIC CAP (O=ORANGE, R=RED, Y=YELLOW)
(00') RECORDED AS FILE NAME: 08-280C4.DWG



I hereby certify that this land surveying document was prepared and the related survey work was performed by me or under my direct personal supervision and that I am a duly licensed Land Surveyor under the laws of the State of Iowa.
Paul H. Helland
License Number 6505
My license renewal date is December 31, 2009.
All pages or sheets are covered by this seal except:

LIST CORNERS TO BE INDEXED

CORNER	SECTION	TOWNSHIP	RANGE
NE COR. SW 1/4 SW 1/4	36	88N	12W
SE COR. NW 1/4 SW 1/4	36	88N	12W
SW COR. NE 1/4 SW 1/4	36	88N	12W
NW COR. SE 1/4 SW 1/4	36	88N	12W

Rec