

UNITED STATES PUBLIC LAND SURVEY CORNER CERTIFICATE

OF

Land Survey Monuments situated in Section 36, Township 88N, Range 12W, of the Fifth Principal Meridian, BLACK HAWK County, Iowa. Previously recorded in U/A in County Recorder's Office.

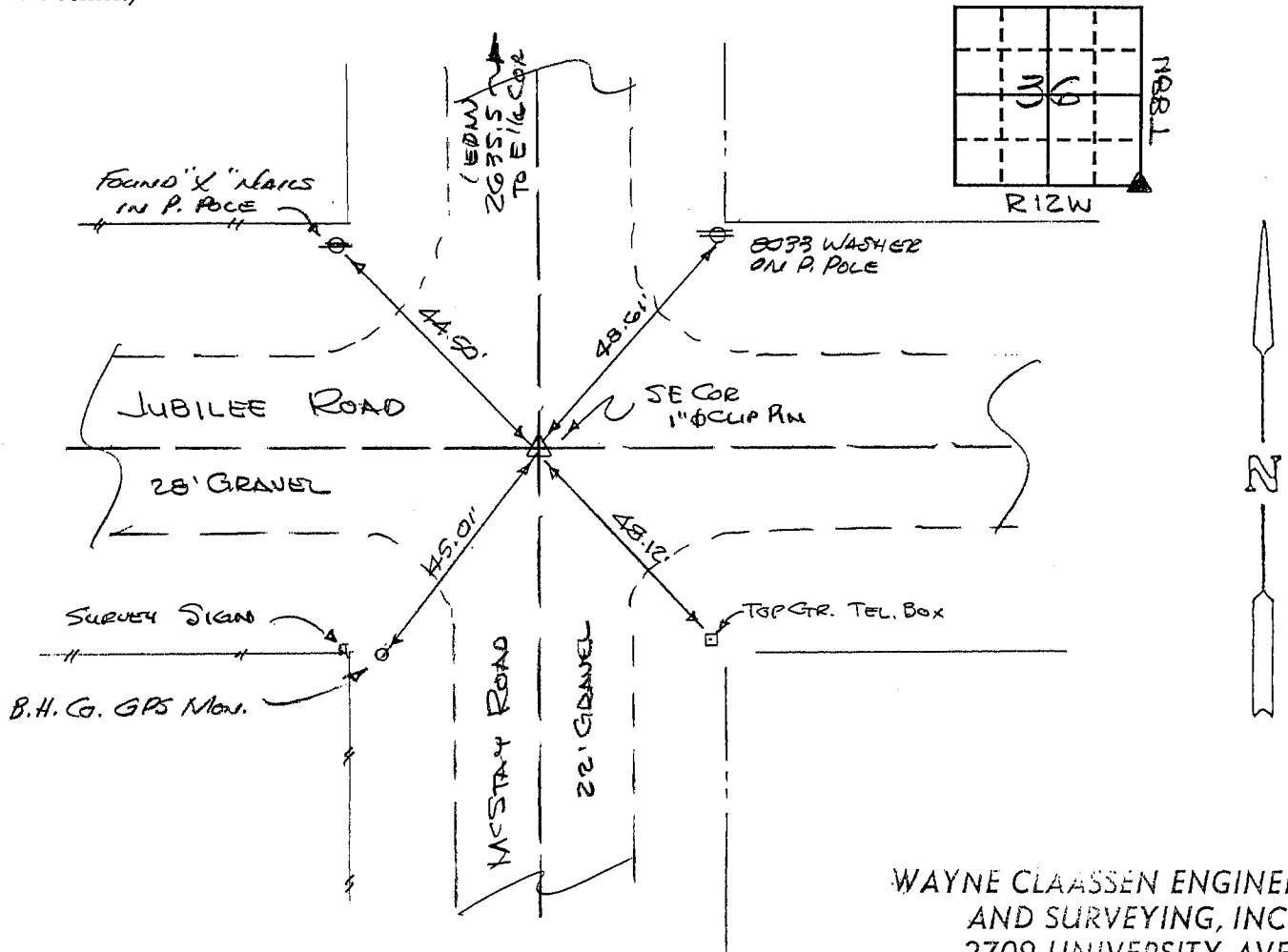
(book, page, document number, etc.)

Now reason for preparing this certificate, the evidence and detailed procedures used in establishing the corner positions and monumentation found or placed.)

Monument Description and Remarks: SE CORNER - FOUND 1" Ø CLIP PIPE USING
BLACK HAWK COUNTY TIES.

PLAN - VIEW

(Show a minimum of three reference ties to durable physical objects, relevant monuments and physical conditions that will enable recovery of the corner.)



WAYNE CLAASSEN ENGINEERING
AND SURVEYING, INC.
2709 UNIVERSITY AVE.
P.O. BOX 898
WATERLOO, IA 50704

396-60

I hereby certify that the survey work was completed and this certificate was prepared by me or under my direct personal supervision and that I am a duly registered land surveyor under the laws of the state of Iowa.

Signature: F. William King
Name typed or printed: F. WILLIAM KING

Date: 5-19-1994 Reg. No. 8033

Corners	Section	Twp	Range
SE	36	88N	12W



MISC. BK. 311 p. 208