

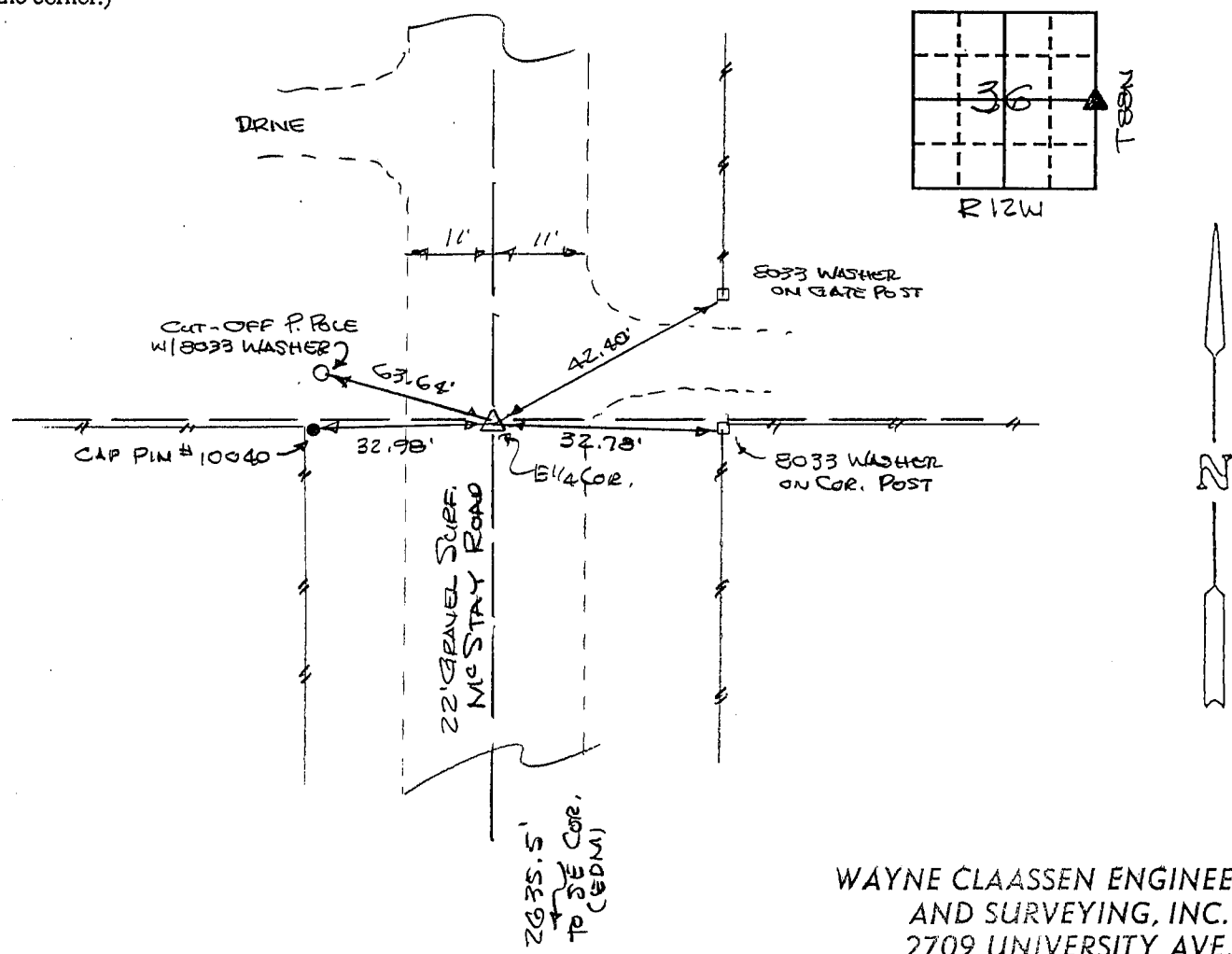
UNITED STATES PUBLIC LAND SURVEY CORNER CERTIFICATE  
OF

Land Survey Monuments situated in Section 36, Township 88N, Range 12W, of the Fifth Principal Meridian, BLACK HAWK County, Iowa.  
Previously recorded in N/A (book, page, document number, etc.) in County Recorder's Office.

How reason for preparing this certificate, the evidence and detailed procedures used in establishing the corner positions and monumentation found or placed.)  
Monument Description and Remarks: E 1/4 CORNER - FOUND 3/8" Ø REBAR USING BLACK  
HAWK COUNTY TIES.

PLAN - VIEW

(Show a minimum of three reference ties to durable physical objects, relevant monuments and physical conditions that will enable recovery of the corner.)



WAYNE CLAASSEN ENGINEERING  
AND SURVEYING, INC.  
2709 UNIVERSITY AVE.  
P.O. BOX 898  
WATERLOO, IA 50704

396-60

I hereby certify that the survey work was completed and this certificate was prepared by me or under my direct personal supervision and that I am a duly registered land surveyor under the laws of the state of Iowa.

Signature: F. William King  
Name typed or printed: F. WILLIAM KING  
Date: 5-19-1994 Reg. No. 8033

Corners	List Corners to be Indexed		
	Section	Twp	Range
E 1/4	36	88N	12W



MISC. BK: 311 p. 206