

Paul H. Helland, 1107 Technology Parkway, Cedar Falls, Iowa 50613-6951, (319)-266-0161

UNITED STATES PUBLIC LAND SURVEY CORNER CERTIFICATE
OFLAND SURVEY MONUMENTS SITUATED IN SECTION NO. 36, TOWNSHIP NO. 88 NORTH, RANGE
NO. 12 WEST OF THE FIFTH PRINCIPAL MERIDIAN, BLACK HAWK COUNTY, IOWA.PREVIOUSLY RECORDED IN N/A(SHOW REASON FOR PREPARING THIS CERTIFICATE, THE EVIDENCE AND DETAILED PROCEDURES USED IN ESTABLISHING THE
CORNER POSITIONS AND MONUMENTATION FOUND OR PLACED.)

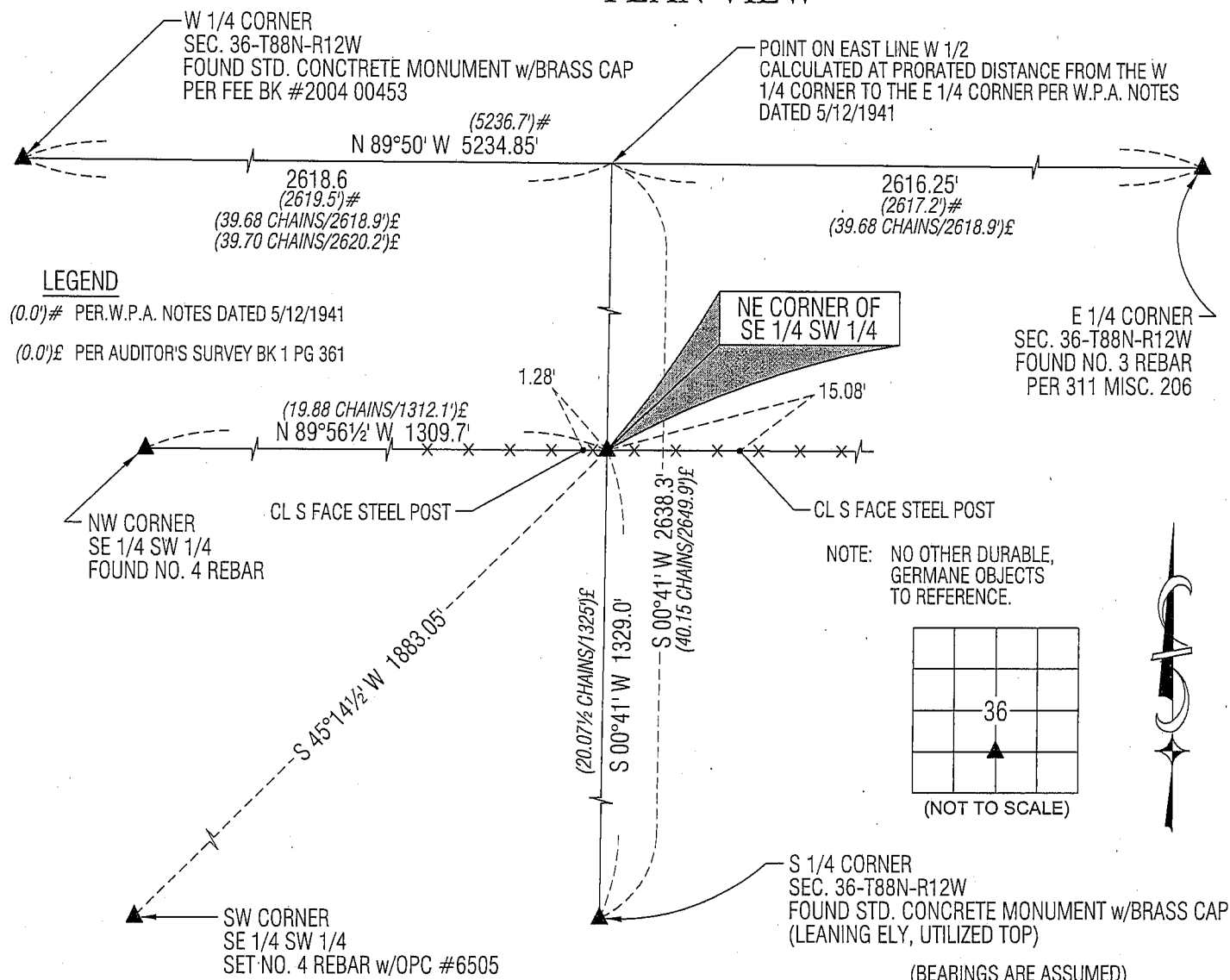
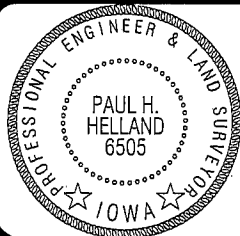
MONUMENT DESCRIPTION AND REMARKS:

NO USPLSCC ON FILE. SURVEY COMPLETED IN THE SE 1/4 OF THE SW 1/4 OF SEC. 36-T88N-R12W.

NE CORNER SE 1/4 SW 1/4: AUDITOR'S SURVEY BK 1 PG 361 DATED 2/12/1869 CALLS FOR [STAKE]. NO BLACK HAWK COUNTY ENGINEER REFERENCE TIES AVAILABLE. CALCULATED A POSTION USING AN EXISTING FENCE RUNNING EAST-WEST TO ESTABLISH NORTHING AND USING A LINE RUNNING BETWEEN THE S 1/4 CORNER & CALCULATED POINT NEAR THE CENTER OF SECTION (CALCULATED POINT BEING ON THE EAST LINE OF WEST HALF) PER W.P.A. NOTES, TO ESTABLISH THE EASTING. AT THIS INTERSECTION FOUND TWO IRON BRACES (BELIEVED TO BE USED BETWEEN BRACE POSTS AND CORNER POST) LYING PARALLEL WITH FENCE. PROBED IN A 4'±Ø CIRCLE 4'± DEEP AT SAID INTERSECTION AND FOUND NOTHING. SET NO. 4 REBAR w/OPC #6505 AT SAID INTERSECTION AND UTILIZED AS CORNER.

(SHOW A MINIMUM OF THREE REFERENCE TIES TO DURABLE PHYSICAL OBJECTS, RELEVANT MONUMENTS AND PHYSICAL
CONDITIONS THAT WILL ENABLE RECOVERY OF THE CORNER.)

PLAN VIEW

HELLAND ENGINEERING & SURVEYING, LTD.
1107 Technology Parkway
Cedar Falls, Iowa 50613-6951
(319)-266-0161SHINER = 8D NAIL & 1 5/16"Ø METAL SHINER
BRASS TAG = 13/16"Ø BRASS TAG
OPC = PLASTIC CAP (O=ORANGE, R=RED, Y=YELLOW)
(00') RECORDED AS FILE NAME: 08-280C5.DWGI hereby certify that this land surveying document was prepared
and the related survey work was performed by me or under my
direct personal supervision and that I am a duly licensed Land
Surveyor under the laws of the State of Iowa.*Paul H. Helland 9/26/08*
Paul H. Helland
License Number 6505
My license renewal date is December 31, 2009.
All pages or sheets are covered by this seal except:

LIST CORNERS TO BE INDEXED

CORNER	SECTION	TOWNSHIP	RANGE
NE COR. SE 1/4 SW 1/4	36	88N	12W
SE COR. NE 1/4 SW 1/4	36	88N	12W
SW COR. NW 1/4 SE 1/4	36	88N	12W
NW COR. SW 1/4 SE 1/4	36	88N	12W