



Doc ID: 009751030001 Type: GEN  
Recorded: 01/28/2020 at 12:24:42 PM  
Fee Amt: \$7.00 Page 1 of 1  
Black Hawk County Iowa  
SANDIE L. SMITH RECORDER

File 2020-00013220

Reserved for County Recorder's use.

Kyle J. Helland, 6109 Chancellor Drive, Cedar Falls, Iowa 50613-6916, (319)-266-0161

## UNITED STATES PUBLIC LAND SURVEY CORNER CERTIFICATE OF

LAND SURVEY MONUMENTS SITUATED IN SECTION NO. 35, TOWNSHIP NO. 88 NORTH, RANGE  
NO. 12 WEST OF THE FIFTH PRINCIPAL MERIDIAN, BLACK HAWK COUNTY, IOWA.  
PREVIOUSLY RECORDED IN N/A.

(SHOW REASON FOR PREPARING THIS CERTIFICATE, THE EVIDENCE AND DETAILED PROCEDURES USED IN ESTABLISHING THE  
CORNER POSITIONS AND MONUMENTATION FOUND OR PLACED.)

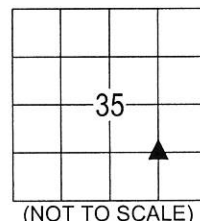
### MONUMENT DESCRIPTION AND REMARKS:

NO USPLSCC ON FILE. SURVEY COMPLETED IN THE SE 1/4 OF SEC. 35-T88N-R12W.

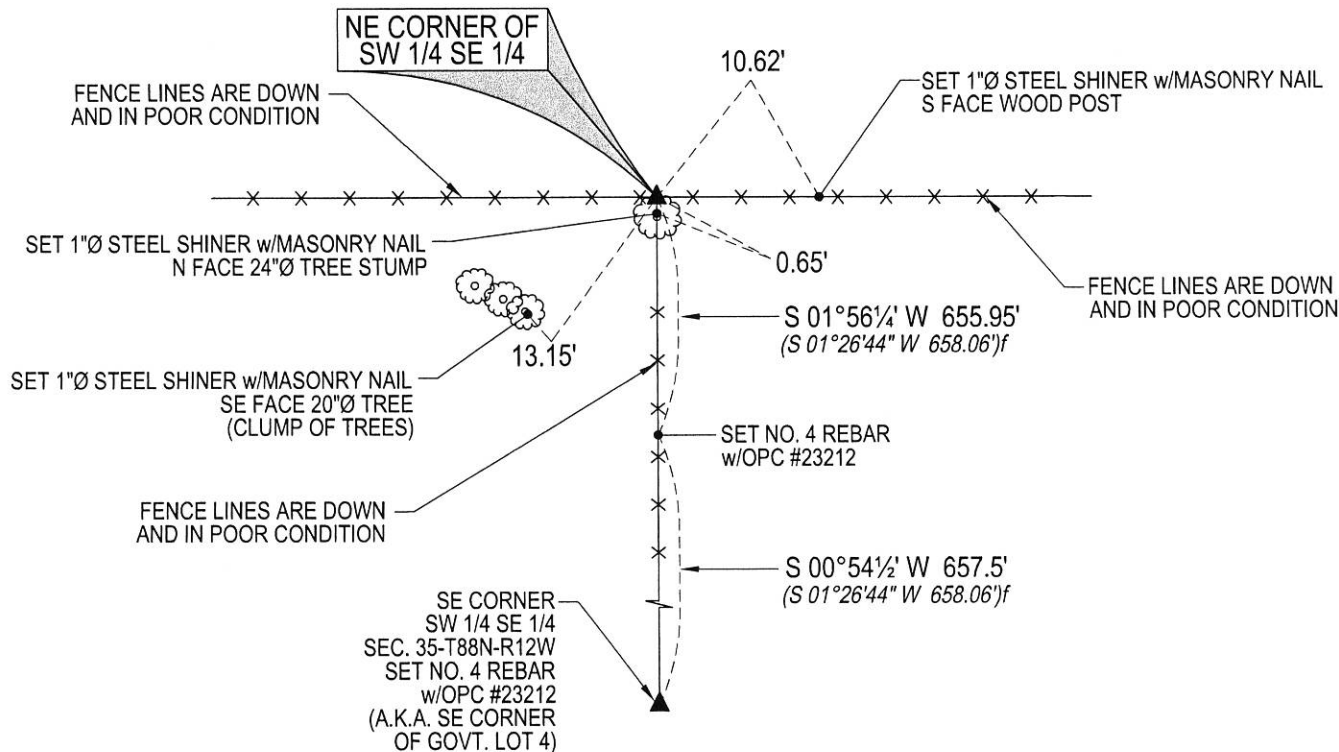
NE CORNER OF THE SW 1/4 SE 1/4: PLAT OF SURVEY 250 MISC. 683 DATED 05/16/1983 DOES NOT STATE WHAT WAS  
FOUND OR SET. SEARCHED ARE WITH MAGNETIC DETECTOR AND PROBED NOTHING FOUND, THEREFORE SET NO. 4  
REBAR w/OPC #23212 IN WIRE LOOM OF OLD CORNER POST (NOW REMOVED) FALLS IN LINE WITH DOWNED FENCES  
RUNNING EAST WEST AND SOUTH.

### PLAN VIEW

(SHOW A MINIMUM OF THREE REFERENCE TIES TO DURABLE PHYSICAL OBJECTS, RELEVANT MONUMENTS AND PHYSICAL  
CONDITIONS THAT WILL ENABLE RECOVERY OF THE CORNER.)



(NOT TO SCALE)



(BEARINGS ARE ASSUMED)



HELLAND ENGINEERING & SURVEYING, LTD.  
6109 Chancellor Drive  
Cedar Falls, Iowa 50613-6916  
(319)-266-0161

BRASS TAG = 4d. NAIL & 13/16"Ø BRASS TAG DRAWN BY: CDR  
SHINER = 1"Ø STEEL SHINER w/MASONRY NAIL  
OPC = PLASTIC CAP (O=ORANGE, R=RED, Y=YELLOW)  
(00') RECORDED AS FILE NAME: 20-102-45.DWG



I hereby certify that this land surveying document was prepared  
and the related survey work was performed by me or under my  
direct personal supervision and that I am a duly licensed  
Professional Land Surveyor under the laws of the State of Iowa.

*Kyle J. Helland* 01/28/2020  
Kyle J. Helland  
License Number 23212  
My license renewal date is December 31, 2021.  
All pages or sheets are covered by this seal except:

### LIST CORNERS TO BE INDEXED

CORNER	SECTION	TOWNSHIP	RANGE
NE COR. SW ¼ SE ¼	35	88N	12W
SE COR. NW ¼ SE ¼	35	88N	12W
SW COR. NE ¼ SE ¼	35	88N	12W
NW COR. SE ¼ SE ¼	35	88N	12W