

ENV WAYNE CLAASSEN ENGINEERING AND SURVEYING, INC.  
P.O. BOX 898 WATERLOO, IOWA 50704-0898

PHONE: (VOICE) 319-235-6294  
(FAX) 319-235-0028

## UNITED STATES PUBLIC LAND SURVEY CORNER CERTIFICATE

Land Survey Monuments situated in Section 35, Township 88 North, Range 12 West, of the Fifth Principal Meridian, Black Hawk County, Iowa.

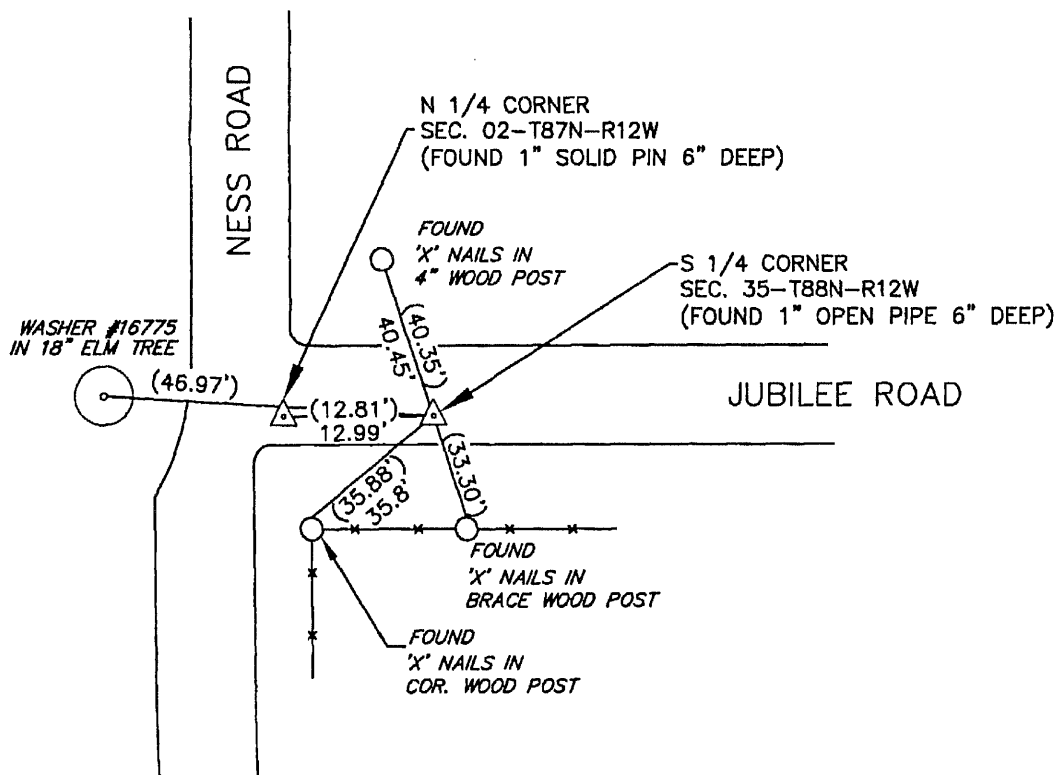
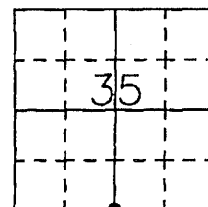
Previously recorded in \_\_\_\_\_ in County Recorder's Office.  
(book, page, document number, etc.)

### Monument Description and Remarks

As per WPA notes in the Black Hawk County Engineer's Office: on 8/20/1940 indicates corner is 12.75 feet East of the North Quarter corner. on 5/9/1941 indicates corner was found and tied out. On 02/27/80 Set "steel pipe 6" deep". Found 1" open pipe 6" deep. This certificate was filed because there is no certificate on file.

### PLAN - VIEW

000.00 DENOTES RECORD DIMENSION (WPA NOTES)  
(000.00) DENOTES FIELD DIMENSION



BK 628-74

I hereby certify that this land surveying document was prepared and the related survey work was performed by me or under my direct personal supervision and that I am a duly Licensed Land Surveyor under the laws of the State of Iowa.

Signature: David L. Scheil  
David L. Scheil, L.S.

Date: APRIL 01, 2010 Lic. No. 16775

Pages or Sheets Covered by this Seal: THIS SHEET ONLY.

My license renewal date is December 31, 2010

SEAL

### List Corners to be Indexed

Corners	Section	Twp	Range
S 1/4 CORNER,	35	88 N	12 W

