

Jeffrey P. Helland, 1107 Technology Parkway, Cedar Falls, Iowa 50613-6951, (319)-266-0161

UNITED STATES PUBLIC LAND SURVEY CORNER CERTIFICATE OF

LAND SURVEY MONUMENTS SITUATED IN SECTION NO. 35, TOWNSHIP NO. 88 NORTH, RANGE
NO. 12 WEST OF THE FIFTH PRINCIPAL MERIDIAN, BLACK HAWK COUNTY, IOWA.
PREVIOUSLY RECORDED IN FEE BOOK #2002 31060

(SHOW REASON FOR PREPARING THIS CERTIFICATE, THE EVIDENCE AND DETAILED PROCEDURES USED IN ESTABLISHING THE
CORNER POSITIONS AND MONUMENTATION FOUND OR PLACED.)

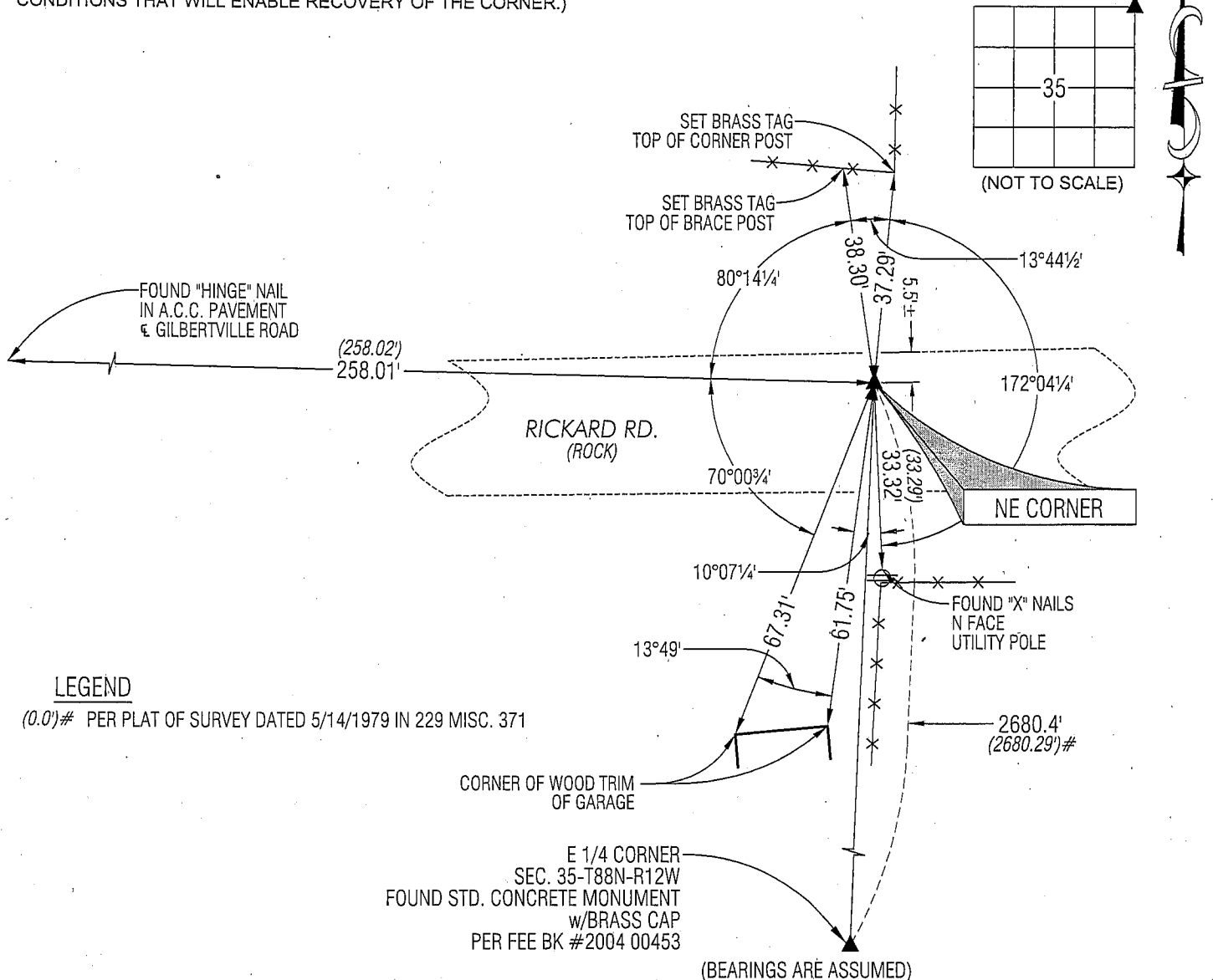
MONUMENT DESCRIPTION AND REMARKS:

USPLSCC FEE BOOK #2002 31060 REFERENCE TIES HAVE CHANGED. SURVEY COMPLETED IN THE NW 1/4 OF SEC.
36-T88N-R12W.

→ NE CORNER: USPLSCC FEE BOOK #2002 31060 CALLS FOR [FOUND 5/8" REBAR @ 2" DEEP, PER REC. COUNTY TIES IN BK.
#1001 (RED DOT), AS RETIED ON 6-11-92 AND DENOTED AS "FOUND STD. C.M. & SET REBAR @ 1" DP." MONUMENT
RECOVERED FOR GEOM. & LAND LINE REF. ON PROPOSED BRIDE REPL. PROJECT, N. OF INTERSECTION WITH GILBERTVILLE
RD. @ INDIAN CR.] FOUND NO. 5 REBAR 0.2' DEEP.

PLAN VIEW

(SHOW A MINIMUM OF THREE REFERENCE TIES TO DURABLE PHYSICAL OBJECTS, RELEVANT MONUMENTS AND PHYSICAL
CONDITIONS THAT WILL ENABLE RECOVERY OF THE CORNER.)



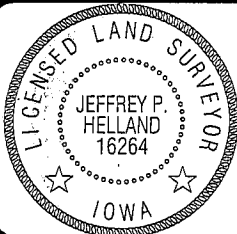
LEGEND

(0.0')# PER PLAT OF SURVEY DATED 5/14/1979 IN 229 MISC. 371



HELLAND ENGINEERING & SURVEYING, LTD.
1107 Technology Parkway
Cedar Falls, Iowa 50613-6951
(319)-266-0161

SHINER = 8D NAIL & 1 5/16"Ø METAL SHINER
BRASS TAG = 13/16"Ø BRASS TAG
OPC = PLASTIC CAP (O=ORANGE, R=RED, Y=YELLOW)
(00') RECORDED AS FILE NAME: 08-339C1.DWG



I hereby certify that this land surveying document was prepared
and the related survey work was performed by me or under my
direct personal supervision and that I am a duly licensed Land
Surveyor under the laws of the State of Iowa.

Jeffrey P. Helland 12/19/08
Jeffrey P. Helland
License Number 16264
My license renewal date is December 31, 2009.
All pages or sheets are covered by this seal except:

LIST CORNERS TO BE INDEXED

CORNER	SECTION	TOWNSHIP	RANGE
NE CORNER	35	88N	12W
SE CORNER	26	88N	12W
SW CORNER	25	88N	12W
NW CORNER	36	88N	12W

PL 12-30-08 34700

Rec.