

Reserved for County Recorder's use.

Kyle J. Helland, 6109 Chancellor Drive, Cedar Falls, Iowa 50613-6916, (319)-266-0161

UNITED STATES PUBLIC LAND SURVEY CORNER CERTIFICATE OF

LAND SURVEY MONUMENTS SITUATED IN SECTION NO. 35, TOWNSHIP NO. 88 NORTH, RANGE
NO. 12 WEST OF THE FIFTH PRINCIPAL MERIDIAN, BLACK HAWK COUNTY, IOWA.
PREVIOUSLY RECORDED IN N/A

(SHOW REASON FOR PREPARING THIS CERTIFICATE, THE EVIDENCE AND DETAILED PROCEDURES USED IN ESTABLISHING THE
CORNER POSITIONS AND MONUMENTATION FOUND OR PLACED.)

MONUMENT DESCRIPTION AND REMARKS:

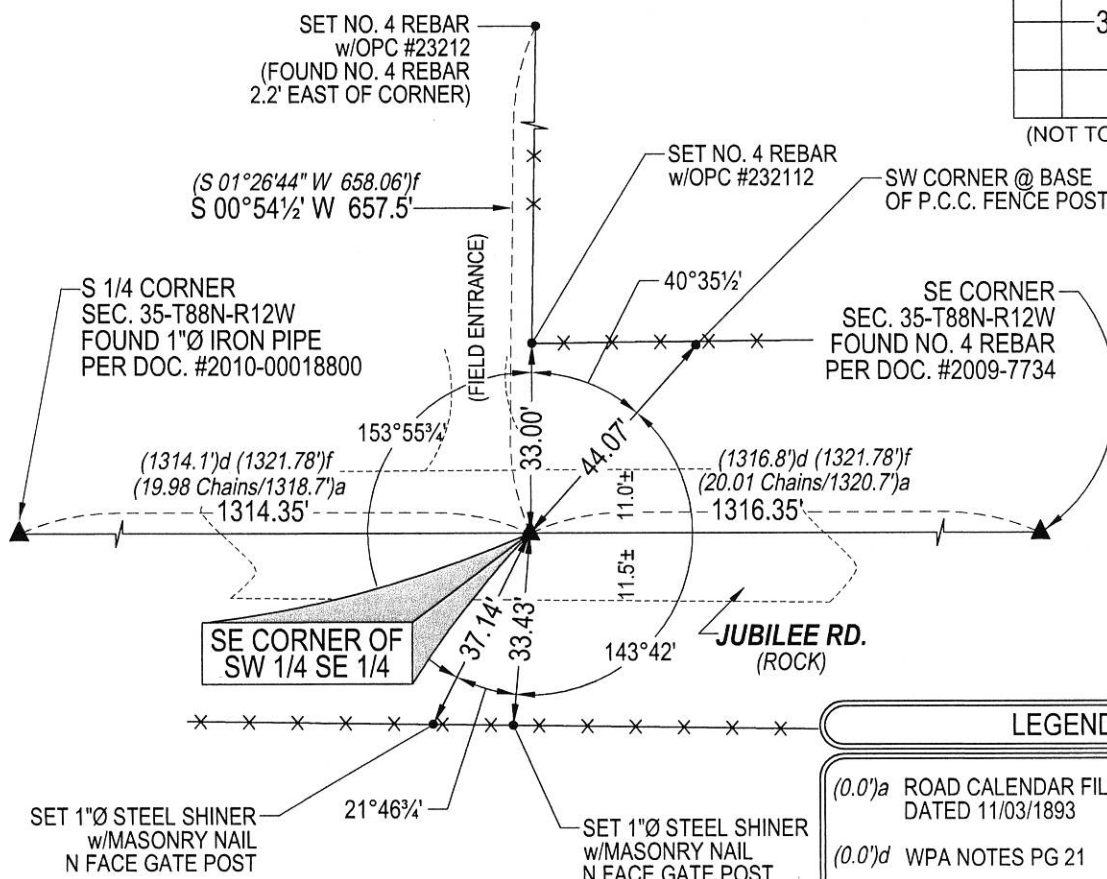
NO USPLSCC ON FILE. SURVEY COMPLETED IN THE SE 1/4 OF SEC. 35-T88N-R12W.

→ **SE CORNER OF THE SW 1/4 SE 1/4:** ROAD CALENDAR FILE 520 DATED 11/03/1893 CALLS FOR [1/4 1/4 COR. SET CHARRED
OAK STAKE AND STONE IN PLACE]. WPA NOTES PG 21 CALLS FOR [FE N]. SEARCHED AREA WITH MAGNETIC
DETECTOR AND EXCAVATED 3'Ø HOLE 2' DEEP AND PROBED IN ALL DIRECTIONS, NOTHING FOUND, THEREFORE SET
NO. 4 REBAR w/OPC #23212 AT PRORATED DISTANCE PER SAID WPA NOTES AND SAID ROAD CALENDAR DISTANCES.
SAID CORNER FALLS IN LINE WITH FENCE LINE RUNNING NORTH.

NOTE: SAID CORNER IS NOT A COMMON CORNER WITH SECTION 2-T87N-R12W (NE CORNER OF THE NW 1/4 NE 1/4 & NW
CORNER OF THE NE 1/4 NE 1/4)

PLAN VIEW

(SHOW A MINIMUM OF THREE REFERENCE TIES TO DURABLE PHYSICAL OBJECTS, RELEVANT MONUMENTS AND PHYSICAL
CONDITIONS THAT WILL ENABLE RECOVERY OF THE CORNER.)



LEGEND

- (0.0')a ROAD CALENDAR FILE 520 DATED 11/03/1893
- (0.0')d WPA NOTES PG 21
- (0.0')f PER PLAT OF SURVEY DATED 05/16/1983 250 MISC. 683

(BEARINGS ARE ASSUMED)



HELLAND ENGINEERING & SURVEYING, LTD.
6109 Chancellor Drive
Cedar Falls, Iowa 50613-6916
(319)-266-0161

BRASS TAG = 4d. NAIL & 13/16\"Ø BRASS TAG DRAWN BY: CDR
SHINER = 1\"Ø STEEL SHINER w/MASONRY NAIL
OPC = PLASTIC CAP (O=ORANGE, R=RED, Y=YELLOW)
(00') RECORDED AS FILE NAME: 20-102-43.DWG



I hereby certify that this land surveying document was prepared
and the related survey work was performed by me or under my
direct personal supervision and that I am a duly licensed
Professional Land Surveyor under the laws of the State of Iowa.

Kyle J. Helland 01/28/2020
Kyle J. Helland
License Number 23212
My license renewal date is December 31, 2021.
All pages or sheets are covered by this seal except:

LIST CORNERS TO BE INDEXED

CORNER	SECTION	TOWNSHIP	RANGE
SE COR. SW 1/4 SE 1/4	35	88N	12W
SW COR. SE 1/4 SE 1/4	35	88N	12W