

Paul H. Helland, 1107 Technology Parkway, Cedar Falls, Iowa 50613-6951, (319)-266-0161

UNITED STATES PUBLIC LAND SURVEY CORNER CERTIFICATE OF

LAND SURVEY MONUMENTS SITUATED IN SECTION NO. 35, TOWNSHIP NO. 88 NORTH, RANGE
NO. 12 WEST OF THE FIFTH PRINCIPAL MERIDIAN, BLACK HAWK COUNTY, IOWA.
PREVIOUSLY RECORDED IN FILE 2009-00012251

(SHOW REASON FOR PREPARING THIS CERTIFICATE, THE EVIDENCE AND DETAILED PROCEDURES USED IN ESTABLISHING THE
CORNER POSITIONS AND MONUMENTATION FOUND OR PLACED.)

MONUMENT DESCRIPTION AND REMARKS:

REFERENCE TIES HAVE CHANGED. SURVEY COMPLETED IN THE NW 1/4 OF SEC.36 -T88N-R12W AND IN THE NE 1/4 OF
SEC.35 -T88N-R12W

→ **E 1/4 CORNER:** USPLSCC FEE BOOK #2004 00453 DATED 7/3/03 CALLS FOR [NO BLACK HAWK COUNTY ENGINEER
REFERENCE TIES EXIST. FOUND CONCRETE MONUMENT w/BRASS CAP 1.1' DEEP. FOUND NO.4 REBAR w/ORANGE CAP
#6505 FLUSH w/SURFACE OF GROUND 0.2' EAST OF MONUMENT.] USPLSCC FILE 2009-00012251 DATED 12/19/08 CALLS
FOR [THE FENCE RUNNING EAST-WEST HAS BEEN REMOVED AND CORNER NOW FALLS IN CULTIVATED FIELD. FOUND
CONCRETE MONUMENT w/BRASS CAP 0.5' DEEP, ALSO FOUND DISTURBED NO. 4 REBAR w/ILLEGIBLE OPC ON EAST SIDE OF
CONCRETE MONUMENT, STRAIGHTENED AND LOWERED BELOW TOP OF CONCRETE MONUMENT. UTILIZED SAID CONCRETE
MONUMENT AS CORNER.] FOUND CONCRETE MONUMENT 0.2' DEEP WITH BENT NO. 4 REBAR EAST OF MONUMENT
STRAIGHTENED AND RESET 0.1' BELOW MONUMENT. UTILIZED SAID CONCRETE MONUMENT AS CORNER.

PLAN VIEW

(SHOW A MINIMUM OF THREE REFERENCE TIES TO DURABLE PHYSICAL OBJECTS, RELEVANT MONUMENTS AND PHYSICAL
CONDITIONS THAT WILL ENABLE RECOVERY OF THE CORNER.)

LEGEND

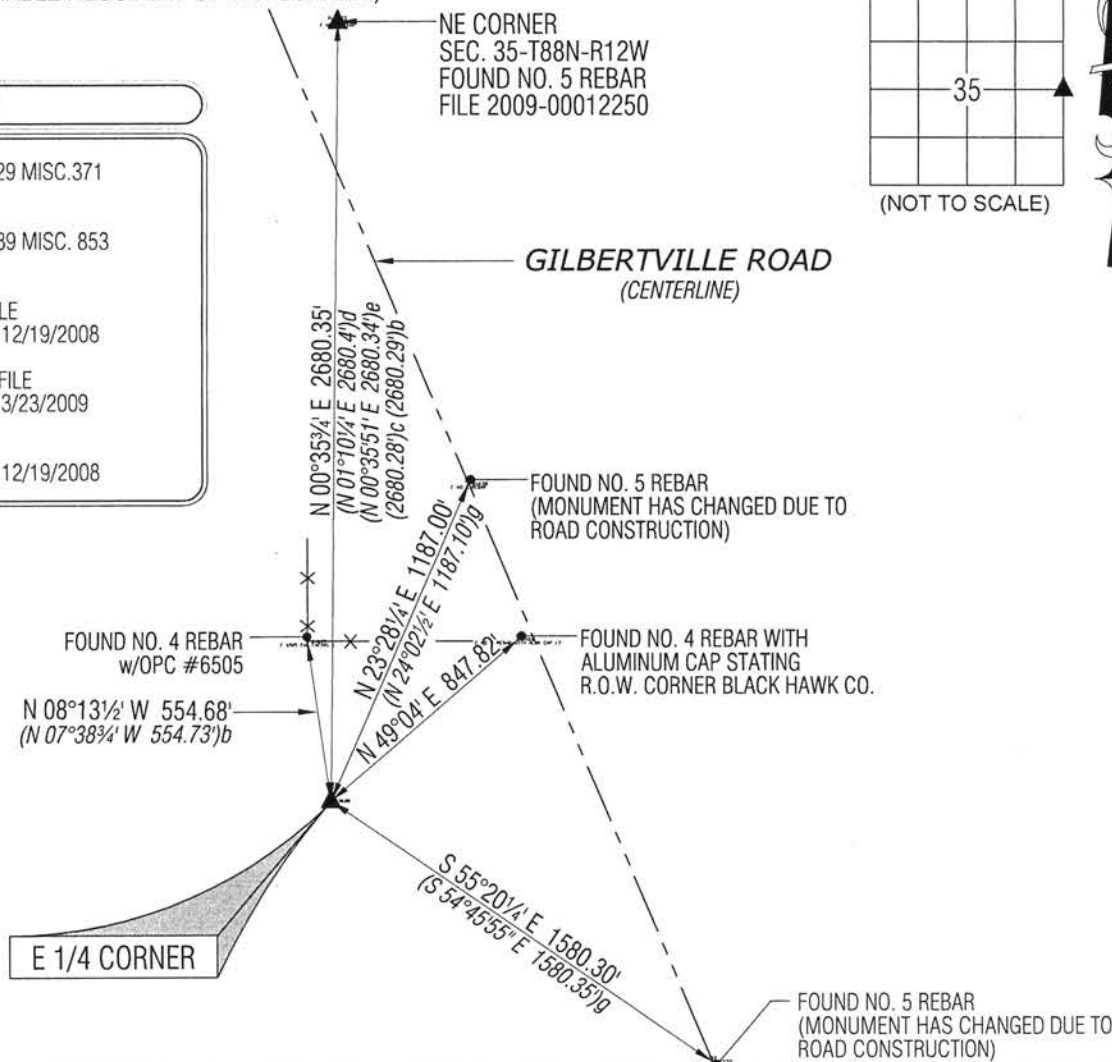
(0.0)b PER PLAT OF SURVEY 229 MISC.371
DATED 5/14/1979

(0.0)c PER PLAT OF SURVEY 289 MISC. 853
DATED 2/28/1990

(0.0)d PER PLAT OF SURVEY FILE
2009-00012255 DATED 12/19/2008

(0.0)e PER ACQUISITION PLAT FILE
2009-00022695 DATED 3/23/2009

(0.0)g PER USPLSCC FILE
2009-00012251 DATED 12/19/2008



(BEARINGS ARE ASSUMED)



HELLAND ENGINEERING & SURVEYING, LTD.
1107 Technology Parkway
Cedar Falls, Iowa 50613-6951
(319)-266-0161

SHINER = 8d NAIL & 1 5/16"Ø METAL SHINER
BRASS TAG = 8d NAIL & 13/16"Ø BRASS TAG
OPC = PLASTIC CAP (O=ORANGE, R=RED, Y=YELLOW)
(00') RECORDED AS FILE NAME: 13-143-21.DWG



I hereby certify that this land surveying document was prepared
and the related survey work was performed by me or under my
direct personal supervision and that I am a duly licensed
Professional Land Surveyor under the laws of the State of Iowa.
Paul H. Helland
License Number 6505
My license renewal date is December 31, 2013.
All pages or sheets are covered by this seal except:

LIST CORNERS TO BE INDEXED

CORNER	SECTION	TOWNSHIP	RANGE
E 1/4 CORNER	35	88N	12W
W 1/4 CORNER	36	88N	12W