

Jeffrey P. Helland, 1107 Technology Parkway, Cedar Falls, Iowa 50613-6951, (319)-266-0161

UNITED STATES PUBLIC LAND SURVEY CORNER CERTIFICATE OF

LAND SURVEY MONUMENTS SITUATED IN SECTION NO. 35, TOWNSHIP NO. 88 NORTH, RANGE
NO. 12 WEST OF THE FIFTH PRINCIPAL MERIDIAN, BLACK HAWK COUNTY, IOWA.
PREVIOUSLY RECORDED IN FEE BOOK #2004 00453.

(SHOW REASON FOR PREPARING THIS CERTIFICATE, THE EVIDENCE AND DETAILED PROCEDURES USED IN ESTABLISHING THE
CORNER POSITIONS AND MONUMENTATION FOUND OR PLACED.)

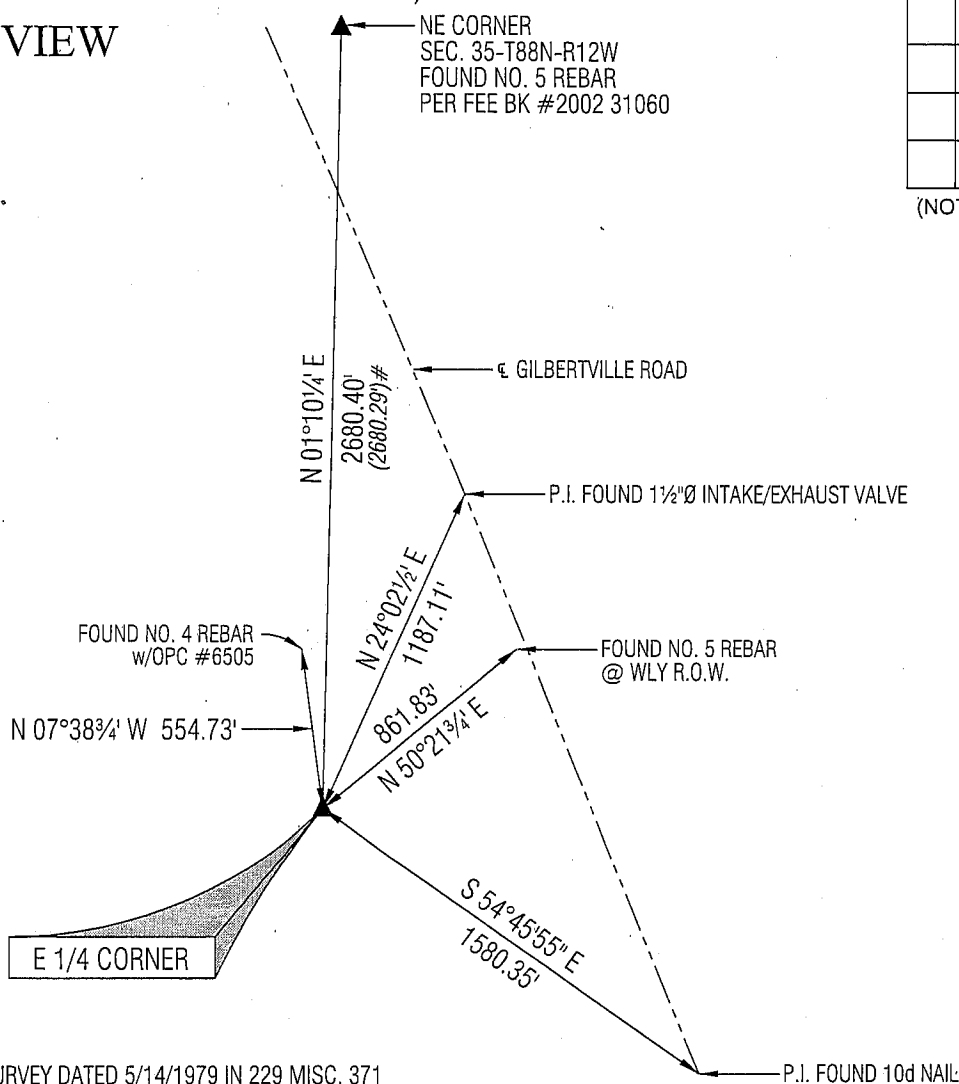
MONUMENT DESCRIPTION AND REMARKS:

USPLSCC FEE BOOK #2004 00453 REFERENCE TIES HAVE CHANGED. SURVEY COMPLETED IN THE NW 1/4 OF SEC.
36-T88N-R12W.

E 1/4 CORNER: USPLSCC FEE BOOK #2004 00453 CALLS FOR [NO BLACK HAWK COUNTY ENGINEER REFERENCE TIES EXIST.
FOUND CONCRETE MONUMENT w/BRASS CAP 1.1' DEEP. FOUND NO. 4 REBAR w/ORANGE CAP #6505 FLUSH w/SURFACE OF
GROUND 0.2' EAST OF MONUMENT.] THE FENCE RUNNING EAST-WEST HAS BEEN REMOVED AND CORNER NOW FALLS IN
CULTIVATED FIELD. FOUND CONCRETE MONUMENT w/BRASS CAP 0.5' DEEP, ALSO FOUND DISTURBED NO. 4 REBAR
w/ILLEGIBLE OPC ON EAST SIDE OF CONCRETE MONUMENT, STRAIGHTENED AND LOWERED BELOW TOP OF CONCRETE
MONUMENT. UTILIZED SAID CONCRETE MONUMENT AS CORNER.

(SHOW A MINIMUM OF THREE REFERENCE TIES TO DURABLE PHYSICAL OBJECTS, RELEVANT MONUMENTS AND PHYSICAL
CONDITIONS THAT WILL ENABLE RECOVERY OF THE CORNER.)

PLAN VIEW

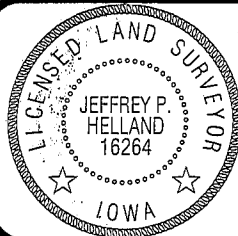


(BEARINGS ARE ASSUMED)



HELLAND ENGINEERING & SURVEYING, LTD.
1107 Technology Parkway
Cedar Falls, Iowa 50613-6951
(319)-266-0161

SHINER = 8D NAIL & 1 5/16" Ø METAL SHINER
BRASS TAG = 13/16" Ø BRASS TAG
OPC = PLASTIC CAP (O=ORANGE, R=RED, Y=YELLOW)
(00') RECORDED AS FILE NAME: 08-339C2.DWG



I hereby certify that this land surveying document was prepared
and the related survey work was performed by me or under my
direct personal supervision and that I am a duly licensed Land
Surveyor under the laws of the State of Iowa.

Jeffrey P. Helland 12/19/09
Jeffrey P. Helland
License Number 16264
My license renewal date is December 31, 2009.
All pages or sheets are covered by this seal except:

LIST CORNERS TO BE INDEXED

CORNER	SECTION	TOWNSHIP	RANGE
E 1/4 CORNER	35	88N	12W
W 1/4 CORNER	36	88N	12W

Rec.