

# United States Public Land Survey Corner Certificate

This certificate is being prepared in compliance with Iowa Code Chapter 355.11 because:

- ☒ There is no certificate on file for this corner.  
☐ There are no longer three valid ties of record.  
☐ There are changes to reference ties of record.  
☐ There is change of monumentation of record.  
☐ To clarify description of record monument (ties).

**Monument Description and Remarks:**

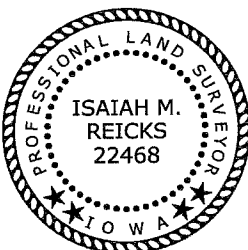
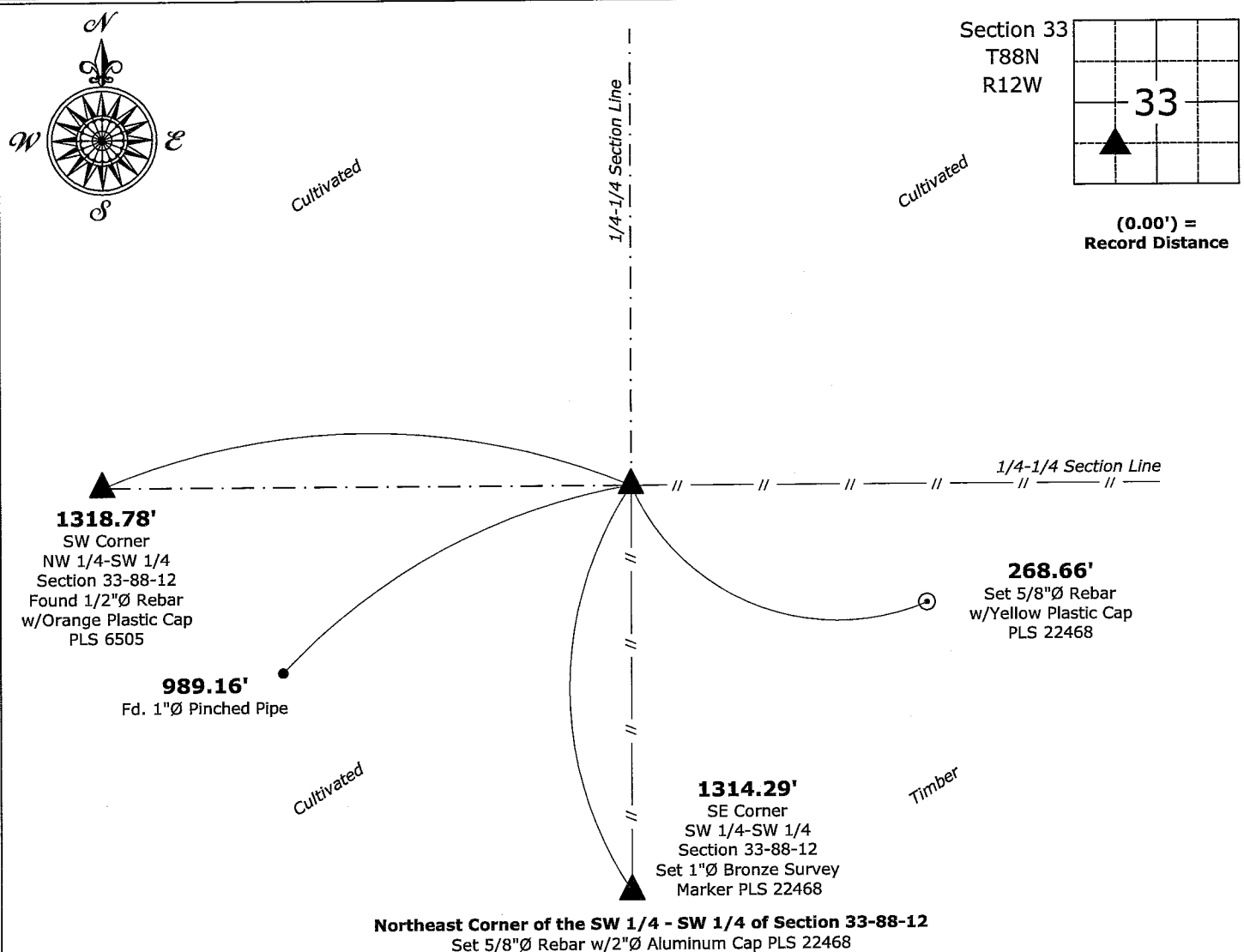
**Northeast Corner of the SW 1/4 - SW 1/4:** Set 5/8"Ø Rebar w/2"Ø Aluminum Cap PLS 22468 at the intersection of the North-South Quarter-Quarter Section Line and a Line from the Northwest Corner of the SW 1/4 - SE 1/4 to and across found monuments along the North Line of the Forest Ridge Subdivision.

An extensive search of all of the records within the County offices was performed as part of the section corner recovery. There were no records located of the perpetuation of a monument at this corner.

See Retracement Plat of Survey, as recorded in Document #2024-04947, on file in the County Recorder's Office for further information.

### Plan View - Not to Scale

(Show a minimum of three reference ties to durable physical objects, relevant monuments and physical conditions that will enable recovery of the corner.)



I hereby certify that this land surveying document was prepared and the related survey work was performed by me or under my direct personal supervision and that I am a duly licensed Land Surveyor under the laws of the State of Iowa.

Isaiah M. Reicks Date: 10-31-23

License number 22468  
My license renewal date is December 31, 2023.  
Sheets covered by this seal: Individual sheet only

List Corner to be Indexed

Corner	Section	Township	Range
NE-SW-SW	33	88	12

Project Number: 2023-564

FB:Black Hawk 11, Page(s) 22