

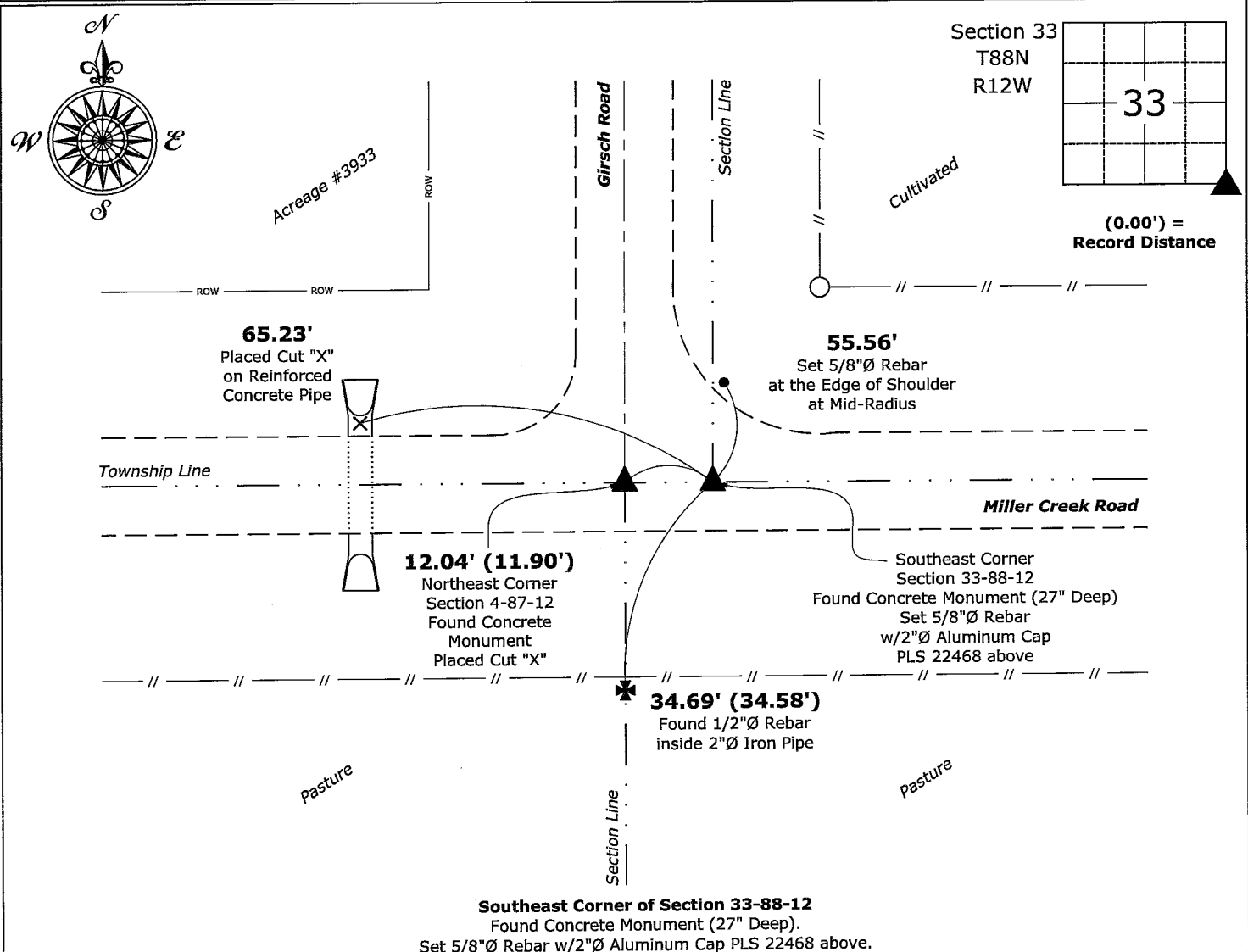
# United States Public Land Survey Corner Certificate

This certificate is being prepared in compliance with Iowa Code Chapter 355.11 because:

- ☐ There is no certificate on file for this corner.  
☐ There are no longer three valid ties of record.  
☒ There are changes to reference ties of record.  
☒ There is change of monumentation of record.  
☐ To clarify description of record monument (ties).

**Southeast Corner:** Found Concrete Monument (27" Deep) with information obtained from the previously recorded Section Corner Certificate. Placed Cut "X" at the top center of Concrete Monument. Set 5/8"Ø Rebar w/2"Ø Aluminum Cap PLS 22468 above said Cut "X" to perpetuate the Corner.

(Show a minimum of three reference ties to durable physical objects, relevant monuments and physical conditions that will enable recovery of the corner.)



I hereby certify that this land surveying document was prepared and the related survey work was performed by me or under my direct personal supervision and that I am a duly licensed Land Surveyor under the laws of the State of Iowa.

Isaiah M. Reichle 10-31-23

Isaiah M. Reicks

Date:

License number 22468

My license renewal date is December 31, 2023.

My license renewal date is December 31, 2021.  
 Sheets covered by this seal: Individual sheet only

## List Corner to be Indexed

Corner	Section	Township	Range
SE	33	88	12

Project Number: 2023-564

FB:Black Hawk 11, Page(s) 22