

PROOF FILED FOR RECORD AUG 20 2003 AT 11:00A. M. FEE N/C

COMPARED

Patricia A. Sloss

BLACK HAWK COUNTY RECORDER

BLACK HAWK COUNTY ENGINEER

PREPARED BY: BLACK HAWK COUNTY ENGINEERS OFFICE
316 E. FIFTH STREET, ROOM 211 WATERLOO, IOWA 50703PH.# (319) 833-3008
FAX.# (319) 833-3139SLSI 9-94
CERT 12-96

UNITED STATES PUBLIC LAND SURVEY CORNER CERTIFICATE OF
Land Survey Monuments situated in Section 33, Township 88 N,
Range 12 W, of the Fifth Principal Meridian, BLACK HAWK County, Iowa.
Previously recorded in Misc. Book 305, Page 444, in County Recorder's Office.
(NE COR. of 4/87N/12W)

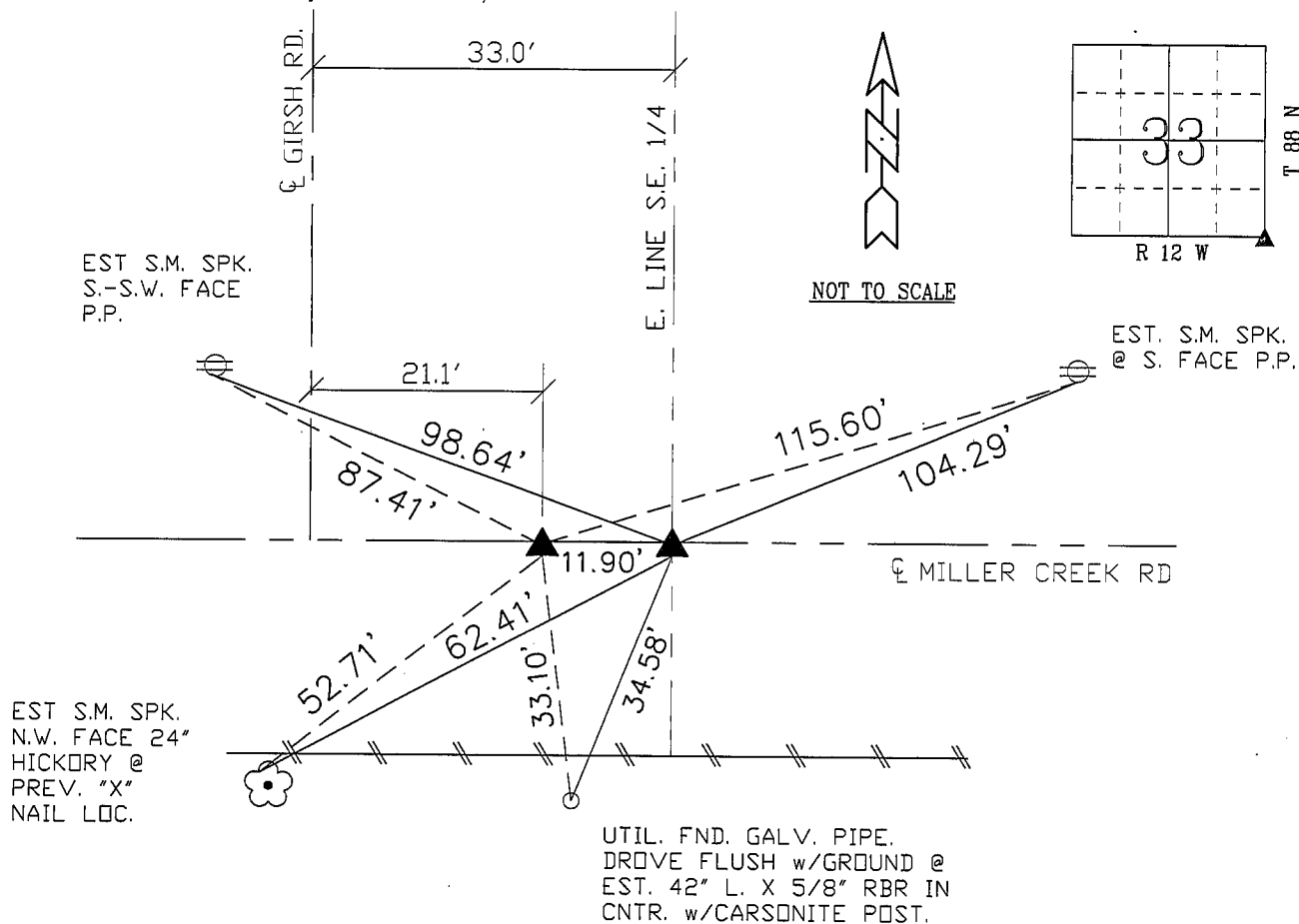
(Show reason for preparing this certificate, the evidence and detailed procedures used in establishing the corner positions and monumentation found or placed.)

Monument Description and Remarks: SE CORNER SECTION 33-88-12.
UTILIZED FOUND 40d NAIL @ 2-1/2" DEEP IN CENTERLINE MILLER CREEK
ROAD. CORNER UTILIZED FOR GIRSCH RD. EXTENTION PROJECT R.O.W. ACQ.
AND "RECORD OF SURVEY" FOR SAID SECTION.

NOTE: ALONG DOUBLE COR. TOWNSHIP LINE, WITH REFERENCE TIES TO N.E.
CORNER SECTION 04-87-12, BEING FOUND STD. W.P.A. C.M. 2-1/2" DEEP.

PLAN - VIEW

(Show a minimum of three reference ties to durable physical objects, relevant monuments and physical conditions that will enable recovery of the corner.)



NOTE: ALL DISTANCES PLUMB

"S.M." = DENOTES PLASTIC "SURVEY
MARKER" TAG, W/NAIL.

FIELD SURVEY: G.T. & M.S. 06/30/03
PREPARED BY: N.R. & G.T. 08/04/03

CERTIFICATION



I hereby certify that this land surveying document was prepared and the related survey work was performed by me or under my direct personal supervision and that I am a duly licensed Land Surveyor under the laws of the State of Iowa.

Geoffrey Allen Tinker 08/11/03
(date)
Geoffrey Allen Tinker

License Number 15748

My license renewal date is December 31, 2004

Pages or sheets covered by this seal:

This Land Corner Certificate Only.

LIST CORNERS TO BE INDEXED

Corner	Section	Township	Range
SE Cor.	33	88 N	12 W
SW Cor.	34	88 N	12 W
NE Cor.	04	87 N	12 W
NW Cor.	03	87 N	12 W