

PHONE: (VOICE) 319-235-6294
(FAX) 319-235-0028

Land Survey Monuments situated in Section 33, Township 88 North, Range 12 West, of the Fifth Principal Meridian, Black Hawk County, Iowa.

Previously recorded in Doc. No. 2005-17185 in County Recorder's Office.
(book, page, document number, etc.)

Went to location of corner and did not find mag nail & washer (PLS 16961) as per above referenced corner certificate. Set mag nail and Washer #16775 about 0.2' below seal coat surface using ties from the above referenced certificate.

Reason for filing certificate:

☐ There is no certificate on file with the Recorder's Office.

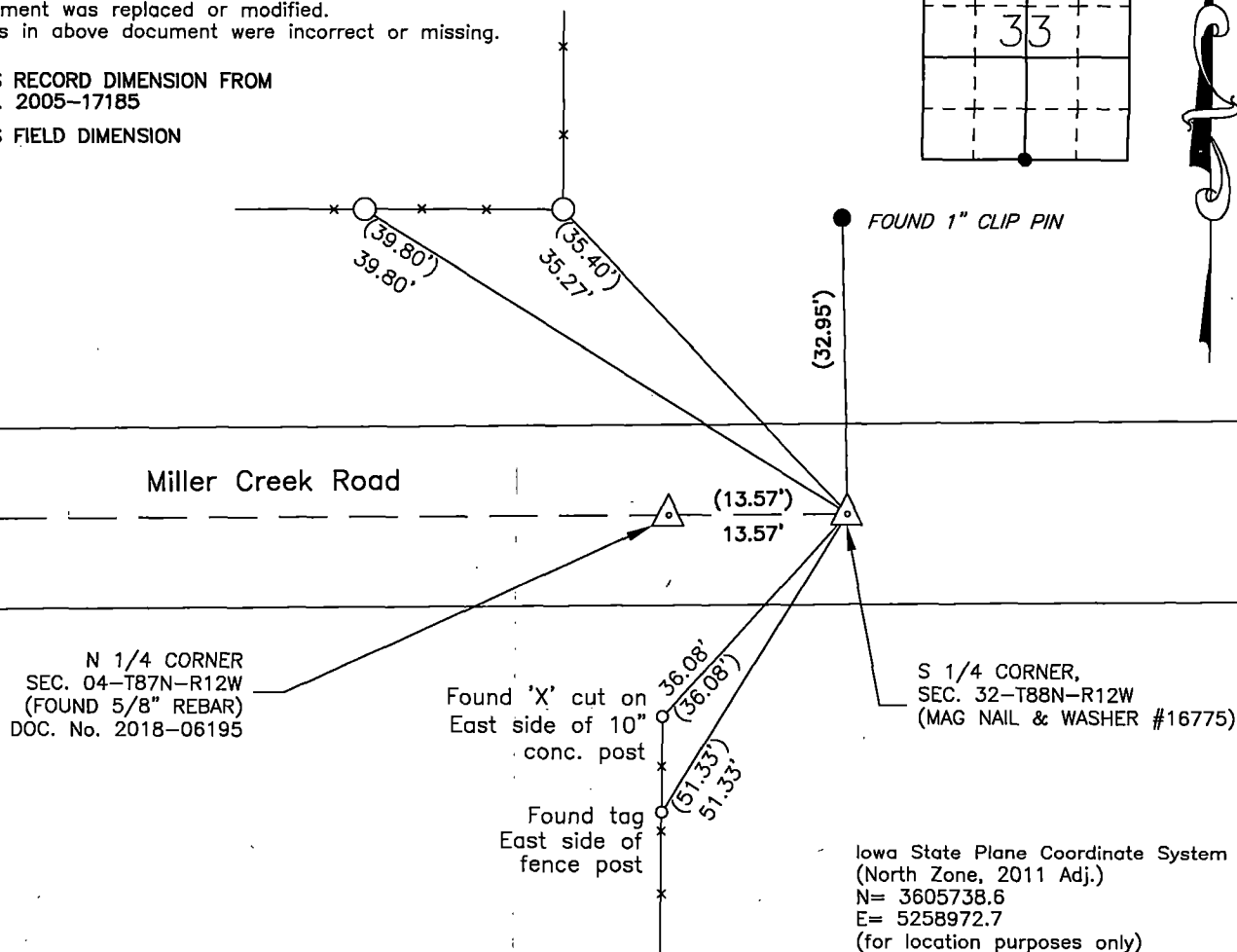
☐ Accepts corner position which differs from the one shown in above document.

☒ The corner monument was replaced or modified.

☐ The reference ties in above document were incorrect or missing.

000.00 DENOTES RECORD DIMENSION FROM
DOC. No. 2005-17185

(000.00) DENOTES FIELD DIMENSION



I hereby certify that this land surveying document was prepared and the related survey work was performed by me or under my direct personal supervision and that I am a duly Licensed Land Surveyor under the laws of the State of Iowa.

Signature: _____
David L. Scheil, L.S.

Date: June 14, 2023 Lic. No. 16775

Pages or Sheets Covered by this Seal: THIS SHEET ONLY.

My license renewal date is December 31, 2024

SEAL

List Corners to be Indexed

Corners	Section	Twp	Range
S 1/4 Corner,	33	88 N	12 W

