

ENV TEKIPPE ENGINEERING PC 128 SOUTH VINE ST WEST UNION IA 52175

TeKIPPE ENGINEERING, P.C., 128 South Vine Street, West Union, Iowa 52175 Phone (563) 422-5131

UNITED STATES PUBLIC LAND SURVEY CORNER CERTIFICATE  
OF

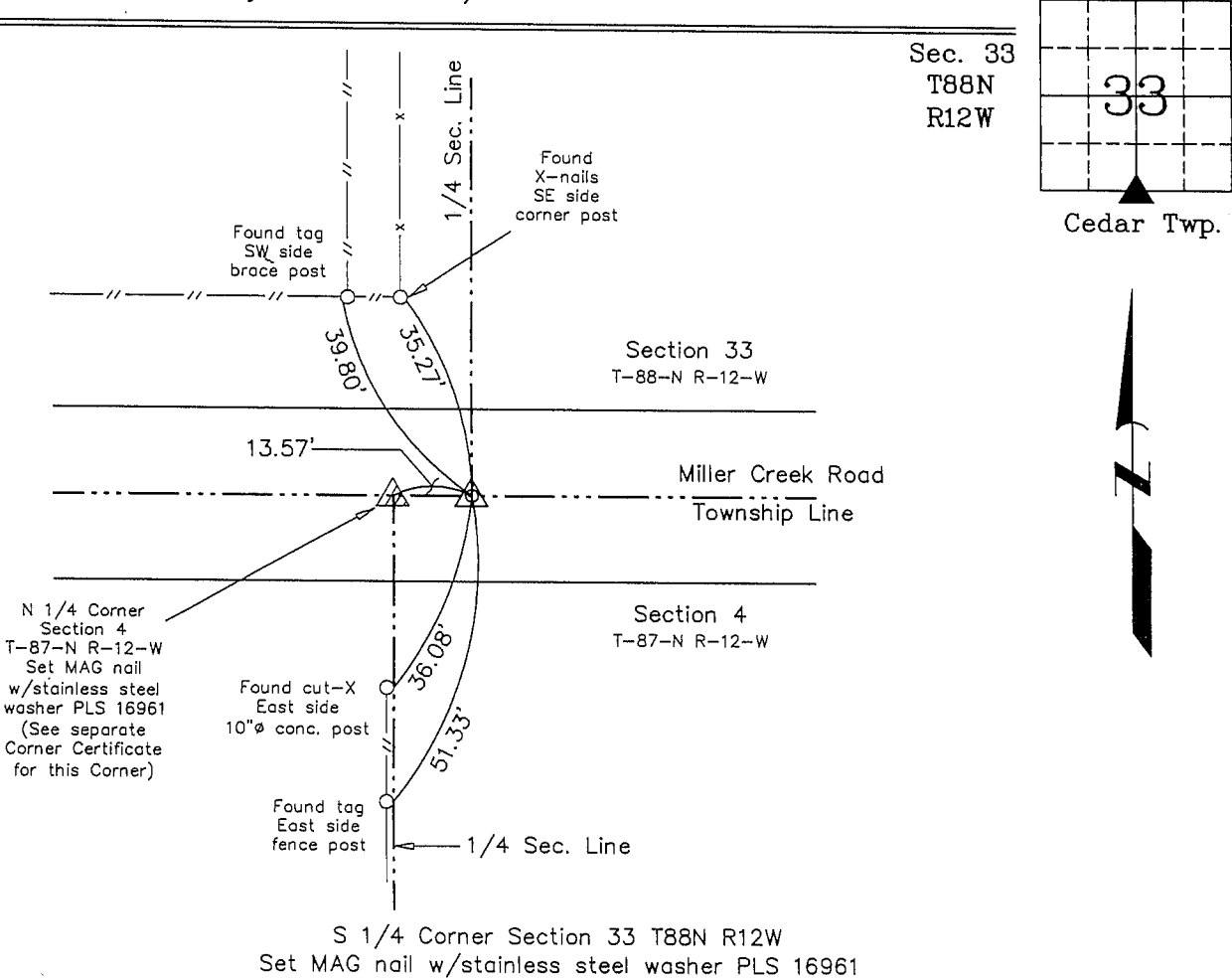
Land Survey Monuments situated in Section 33, Township 88 North, Range 12 West of the Fifth Principal Meridian, BLACK HAWK County, Iowa.  
Previously recorded in Fee Book 2004 06209 in County Recorder's Office.  
(book, page, document number, etc.)

(Show reason for preparing this certificate, the evidence and detailed procedures used in establishing the corner positions and monumentation found or placed.)

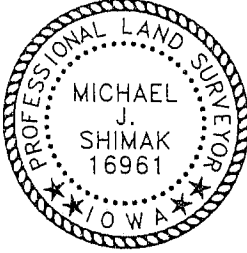
Monument Description and Remarks: S 1/4 Corner Section 33 T88N R12W: Set MAG nail w/stainless steel washer PLS 16961 from previous reference ties obtained from the previous Section Corner Certificate recorded in the Black Hawk County Recorder's Office in Fee Book 2004-06209 on August 20, 2003. Previous monument was covered by resurfacing of Miller Creek Road.

PLAN - VIEW

(Show a minimum of three reference ties to durable physical objects, relevant monuments and physical conditions that will enable recovery of the corner.)



S 1/4 Corner Section 33 T88N R12W  
Set MAG nail w/stainless steel washer PLS 16961



I hereby certify that this land surveying document was prepared and the related survey work was performed by me or under my direct personal supervision and that I am a duly licensed Land Surveyor under the laws of the State of Iowa.  
*Michael J. Shimak* January 18, 2005  
Michael J. Shimak Date  
License number 16961  
My license renewal date is December 31, 2005.  
Sheets covered by this seal: Individual

List Corners to be Indexed			
Corners	Section	Twp.	Range
S 1/4	33	88N	12W

Project Number 04118.LS  
FB. NRCS PG. 12-22  
X:\Section Corners\Sec. 33\33-88-12w.dwg