

BLACK HAWK COUNTY ENGINEER

PREPARED BY: BLACK HAWK COUNTY ENGINEERS OFFICE  
316 E. FIFTH STREET, ROOM 211 WATERLOO, IOWA 50703

PH.# (319) 833-3008  
FAX.# (319) 833-3139

SLSI 9-94  
CERT 12-96

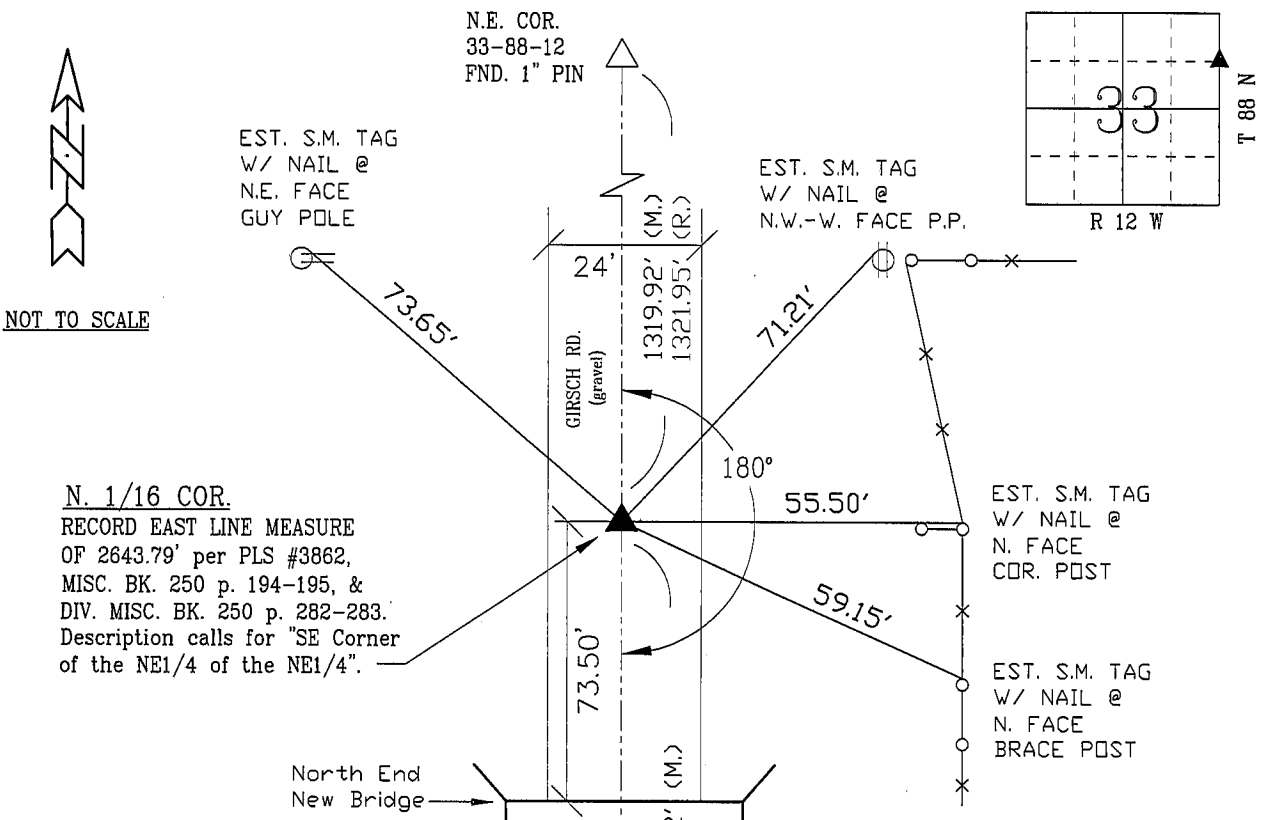
UNITED STATES PUBLIC LAND SURVEY CORNER CERTIFICATE OF  
Land Survey Monuments situated in Section 33, Township 88 N,  
Range 12 W, of the Fifth Principal Meridian, BLACK HAWK County, Iowa.  
Previously recorded in Misc. Book N/A, Page N/A, in County Recorder's Office.

(Show reason for preparing this certificate, the evidence and detailed procedures used in establishing the corner positions and monumentation found or placed.)

Monument Description and Remarks: N. 1/16 SECTION 33-88-12:  
SET 5/8" RBR. w/ 2" ALUM. CAP MARKED "BLACK HAWK CO. LAND CORNER"  
@ 9" DEEP C.I. GIRSCH RD., AT MID-POINT OF E. LINE, N.E. 1/4 OF SAID  
SECTION 33. CORNER EST. FOR R.O.W. ACQ. ON BRIDGE REPL. PROJECT  
TO SOUTH.

PLAN - VIEW

(Show a minimum of three reference ties to durable physical objects, relevant monuments and physical conditions that will enable recovery of the corner.)



NOTE: ALL DISTANCES PLUMB

"S.M." = DENOTES PLASTIC "SURVEY  
MARKER" TAG, W/NAIL.  
"(R.)" = DENOTES RECORD MEASURE  
PER PLS #3862 in MISC.  
BOOK 250 p. 282-283

E. 1/4 COR.  
33-88-12  
FND. 5/8" RBR.

FIELD SURVEY: G.T. & C.W. 04/02/03  
PREPARED BY: C.W. & G.T. 08/07/03

CERTIFICATION



I hereby certify that this land surveying document was prepared and the related survey work was performed by me or under my direct personal supervision and that I am a duly licensed Land Surveyor under the laws of the State of Iowa.  
Geoffry Allen Tinker 08/11/03 (date)  
License Number 15748  
My license renewal date is December 31, 2004  
Pages or sheets covered by this seal:  
This Land Corner Certificate Only.

LIST CORNERS TO BE INDEXED

Corner	Section	Township	Range
N. 1/16	33	88 N	12 W
N. 1/16	34	88 N	12 W