

* STEVE BUSSE P.O. BOX 241 508 ELM ST. ALLISON, IOWA 50602 319-267-2519

UNITED STATES PUBLIC LAND SURVEY CORNER CERTIFICATE
OF

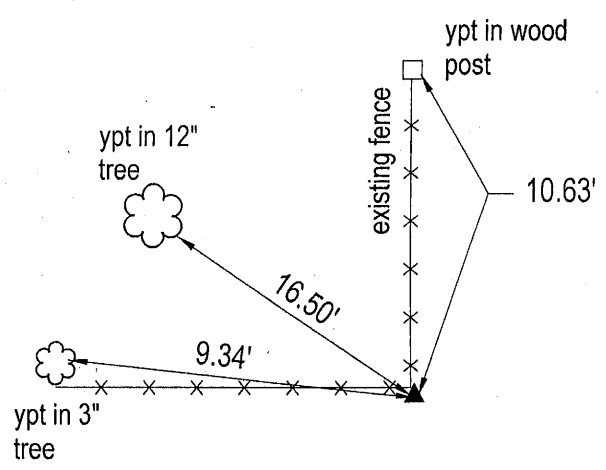
LAND SURVEY MONUMENTS SITUATED IN SECTION NO. 32, TOWNSHIP NO. 88 NORTH, RANGE NO. 12 WEST OF THE FIFTH PRINCIPAL MERIDIAN, BLACK HAWK COUNTY, IOWA.
PREVIOUSLY RECORDED IN N/A

(SHOW REASON FOR PREPARING THIS CERTIFICATE, THE EVIDENCE AND DETAILED PROCEDURES USED IN ESTABLISHING THE CORNER POSITIONS AND MONUMENTATION FOUND OR PLACED.)
MONUMENT DESCRIPTION AND REMARKS:

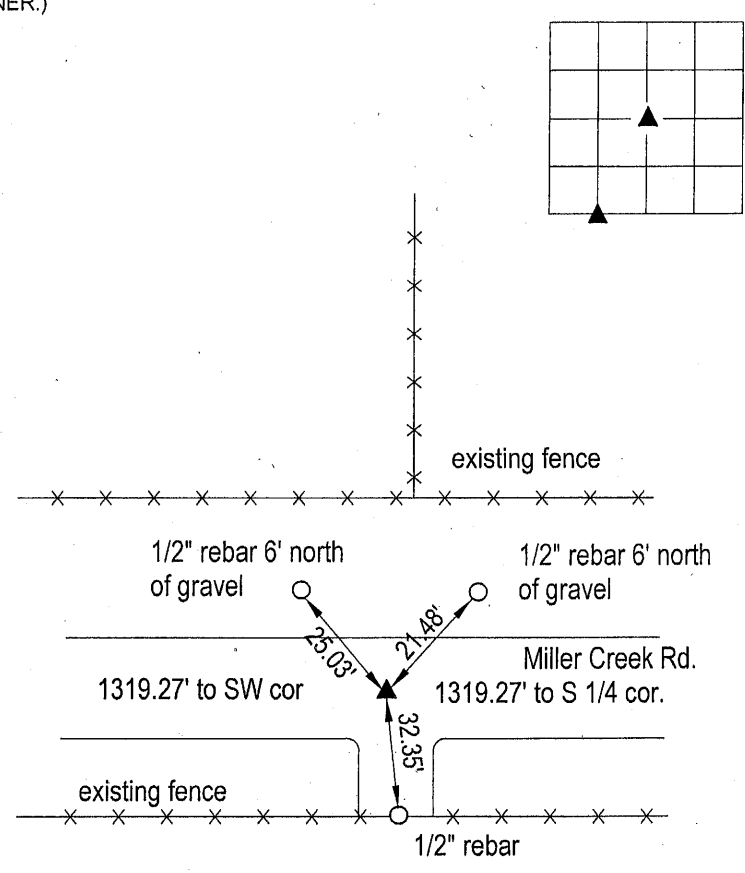
We found no record of monumentation at either corner. No certificates are recorded for either corner. At center of section we searched area around fence line north & west with tile probe. Did not find anything down to 4' below ground. Set pin with cap at base of old fence post and used for center section. At the southwest corner of Southeast 1/4 of Southwest 1/4 we set pin with cap on line between Southwest corner and South 1/4 corner. Pin is at midpoint between corners. Used both corners in survey in section 32 for Garold Foulk.

PLAN VIEW

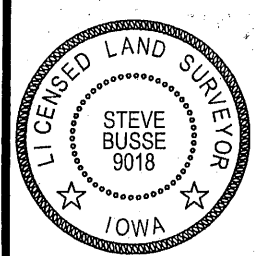
(SHOW A MINIMUM OF THREE REFERENCE TIES TO DURABLE PHYSICAL OBJECTS, RELEVANT MONUMENTS AND PHYSICAL CONDITIONS THAT WILL ENABLE RECOVERY OF THE CORNER.)



CENTER SECTION



SOUTHWEST CORNER OF SOUTHEAST 1/4
OF SOUTHWEST 1/4



I HEREBY CERTIFY THAT THIS LAND SURVEYING DOCUMENT WAS PREPARED AND THE RELATED SURVEY WORK WAS PERFORMED BY ME OR UNDER MY DIRECT PERSONAL SUPERVISION AND THAT I AM A DULY LICENSED LAND SURVEYOR UNDER THE LAWS OF THE STATE OF IOWA.

Steve Busse 1/9/2012
STEVE BUSSE DATE
LICENSE NUMBER 9018
MY LICENSE RENEWAL DATE IS DECEMBER 31, 2012
PAGES OR SHEETS COVERED BY THIS SEAL 1

G.P. = 2" GAS PIPE
CONC MONU = CONCRETE MONUMENT W/ PIN & ALUM CAP
"X NAILS" = CROSS NAILS IN WOOD POST
OPT = PLASTIC TAG (O=ORANGE, Y=YELLOW)
(00') RECORDED AS

LIST CORNERS TO BE INDEXED			
CORNER	SECTION	TOWNSHIP	RANGE
SW COR. SE 1/4	32	88	12
SW 1/4			
CENTER SECTION.	32	88	12