

*
STEVE BUSSE P.O. BOX 241 508 ELM ST. ALLISON, IOWA 50602 319-267-2519

UNITED STATES PUBLIC LAND SURVEY CORNER CERTIFICATE OF

LAND SURVEY MONUMENTS SITUATED IN SECTION NO. 32, TOWNSHIP NO. 88 NORTH, RANGE
NO. 12 WEST OF THE FIFTH PRINCIPAL MERIDIAN, BLACK HAWK COUNTY, IOWA.

PREVIOUSLY RECORDED IN N/A

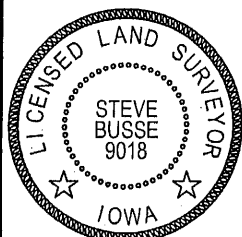
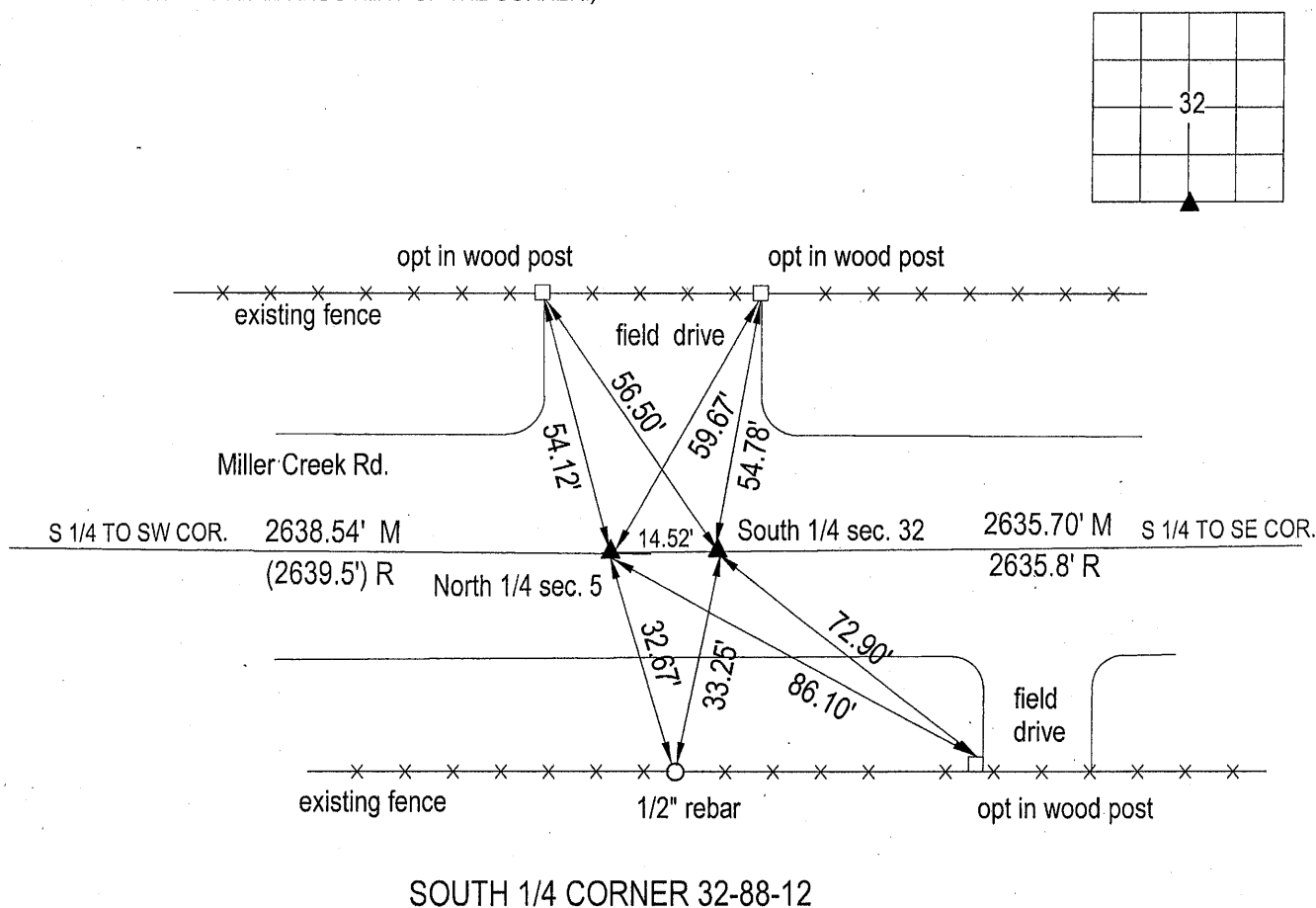
(SHOW REASON FOR PREPARING THIS CERTIFICATE, THE EVIDENCE AND DETAILED PROCEDURES USED IN ESTABLISHING THE
CORNER POSITIONS AND MONUMENTATION FOUND OR PLACED.)

MONUMENT DESCRIPTION AND REMARKS:

Found no certificate recorded for the corner. At the South 1/4 corner we measured dimensions from WPA field notes. Dug in area at 32.3' north of south right of way fence and at distance from southwest corner of section. Found concrete monument with brass cap. Monuments was 9" deep. Also dug 14.5' west of monument and found concrete monument with brass cap for north 1/4 corner of section 5 to south, also 9" deep. Used the corner in section 32 for survey for Garold Foulk. Set spike above the two concrete monuments for locating purposes only.

PLAN VIEW

(SHOW A MINIMUM OF THREE REFERENCE TIES TO DURABLE PHYSICAL OBJECTS, RELEVANT MONUMENTS AND PHYSICAL
CONDITIONS THAT WILL ENABLE RECOVERY OF THE CORNER.)



I HEREBY CERTIFY THAT THIS LAND SURVEYING DOCUMENT
WAS PREPARED AND THE RELATED SURVEY WORK WAS
PERFORMED BY ME OR UNDER MY DIRECT PERSONAL
SUPERVISION AND THAT I AM A DULY LICENSED LAND
SURVEYOR UNDER THE LAWS OF THE STATE OF IOWA.

Steve Busse
STEVE BUSSE

1/9/2012
DATE

LICENSE NUMBER 9018

MY LICENSE RENEWAL DATE IS DECEMBER 31, 2012

PAGES OR SHEETS COVERED BY THIS SEAL 1

G.P. = 2" GAS PIPE
CONC MONU = CONCRETE MONUMENT W/ PIN & ALUM CAP
"X NAILS" = CROSS NAILS IN WOOD POST
OPT = PLASTIC TAG (O=ORANGE, Y=YELLOW)
(00') RECORDED AS

LIST CORNERS TO BE INDEXED

CORNER	SECTION	TOWNSHIP	RANGE
--------	---------	----------	-------

SOUTH 1/4 COR.	32	88	12
----------------	----	----	----