

SC
INDEX
MARGIN
PROOF
COMPARE

BLACK HAWK COUNTY IOWA: SS
Filed for record Jan 21, 19 98 at
4:00 P.M. and recorded in Book 328
of Misc Page 773
Catherine S. Sess Recorder
Fee n/c
ENGINEER'S OFFICE

14242

County Assessor

PREPARED BY: BLACK HAWK COUNTY ENGINEERS OFFICE
316 E. FIFTH STREET, ROOM 211 WATERLOO, IOWA 50703

PH.# (319) 291-2419
FAX# (319) 291-2461
SLSI 9-94
CERT 12-96

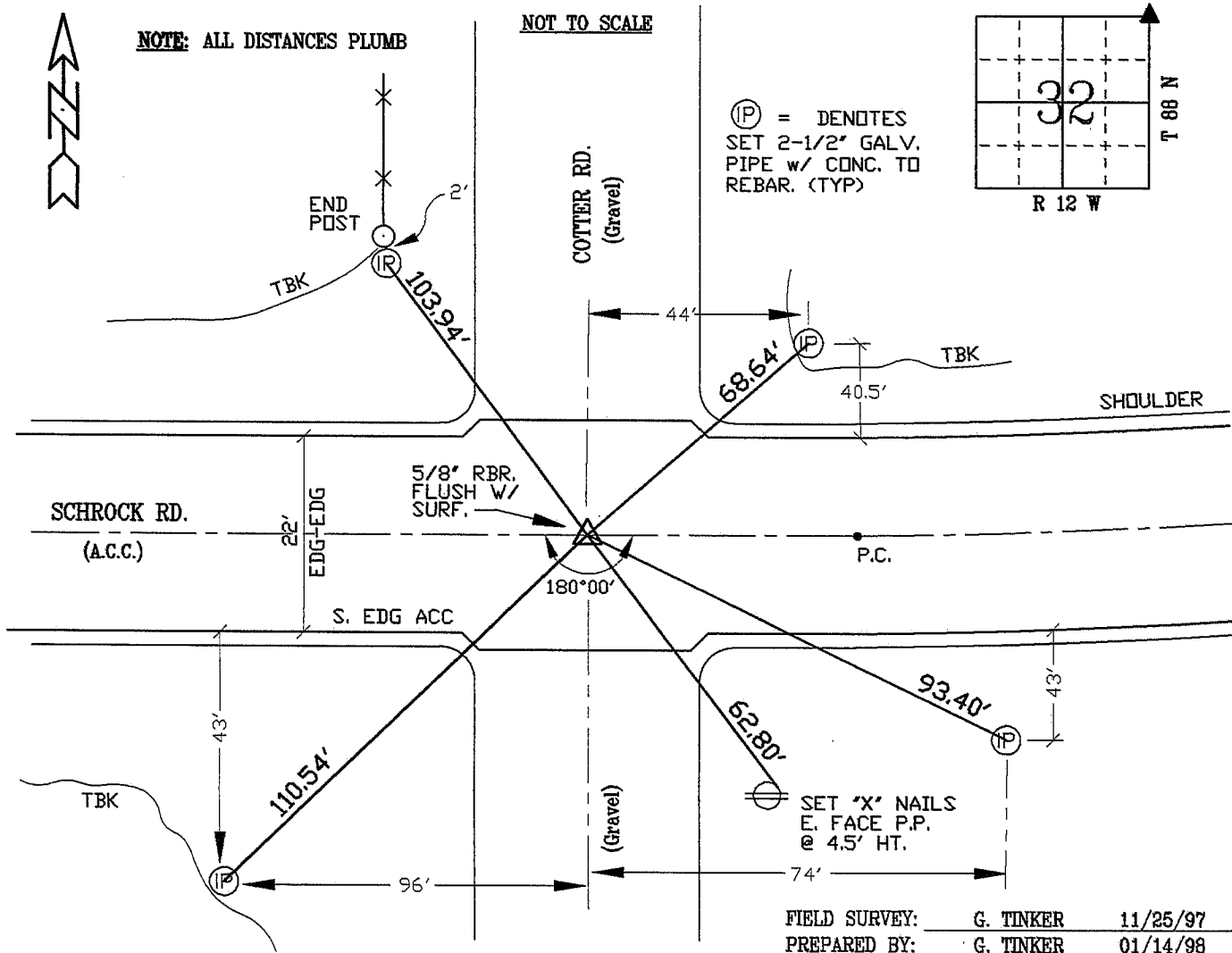
UNITED STATES PUBLIC LAND SURVEY CORNER CERTIFICATE OF
Land Survey Monuments situated in Section 32, Township 88 N,
Range 12 W, of the Fifth Principal Meridian, BLACK HAWK County, Iowa.
Previously recorded in Misc. Book N/A, Page N/A, in County Recorder's Office.

(Show reason for preparing this certificate, the evidence and detailed procedures used in establishing the corner positions and monumentation found or placed.)

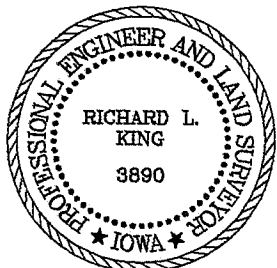
Monument Description and Remarks: FOUND RBR. LOC. 4" DEEP CL INT. OF
SCHROCK AND COTTER ROAD. MONUMENT REPLACED DUE TO A.C.C. PAVING
PROJECT OF 1997, WITH SURFACE LIFT OF +4" GRANULAR AND +9" A.C.C.
OVER EXIST. GRAVEL SURFACE.
FIELD EST. 5/8" REBAR FLUSH WITH A.C.C. SURF. @ C.L. INT. AS DENOTED.

PLAN - VIEW

(Show a minimum of three reference ties to durable physical objects, relevant monuments and physical conditions that will enable recovery of the corner.)



CERTIFICATION



I hereby certify that this land surveying document was prepared and the related survey work was performed by me or under my direct personal supervision and that I am a duly licensed Land Surveyor under the laws of the State of Iowa.

Richard L. King 1/14/98 (date)
Richard L. King
License Number 3890
My license renewal date is December 31, 1999
Pages or sheets covered by this seal:
This Land Corner Certificate Only.

LIST CORNERS TO BE INDEXED

Corner	Section	Township	Range
N.E. COR.	32	88 N	12 W

BOOK 328 PAGE 773