

SC  
INDEX  
MARGIN  
PROOF  
COMPARE

BLACK HAWK COUNTY IOWA: SS  
Filed for record Jan 21, 19 98 at  
4:00 P.M. and recorded in Book 328  
of Misc Page 772  
Recorder  
Fee n/c  
ENGINEER'S OFFICE

14241  
County Assessor

PREPARED BY: BLACK HAWK COUNTY ENGINEERS OFFICE  
316 E. FIFTH STREET, ROOM 211 WATERLOO, IOWA 50703  
PH# (319) 291-2419  
FAX# (319) 291-2461  
SLSI 9-94  
CERT 12-98

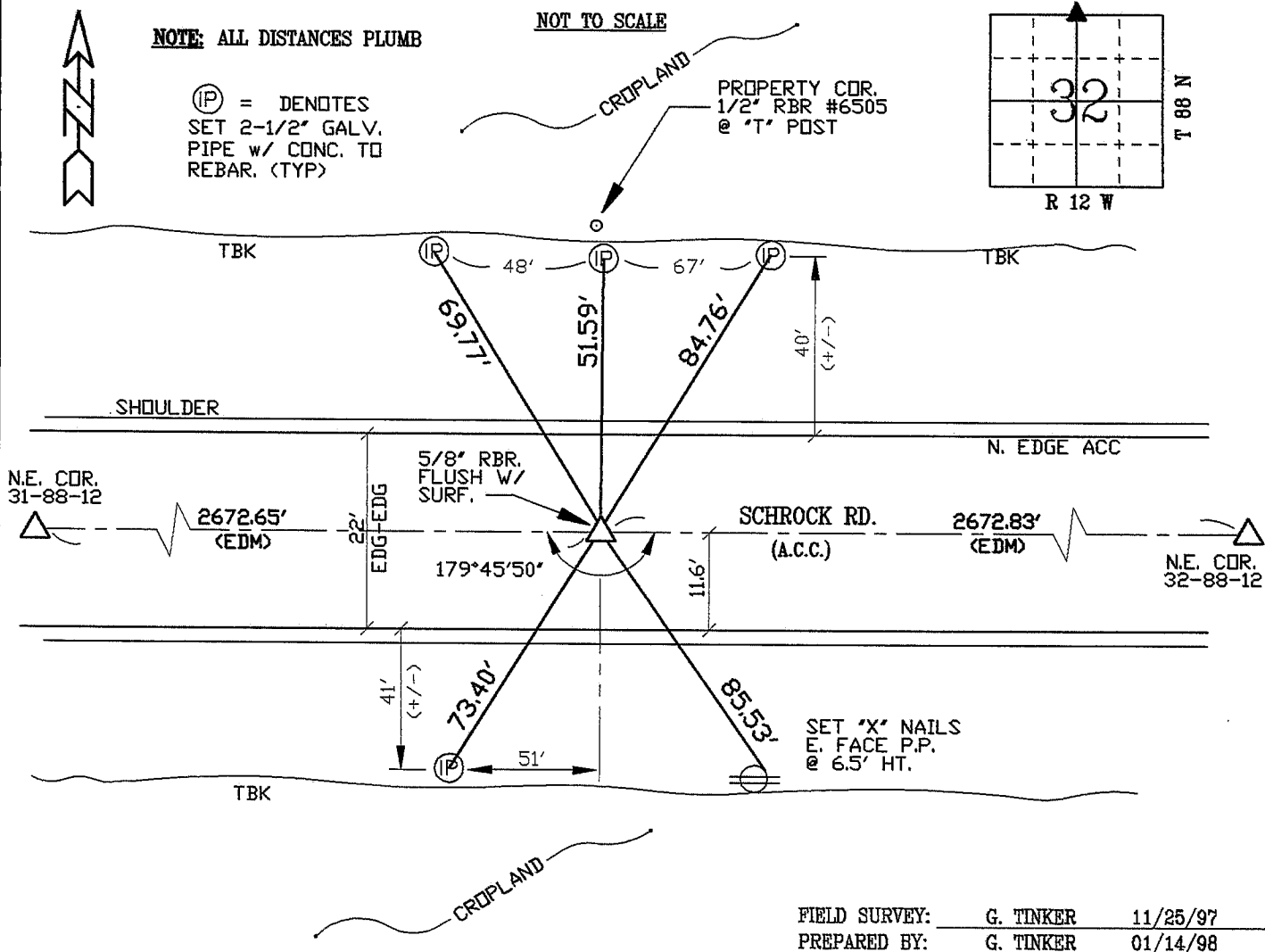
UNITED STATES PUBLIC LAND SURVEY CORNER CERTIFICATE OF  
Land Survey Monuments situated in Section 32, Township 88 N,  
Range 12 W, of the Fifth Principal Meridian, BLACK HAWK County, Iowa.  
Previously recorded in Misc. Book N/A, Page N/A, in County Recorder's Office.

(Show reason for preparing this certificate, the evidence and detailed procedures used in establishing the corner positions and monumentation found or placed.)

Monument Description and Remarks: FOUND RBR. LOC. 2" DEEP CL OF  
SCHROCK ROAD. MONUMENT REPLACED DUE TO A.C.C. PAVING PROJECT OF  
1997, WITH SURFACE LIFT OF +3" GRANULAR AND +9" A.C.C. OVER EXIST.  
GRAVEL SURFACE.  
FIELD EST. 5/8" x 24" L. REBAR FLUSH WITH A.C.C. SURF. @ CL. ROAD  
AS DENOTED.

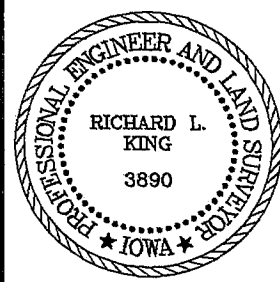
PLAN - VIEW

(Show a minimum of three reference ties to durable physical objects, relevant monuments and physical conditions that will enable recovery of the corner.)



FIELD SURVEY: G. TINKER 11/25/97  
PREPARED BY: G. TINKER 01/14/98

CERTIFICATION



I hereby certify that this land surveying document was prepared and the related survey work was performed by me or under my direct personal supervision and that I am a duly licensed Land Surveyor under the laws of the State of Iowa.  
Richard L. King 1/19/98 (date)  
License Number 3890  
My license renewal date is December 31, 1999  
Pages or sheets covered by this seal:  
This Land Corner Certificate Only.

LIST CORNERS TO BE INDEXED

Corner	Section	Township	Range
N. 1/4	32	88 N	12 W

BOOK 328 PAGE 772