

Prepared by & Return to: Isaiah M. Reicks, HRS, LLC, 2206 East Bremer Avenue, Waverly, IA 50677, Phone 319-483-5187

Land Survey Monument situated in
Section **32**, Township **88** North, Range **12** West of the Fifth Principal Meridian, **Black Hawk** County, Iowa.
Not on file in the County Recorder's Office.

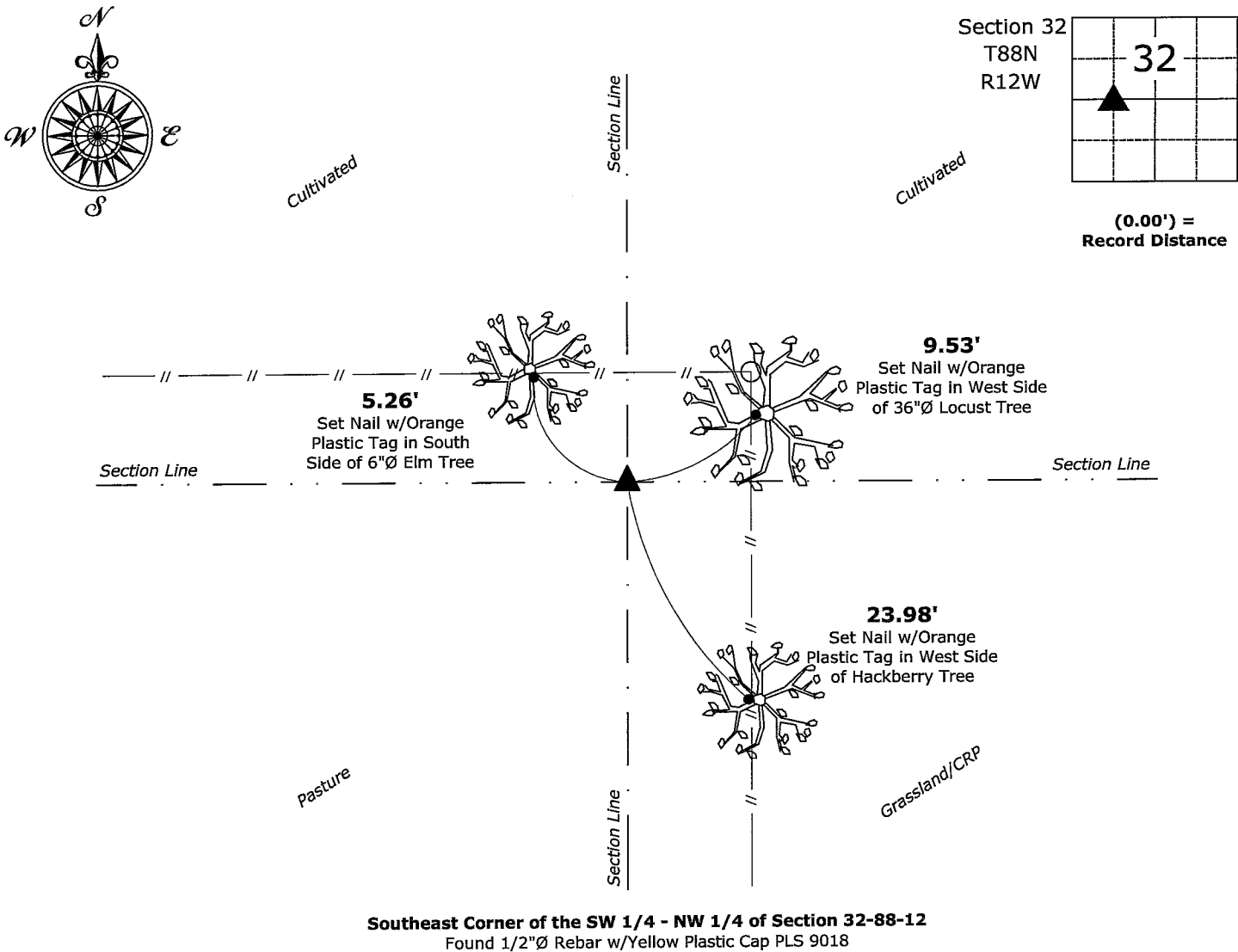
This certificate is being prepared in compliance with Iowa Code Chapter 355.11 because:

- ☒ There is no certificate on file for this corner.
☐ There are no longer three valid ties of record.
☐ There are changes to reference ties of record.
☐ There is change of monumentation of record.
☐ To clarify description of record monument (ties).

Monument Description and Remarks:

Southeast Corner of the SW 1/4 - NW 1/4: Found 1/2"Ø Rebar w/Yellow Plastic Cap PLS 9018 equidistant and on line between the West 1/4 Corner and the Center of said Section with information obtained from Survey and Plat, as recorded in Document #2012-13550, on file in the Black Hawk County Recorder's Office, Waterloo, Iowa.

(Show a minimum of three reference ties to durable physical objects, relevant monuments and physical conditions that will enable recovery of the corner.)



I hereby certify that this land surveying document was prepared and the related survey work was performed by me or under my direct personal supervision and that I am a duly licensed Land Surveyor under the laws of the State of Iowa.

Isaiah M. Reicks 10-31-23
Isaiah M. Reicks Date:

License number 22468

My license renewal date is December 31, 2023.

Sheets covered by this seal: Individual sheet only

List Corner to be Indexed			
Corner	Section	Township	Range
SE-SW-NW	32	88	12

Project Number: 2023-564
FB:Black Hawk 11, Page(s) 26