

I
P
Z

Document Number: 2007005871

Date: Sep 08, 2006 4:30:00 pm

Aud Fee: 0.00 Rec Fee: 5.00

Trans Tax: 0.00 Rec Management Fee 1.00

E-Com Fee: 1.00 Non-Standard Page Fee: 0.00

Filed for record in Black Hawk County, Iowa
Patricia S. Sass, County RecorderWAYNE CLAASSEN ENGINEERING AND SURVEYING, INC.
P.O. BOX 898 WATERLOO, IOWA 50704-0898PHONE: (VOICE) 319-235-6294
(FAX) 319-235-0028

UNITED STATES PUBLIC LAND SURVEY CORNER CERTIFICATE

Land Survey Monuments situated in Section 06
31, Township 87 North
12 West, of the Fifth Principal Meridian, Black Hawk County County, Iowa.
Previously recorded in _____ in County Recorder's Office.
(book, page, document number, etc.)

(Show reason for preparing this certificate, the evidence and detailed procedures used in establishing the corner positions and monumentation found or placed.)

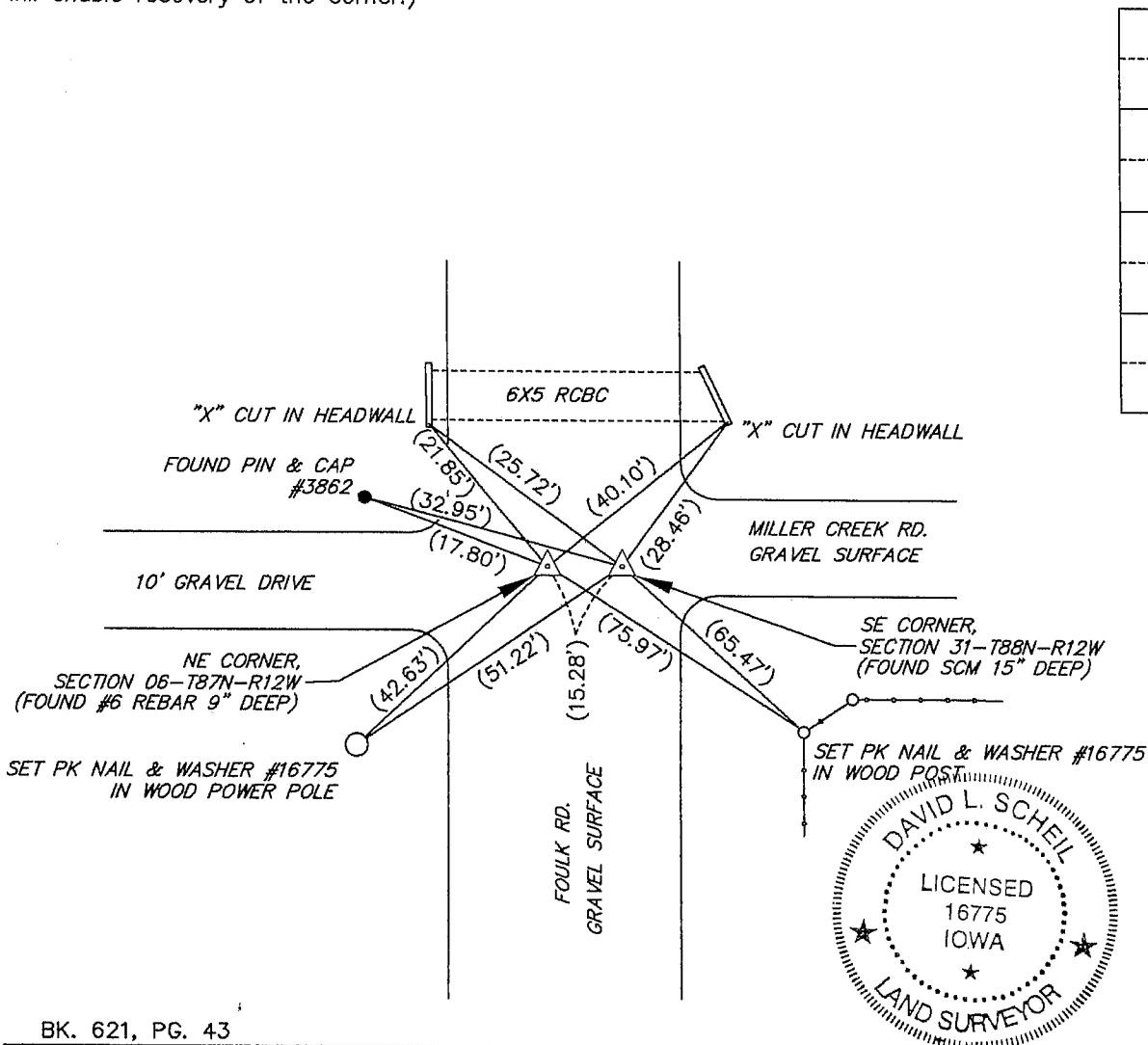
Monument Description and Remarks

NE Corner: no certificate on file. Found #6 rebar 9" deep 15.28' West of the SE corner of Sec. 31 as per Black Hawk County WPA section corner ties and dimensions.

SE Corner: no certificate on file. Found SCM 15" deep 15.28' East of the NE corner of Sec. 06 as per Black Hawk County WPA section corner ties and dimensions. Set pin & red cap #16775 2" deep above SCM.

PLAN - VIEW

(Show a minimum of three reference ties to durable physical objects, relevant monuments and physical conditions that will enable recovery of the corner.)



BK. 621, PG. 43

I hereby certify that this land surveying document was prepared and the related survey work was performed by me or under my direct personal supervision and that I am a duly Licensed Land Surveyor under the laws of the State of Iowa.

Signature: _____

David L. Scheil, L.S.

Date: SEPT. 07, 2006 Lic. No. 16775Pages or Sheets Covered by this Seal: THIS SHEET ONLY.

My license renewal date is December 31, 2006

SEAL

List Corners to be Indexed

Corners	Section	Twp	Range
NE CORNER,	06	87 N	12 W
SE CORNER,	31	88 N	12 W