

I  
P  
Z

Document Number: 2007005865  
 Date: Sep 08, 2006 4:30:00 pm  
 Aud Fee: 0.00 Rec Fee: 5.00  
 Trans Tax: 0.00 Rec Management Fee 1.00  
 E-Com Fee: 1.00 Non-Standard Page Fee: 0.00  
 Filed for record in Black Hawk County, Iowa  
 Patricia S. Sass, County Recorder

WAYNE CLAASSEN ENGINEERING AND SURVEYING, INC.  
 P.O. BOX 898 WATERLOO, IOWA 50704-0898

PHONE: (VOICE) 319-235-6294  
 (FAX) 319-235-0028

# UNITED STATES PUBLIC LAND SURVEY CORNER CERTIFICATE

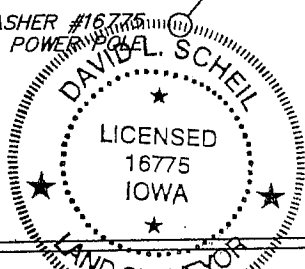
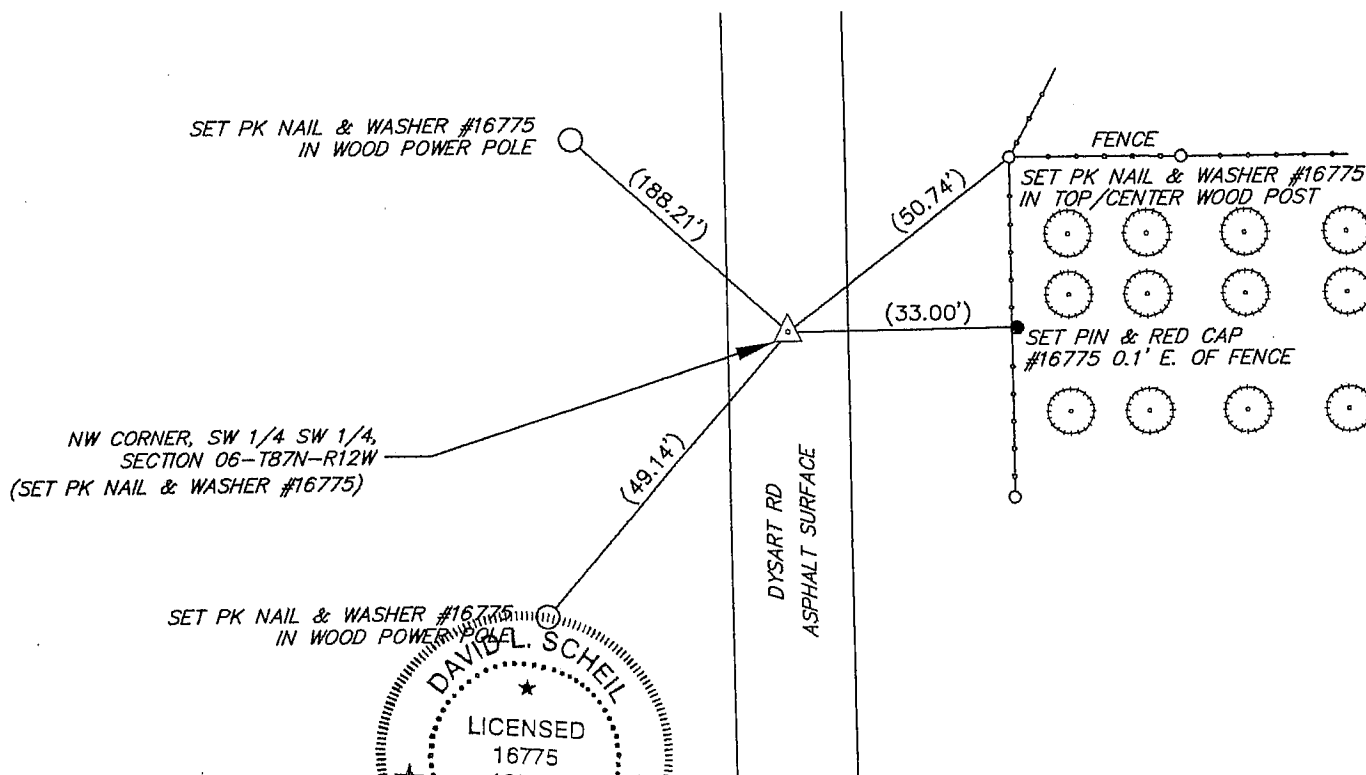
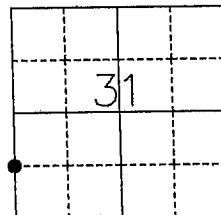
Land Survey Monuments situated in Section 31, Township 88 North, Range 12 West, of the Fifth Principal Meridian, Black Hawk County County, Iowa.  
 Previously recorded in \_\_\_\_\_ in County Recorder's Office.  
 (book, page, document number, etc.)

(Show reason for preparing this certificate, the evidence and detailed procedures used in establishing the corner positions and monumentation found or placed.)

Monument Description and Remarks \_\_\_\_\_  
NW Corner: no certificate on file. Set pk nail & washer #16775 halfway between the SW corner and the W 1/4 corner of Section 31.

## PLAN - VIEW

(Show a minimum of three reference ties to durable physical objects, relevant monuments and physical conditions that will enable recovery of the corner.)



BK. 621, PG. 46

I hereby certify that this land surveying document was prepared and the related survey work was performed by me or under my direct personal supervision and that I am a duly Licensed Land Surveyor under the laws of the State of Iowa.

Signature: David L. Scheil  
 David L. Scheil, L.S.

Date: SEPT. 07, 2006 Lic. No. 16775

Pages or Sheets Covered by this Seal: THIS SHEET ONLY.

My license renewal date is December 31, 2006

SEAL

### List Corners to be Indexed

Corners	Section	Twp	Range
NW CORNER, SW 1/4 SW 1/4,	31	88 N	12 W