

PH.# (319) 291-2419
FAX.# (319) 291-2461

WA 50703

SLSI 9-94
CERT 12-98

ORNER CERTIFICATE OF

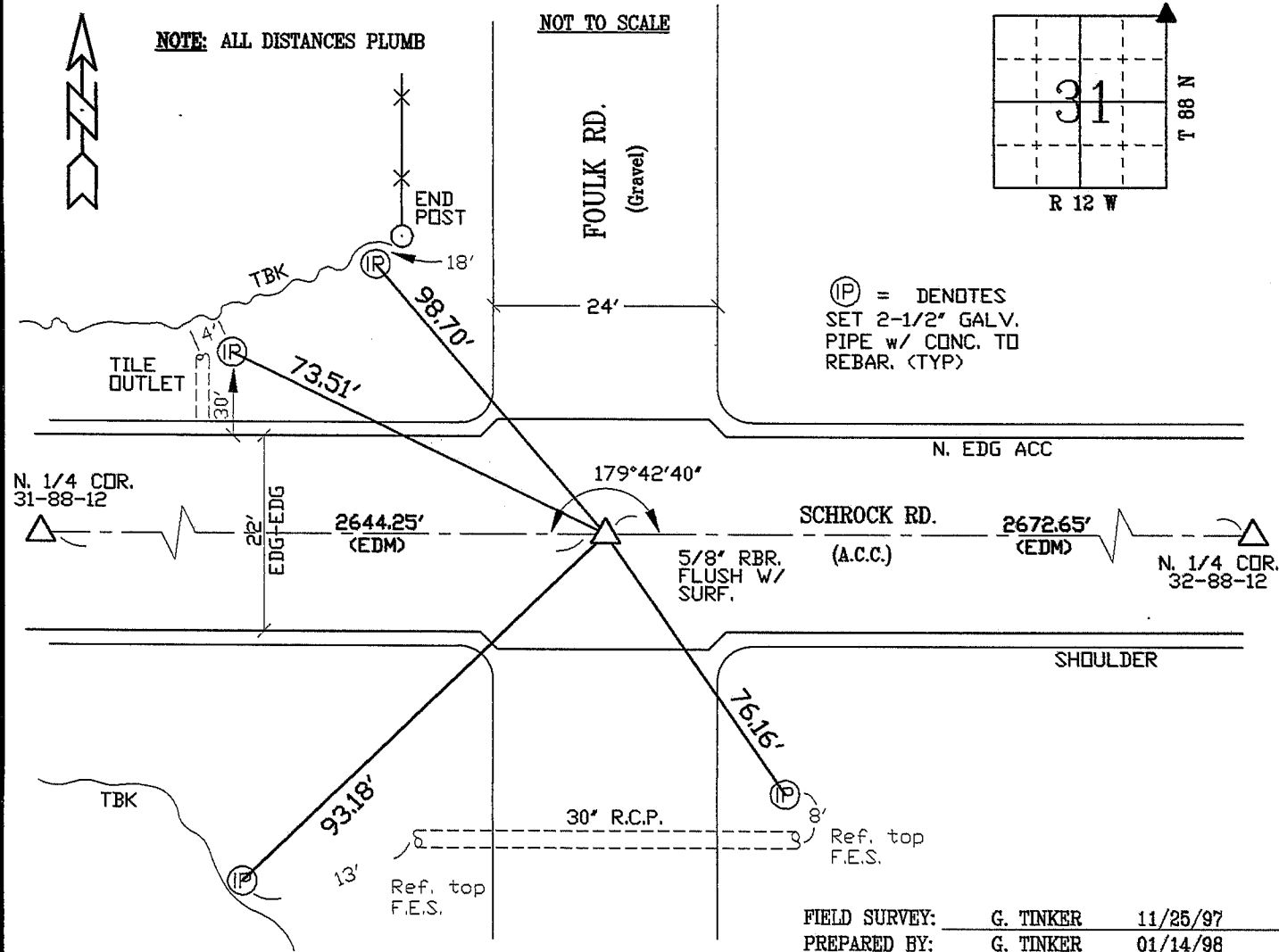
31, Township 88 N, Range 12 W, of the Fifth Principal Meridian, BLACK HAWK County, Iowa. Previously recorded in Misc. Book N/A, Page N/A, in County Recorder's Office.

(Show reason for preparing this certificate, the evidence and detailed procedures used in establishing the corner positions and monumentation found or placed.)

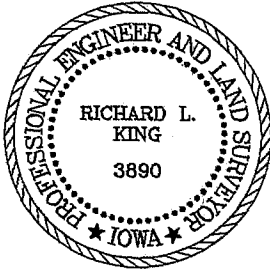
Monument Description and Remarks: FOUND RBR. LOC. 6' DEEP CL INT. OF SCHROCK AND FOULK ROAD. REF. TIED AND PROBED TO FND. C.M. +1.5' DEEP. MONUMENT REPLACED DUE TO A.C.C. PAVING PROJECT OF 1997, WITH SURFACE LIFT OF +3' GRANULAR AND +9' A.C.C. OVER EXIST. GRAVEL SURFACE. FIELD EST. REBAR OVER C.M. 2' BELOW GRANULAR BASE, THEN EST. 5/8" REBAR FLUSH WITH A.C.C. SURF. @ C.L. INT. AS DENOTED.

PLAN - VIEW

(Show a minimum of three reference ties to durable physical objects, relevant monuments and physical conditions that will enable recovery of the corner.)



CERTIFICATION



RICHARD L. KING
3890

I hereby certify that this land surveying document was prepared and the related survey work was performed by me or under my direct personal supervision and that I am a duly licensed Land Surveyor under the laws of the State of Iowa.

Richard L. King 1/19/98
Richard L. King (date)

License Number 3890

My license renewal date is December 31, 1999

Pages or sheets covered by this seal:
This Land Corner Certificate Only.

LIST CORNERS TO BE INDEXED

Corner	Section	Township	Range
N.E. COR.	31	88 N	12 W

BOOK 328 PAGE 771