

SC
INDEXED
MARGIN
PROOF
COMPARE

BLACK HAWK COUNTY IOWA: SS
Filed for record Jan 21, 19 98 at
4:00 P.M. and recorded in Book 328
of Misc Page 770
Recorder
Fee n/c
ENGINEER'S OFFICE

14239

County Assessor

PREPARED BY: BLACK HAWK COUNTY ENGINEERS OFFICE
316 E. FIFTH STREET, ROOM 211 WATERLOO, IOWA 50703

PH.# (319) 291-2419
FAX.# (319) 291-2461
SLSI 9-94
CERT 12-98

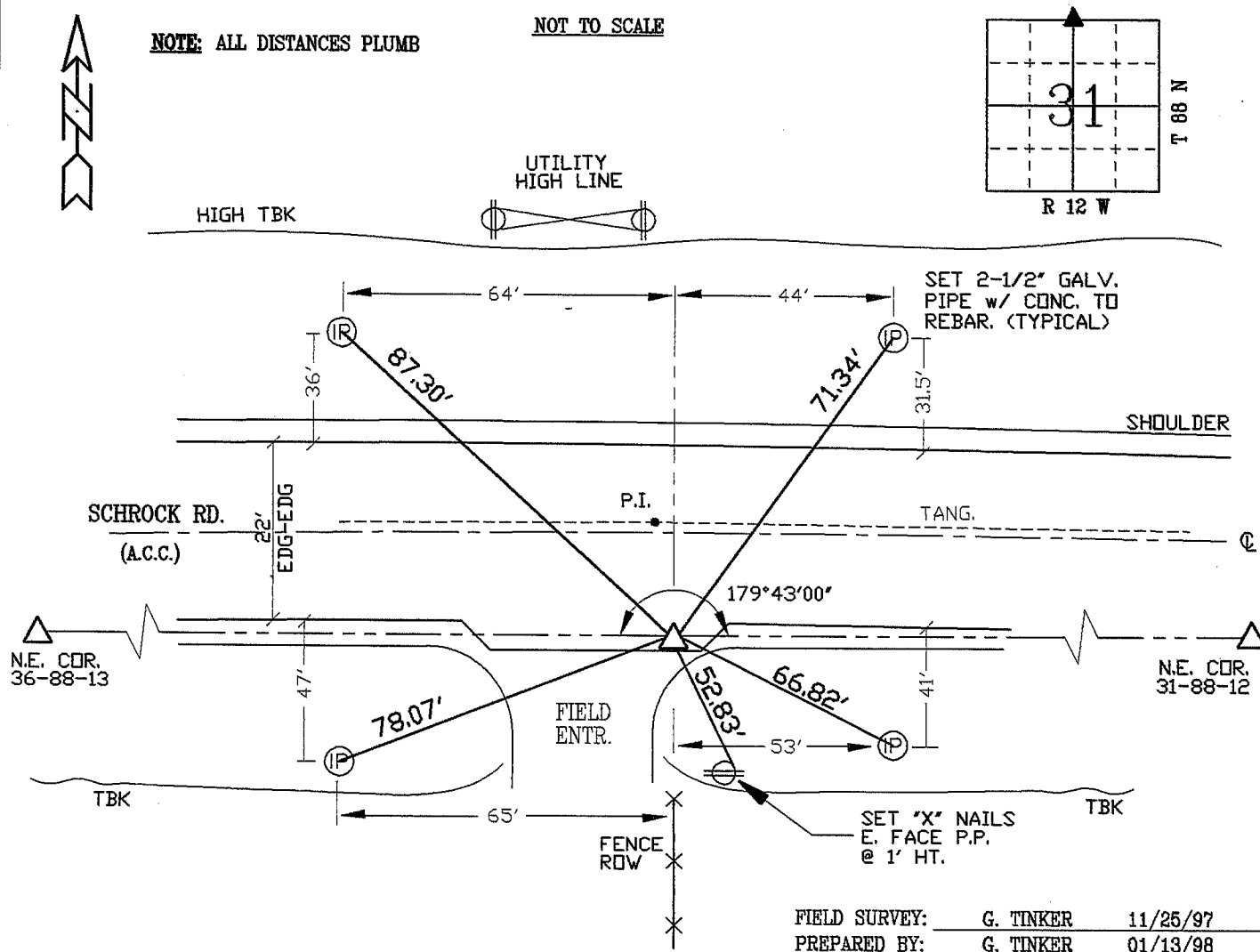
UNITED STATES PUBLIC LAND SURVEY CORNER CERTIFICATE OF
Land Survey Monuments situated in Section 31, Township 88 N,
Range 12 W, of the Fifth Principal Meridian, BLACK HAWK County, Iowa.
Previously recorded in Misc. Book N/A, Page N/A, in County Recorder's Office.

(Show reason for preparing this certificate, the evidence and detailed procedures used in establishing the corner positions and monumentation found or placed.)

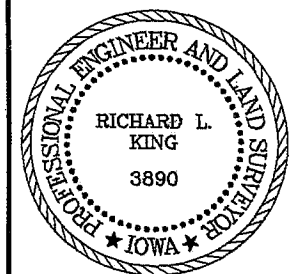
Monument Description and Remarks: FOUND SPIKE, S. EDGE OF RE-ALIGNED
SCHROCK ROAD AFTER 1996 GRADING, LOC. 2' DP., WITH DEFL. ANGLE VERIFIED.
MONUMENT REPLACED DUE TO A.C.C. PAVING PROJECT OF 1997, WITH SURFACE
LIFT OF +3' GRANULAR AND +9" A.C.C. OVER EXIST. GRAVEL SURFACE.
FIELD EST. 5/8" REBAR LOC. IN EASTERLY PORTION OF A.C.C. FILLET SHOWN.
REBAR FLUSH WITH A.C.C. SURF. AS DENOTED.

PLAN - VIEW

(Show a minimum of three reference ties to durable physical objects, relevant monuments and physical conditions that will enable recovery of the corner.)



CERTIFICATION



I hereby certify that this land surveying document was prepared and the related survey work was performed by me or under my direct personal supervision and that I am a duly licensed Land Surveyor under the laws of the State of Iowa.

Richard L. King 1/19/98 (date)

License Number 3890

My license renewal date is December 31, 1999

Pages or sheets covered by this seal:

This Land Corner Certificate Only.

LIST CORNERS TO BE INDEXED

Corner	Section	Township	Range
N. 1/4	31	88 N	12 W

BOOK 328 PAGE 770