

Paul Helland

PAUL HELLAND

Jeffrey P. Helland, 1107 Technology Parkway, Cedar Falls, Iowa 50613-6951, (319)-266-0161

UNITED STATES PUBLIC LAND SURVEY CORNER CERTIFICATE OF

LAND SURVEY MONUMENTS SITUATED IN SECTION NO. 30, TOWNSHIP NO. 88 NORTH, RANGE NO. 12 WEST OF THE FIFTH PRINCIPAL MERIDIAN, BLACK HAWK COUNTY, IOWA.

PREVIOUSLY RECORDED IN _____

(SHOW REASON FOR PREPARING THIS CERTIFICATE, THE EVIDENCE AND DETAILED PROCEDURES USED IN ESTABLISHING THE CORNER POSITIONS AND MONUMENTATION FOUND OR PLACED.)

MONUMENT DESCRIPTION AND REMARKS:

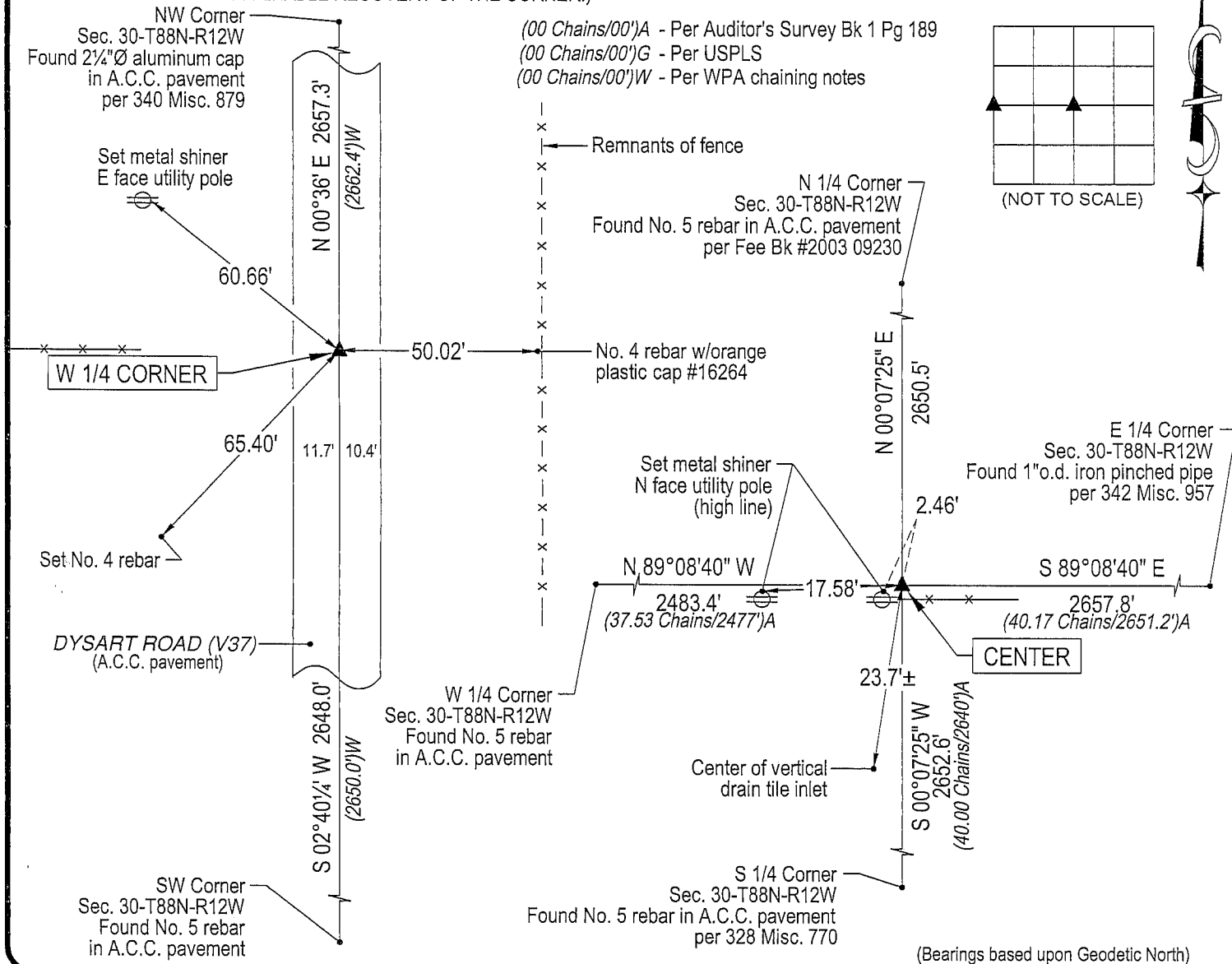
No corner certificates on file. Survey completed in the SWFRL 1/4 of Sec. 30-T88N-R12W.

→ W 1/4 CORNER: Black Hawk County Engineer reference ties obliterated. Found No. 5 rebar in A.C.C. pavement set by Black Hawk County Engineer's office after A.C.C. overlay.

→ CENTER: No Black Hawk County Engineer reference ties exist. Auditor's Survey Book 1 Page 189 dated 5/30/1867 calls for "stone" at Center. Probed 4'± around corner post for stone. No stone found. Set No. 4 rebar w/orange plastic cap #16264 at intersection of 1/4 lines. Corner as established is 1.8'± North and 0.2'± East of said corner post.

PLAN VIEW

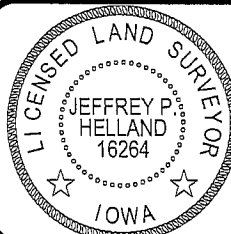
(SHOW A MINIMUM OF THREE REFERENCE TIES TO DURABLE PHYSICAL OBJECTS, RELEVANT MONUMENTS AND PHYSICAL CONDITIONS THAT WILL ENABLE RECOVERY OF THE CORNER.)



HELLAND ENGINEERING & SURVEYING, LTD.
1107 Technology Parkway
Cedar Falls, Iowa 50613-6951
(319)-266-0161

(00') Recorded As

File Name: 05-108c2.dwg



I hereby certify that this land surveying document was prepared and the related survey work was performed by me or under my direct personal supervision and that I am a duly licensed Land Surveyor under the laws of the State of Iowa.

Jeffrey P. Helland 2/14/05
Jeffrey P. Helland
License Number 16264
My license renewal date is December 31, 2005.
All pages or sheets are covered by this seal except:

LIST CORNERS TO BE INDEXED

CORNER	SECTION	TOWNSHIP	RANGE
W 1/4 CORNER	30	88N	12W
CENTER	30	88N	12W

Rec.