



Doc ID: 011871370001 Type: GEN
Recorded: 11/29/2022 at 10:57:18 AM
Fee Amt: \$7.00 Page 1 of 1
Black Hawk County Iowa
SANDIE L. SMITH RECORDER

File 2023-00008346

Reserved for County Recorder's use.

Jeffrey P. Helland, 6109 Chancellor Drive, Cedar Falls, Iowa 50613-6916, (319)-266-0161

UNITED STATES PUBLIC LAND SURVEY CORNER CERTIFICATE OF

LAND SURVEY MONUMENTS SITUATED IN SECTION NO. 30, TOWNSHIP NO. 88 NORTH, RANGE
NO. 12 WEST OF THE FIFTH PRINCIPAL MERIDIAN, BLACK HAWK COUNTY, IOWA.
PREVIOUSLY RECORDED IN N/A

(SHOW REASON FOR PREPARING THIS CERTIFICATE, THE EVIDENCE AND DETAILED PROCEDURES USED IN ESTABLISHING THE
CORNER POSITIONS AND MONUMENTATION FOUND OR PLACED.)

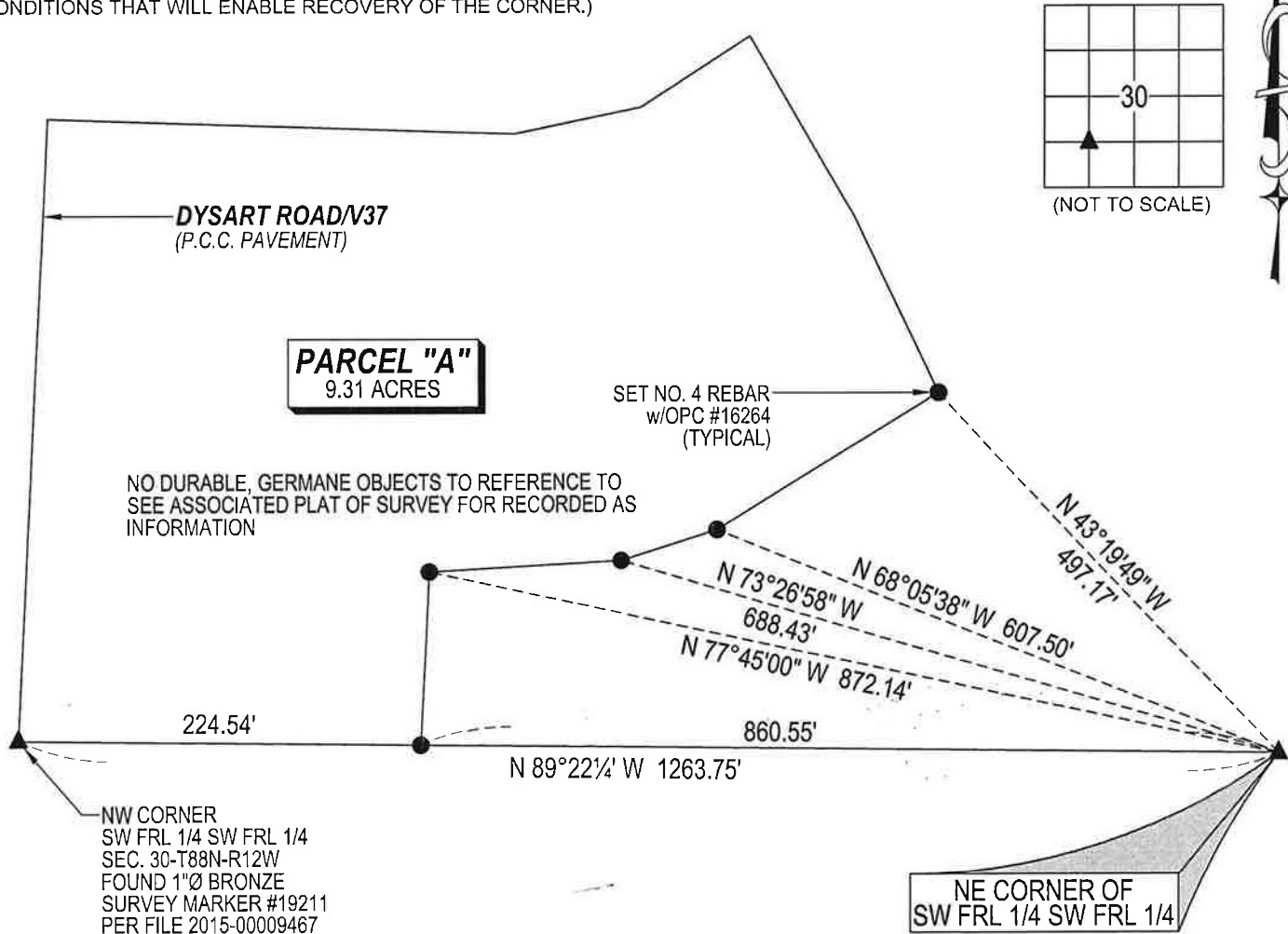
MONUMENT DESCRIPTION AND REMARKS:

NO USPLSCC ON FILE. SURVEY COMPLETED IN THE NW FRL 1/4 OF THE SW FRL 1/4 OF SEC. 30-T88N-R12W.

→ NE CORNER OF SW FRL 1/4 SW FRL 1/4: PLAT OF SURVEY RECORDED IN FEE BOOK #2005-19148 DATED 02/11/2005
CALLS FOR [SET NO. 4 REBAR WITH LICENSE #16264]. SEARCHED AREA WITH MAGNETIC DETECTOR AND FOUND NO. 4
REBAR w/OPC #16264 BENT IN CULTIVATED FIELD, STRAIGHTENED. UTILIZED SAID FOUND NO. 4 REBAR w/OPC #16264
AS CORNER.

PLAN VIEW

(SHOW A MINIMUM OF THREE REFERENCE TIES TO DURABLE PHYSICAL OBJECTS, RELEVANT MONUMENTS AND PHYSICAL
CONDITIONS THAT WILL ENABLE RECOVERY OF THE CORNER.)



(BEARINGS ARE ASSUMED)



HELLAND ENGINEERING & SURVEYING, LTD.
6109 Chancellor Drive
Cedar Falls, Iowa 50613-6916
(319)-266-0161

SHINER = 4d. NAIL & 1 5/16\"Ø METAL SHINER DRAWN BY: CDR
BRASS TAG = 4d. NAIL & 13/16\"Ø BRASS TAG
OPC = PLASTIC CAP (O=ORANGE, R=RED, Y=YELLOW)
(00') RECORDED AS FILE NAME: 22-252-55.DWG



I hereby certify that this land surveying document was prepared
and the related survey work was performed by me or under my
direct personal supervision and that I am a duly licensed
Professional Land Surveyor under the laws of the State of Iowa.
Jeffrey P. Helland 11/29/2022
License Number 16264
My license renewal date is December 31, 2023.
All pages or sheets are covered by this seal except:

LIST CORNERS TO BE INDEXED

CORNER	SECTION	TOWNSHIP	RANGE
NE COR. SW FRL 1/4 SW FRL 1/4	30	88N	12W
SE COR. NW FRL 1/4 SW FRL 1/4	30	88N	12W
SW COR. NE 1/4 SW FRL 1/4	30	88N	12W
NW COR. SE 1/4 SW FRL 1/4	30	88N	12W