

*Jeffrey P. Helland*

Jeffrey P. Helland, 1107 Technology Parkway, Cedar Falls, Iowa 50613-6951, (319)-266-0161

# UNITED STATES PUBLIC LAND SURVEY CORNER CERTIFICATE OF

LAND SURVEY MONUMENTS SITUATED IN SECTION NO. 30, TOWNSHIP NO. 88 NORTH, RANGE NO. 12 WEST OF THE FIFTH PRINCIPAL MERIDIAN, BLACK HAWK COUNTY, IOWA.

PREVIOUSLY RECORDED IN \_\_\_\_\_

(SHOW REASON FOR PREPARING THIS CERTIFICATE, THE EVIDENCE AND DETAILED PROCEDURES USED IN ESTABLISHING THE CORNER POSITIONS AND MONUMENTATION FOUND OR PLACED.)

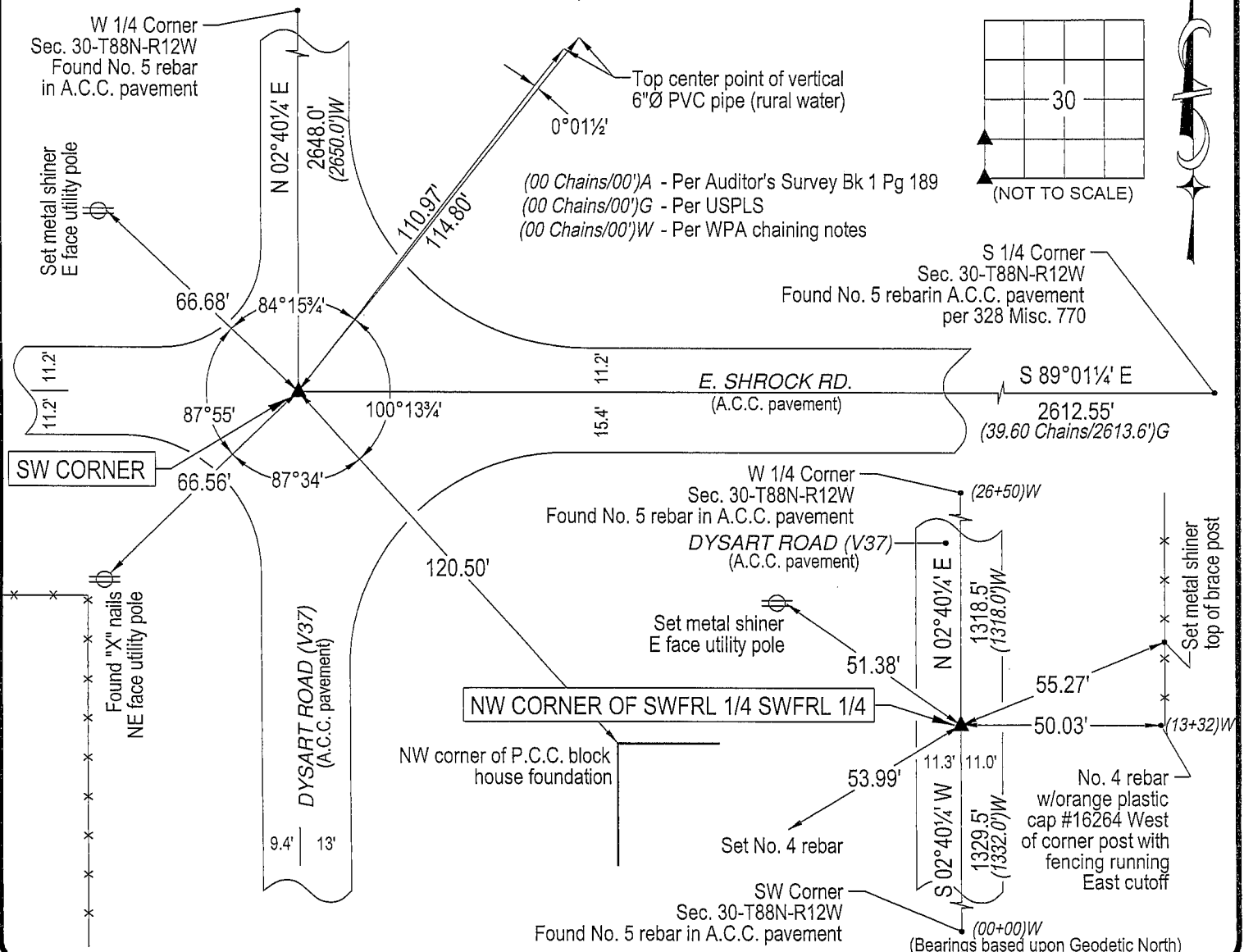
## MONUMENT DESCRIPTION AND REMARKS:

No corner certificates on file. Survey completed in the SWFRL 1/4 of Sec. 30-T88N-R12W.

- SW CORNER: Black Hawk County Engineer reference ties obliterated. Found No. 5 rebar in A.C.C. pavement set by Black Hawk County Engineer's office after A.C.C. overlay.
- NW CORNER of SWFRL 1/4 SWFRL 1/4: No Black Hawk County Engineer reference ties exist. W.P.A. chaining notes (no date) indicate 1/4 1/4 fences East & West at Sta. 13+32. Fence running West has been removed. Fence running East (removed fall of 2004) is in same position as W.P.A. chaining notes. Set "mag" nail in A.C.C. pavement on line between the SW Corner & W 1/4 Corner and in line w/fence running East.

## PLAN VIEW

(SHOW A MINIMUM OF THREE REFERENCE TIES TO DURABLE PHYSICAL OBJECTS, RELEVANT MONUMENTS AND PHYSICAL CONDITIONS THAT WILL ENABLE RECOVERY OF THE CORNER.)

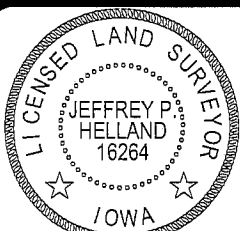


HELLAND ENGINEERING & SURVEYING, LTD.

1107 Technology Parkway  
Cedar Falls, Iowa 50613-6951  
(319)-266-0161

(00') Recorded As

File Name: 05-108c1.dwg



I hereby certify that this land surveying document was prepared and the related survey work was performed by me or under my direct personal supervision and that I am a duly licensed Land Surveyor under the laws of the State of Iowa.

*Jeffrey P. Helland* 2/14/05

Jeffrey P. Helland  
License Number 16264

My license renewal date is December 31, 2005.

All pages or sheets are covered by this seal except:

## LIST CORNERS TO BE INDEXED

CORNER	SECTION	TOWNSHIP	RANGE
SW CORNER	30	88N	12W
NW CORNER	30	88N	12W
SWFRL 1/4 SWFRL 1/4			