

INDEX  
MARGIN  
PROOF  
COMPARE

BLACK HAWK COUNTY IOWA: ss **027387**  
Filed for record JUN 20, 2001, at  
4:00 P.M. and recorded in Book 342  
of MISC Page 957  
*Paul H. Helland* Recorder  
Fee 1-5.00/  
HELLAND ENGINEERING & SURVEYING LTD

Paul H. Helland, 1107 Technology Parkway, Cedar Falls, Iowa 50613-6951, (319)-266-0161

## UNITED STATES PUBLIC LAND SURVEY CORNER CERTIFICATE OF

LAND SURVEY MONUMENTS SITUATED IN SECTION NO. 29, TOWNSHIP NO. 88 NORTH, RANGE  
NO. 12 WEST OF THE FIFTH PRINCIPAL MERIDIAN, BLACK HAWK COUNTY, IOWA.

PREVIOUSLY RECORDED IN BOOK \_\_\_\_\_, PAGE \_\_\_\_\_.

(SHOW REASON FOR PREPARING THIS CERTIFICATE, THE EVIDENCE AND DETAILED PROCEDURES USED IN ESTABLISHING THE  
CORNER POSITIONS AND MONUMENTATION FOUND OR PLACED.)

MONUMENT DESCRIPTION AND REMARKS:

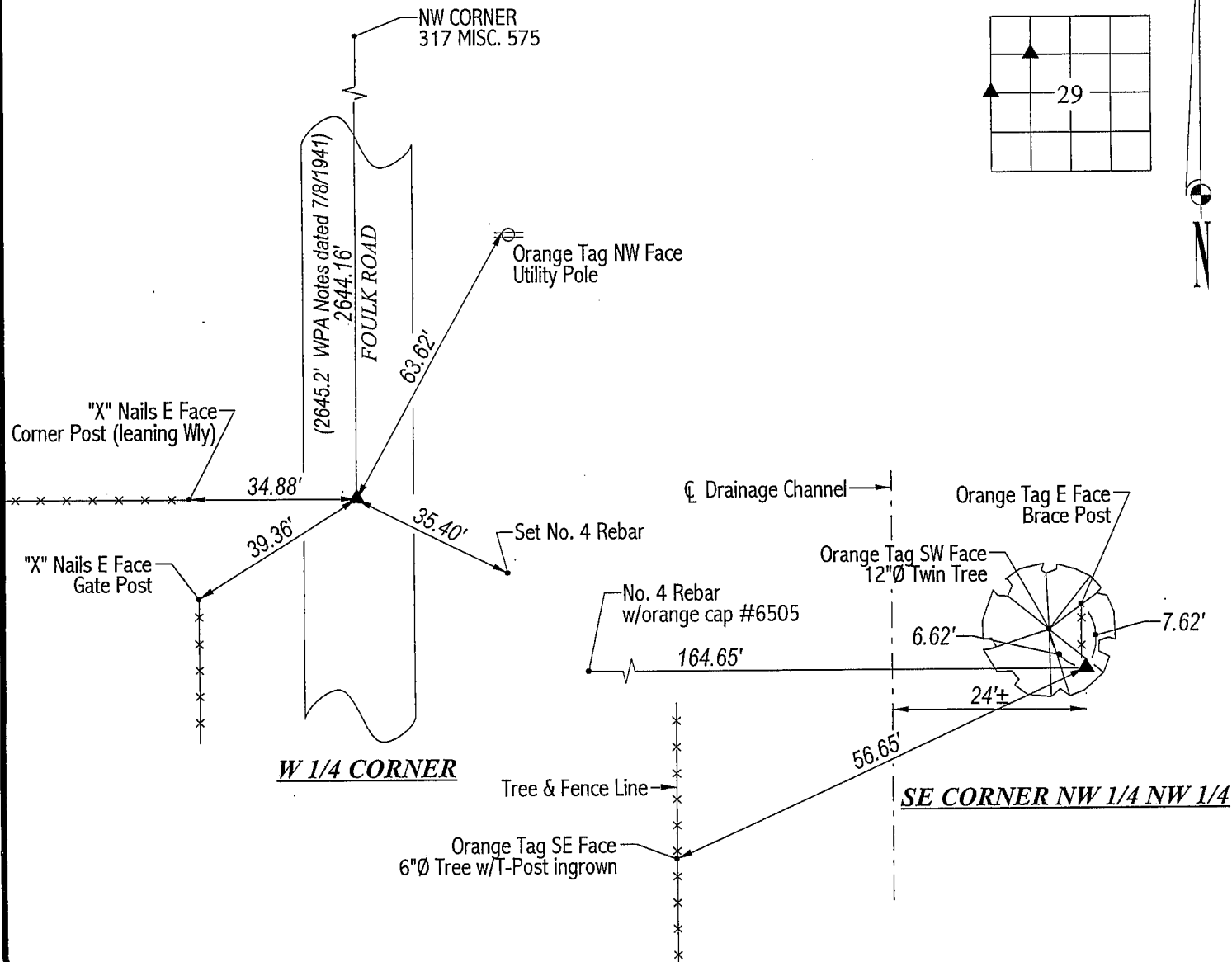
SURVEY DONE IN NW 1/4 NW 1/4 OF SEC. 29-T88N-R12W.

W 1/4 CORNER: Found pinched pipe 0.2' deep per county reference ties dated 1957. Two of original reference ties remain,  
corner post to the West and gate post to the Southwest. Top of pinched pipe is mutilated and bent slightly Southerly, straightened.  
Also found bent 60d nail w/orange flagging near pipe.

SE CORNER OF NW 1/4 NW 1/4: Found No. 4 rebar w/orange cap #6505. Corner was set on 1/2/1992 @ midpoint of East line  
of NW 1/4.

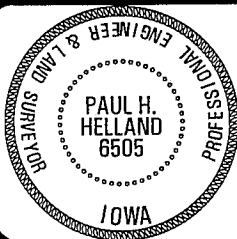
### PLAN VIEW

(SHOW A MINIMUM OF THREE REFERENCE TIES TO DURABLE PHYSICAL OBJECTS, RELEVANT MONUMENTS AND PHYSICAL  
CONDITIONS THAT WILL ENABLE RECOVERY OF THE CORNER.)



HELLAND ENGINEERING & SURVEYING, LTD.  
1107 Technology Parkway  
Cedar Falls, Iowa 50613-6951  
(319)-266-0161

FILE NAME: 01-199CC.DRG



I hereby certify that this land surveying document was prepared  
and the related survey work was performed by me or under my  
direct personal supervision and that I am a duly licensed Land  
Surveyor under the laws of the State of Iowa.

*Paul H. Helland*  
Paul H. Helland  
License Number 6505  
My license renewal date is December 31, 2001.  
All pages or sheets are covered by this seal except:

LIST CORNERS TO BE INDEXED			
CORNER	SECTION	TOWNSHIP	RANGE
W 1/4 CORNER	29	88N	12W
SE CORNER	29	88N	12W
NW 1/4 NW 1/4			