

SLSI 9-94  
BHCO 03-09

(Show reason for preparing this certificate): The corner monument has been Replaced or Modified, per Ia. Code 355.11(1)(c)  
(Evidence and detailed procedures used in establishing the corner position(s) and monumentation found or placed.)

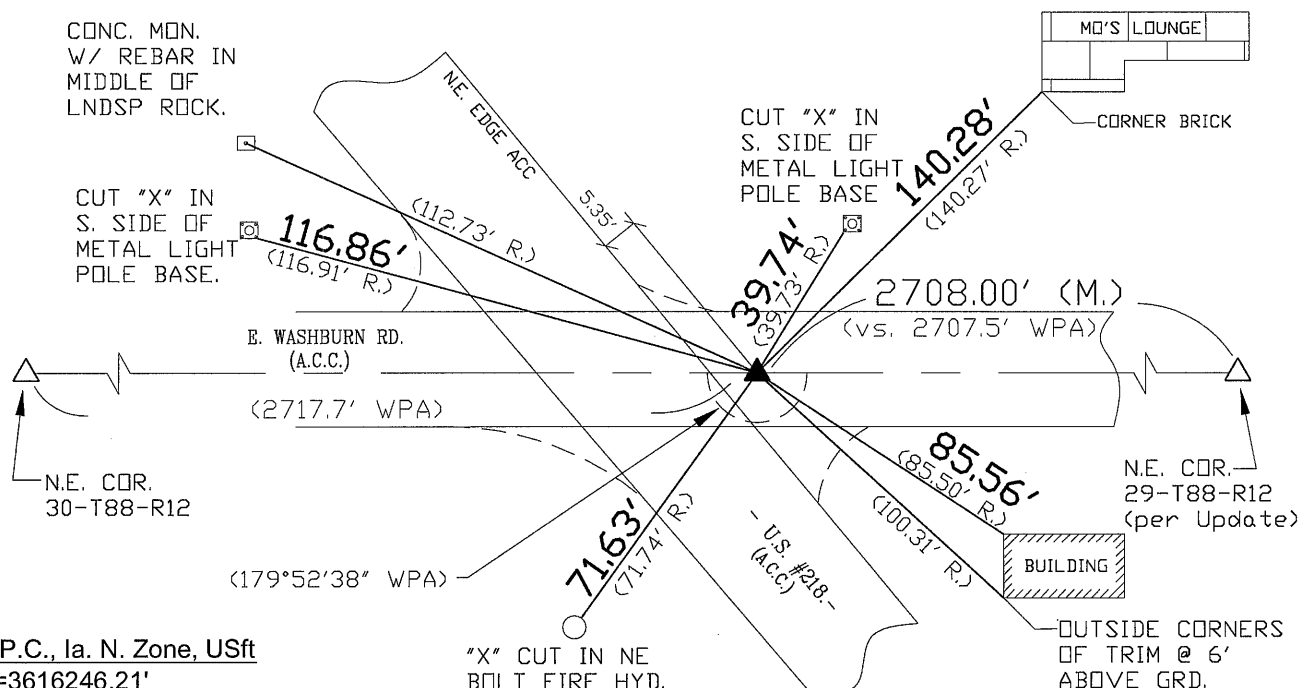
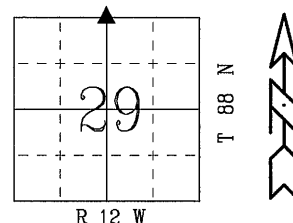
Monument Description and Remarks: N. 1/4 COR. FOUND 5/8" REBAR (vs. CURRENT RECORD 1/2") PRIOR TO HMA SURF. PROJECT, WITH CURRENT CORNER TIES VERIFIED. MILLED 2" EXIST. ACC PVMT. & RESURF. WITH 2" HMA PVMT., THEN DRILLED 6"Ø CORE TO ± 6" DEEP. CLEANED HOLE TO FIND TWO 3/8"Ø SMOOTH SPIKES LOCATED (SIDE-BY-SIDE, WITH MILLED TOPS) @ RTK REF. LOCATION. PULLED FND. SPIKES, WITH MAGNETIC SOUNDING REMAINING IN CORE HOLE, THEN RESET ± 10" L. x #5 REBAR WITH 2" ALUM. CAP AT REF. LOCATION. RESET CORNER LOCATED @ ± C.L. HMA JOINT E-W & 5.35' W. OF EASTERLY EDGE HWY. 218. IN ADDITION, ALSO LOCATED ±5.5' "WEST" OF CORNER IS ADDITIONAL MAGNETIC SOUNDING (NOT EXCAV.), ASSUMING "P.K." REFERENCE FROM PREV. RECORD (353').

"NOT TO SCALE"

FIELD BOOK: BHco. #489 pp. 3-6

(Show a minimum of three reference ties to durable physical objects, relevant monuments and physical conditions that will enable recovery of the corner.)

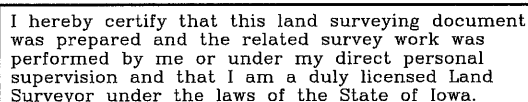
- |   |  |
|---|--|
| 1.) TIES PER EDM MEASURE IN EITHER PRISM "OR" NON-PRISM MODE, WHILE UTILIZING "DIRECT" MEASURE, WITH ALL DISTANCES PLUMB/HORIZ. (HD), UNLESS DENOTED. | 2.) SECTION LINE MEASURE REFERS TO "LOCAL GROUND" DIST. AND INCLUDES ELLIPSOIDAL (COMBINED) SCALE FACTOR FROM S.P.C. GRID INVERSE (AS OBSERVED, PER AVG. SCALE FACTOR = 1.0000823320405) |
|---|--|



S.P.C., Ia. N. Zone, USft  
N=3616246.21'  
E=5253650.33'  
(NAD83-2007 "BHco07". RTK Obs.)

FIELD SURVEY: G.T. & J.Z. 06/16/09  
PREPARED BY: G.T. & T.K. 08/11/10

## LIST CORNERS TO BE INDEXED



*Geoffrey Allen Tinker* 10/29/2010  
Geoffrey Allen Tinker (date)

License Number 15748

My license renewal date is December 31, 2010

Pages or sheets covered by this seal:  
This Land Corner Certificate Only.

<u>Corner</u>	<u>Section -</u>	<u>Township -</u>	<u>Range</u>
N. 1/4 Cor.	29	88 N	12 W
S. 1/4 Cor.	20	88 N	12 W

## INDEX OF ABBREVIATIONS

(M) = "Measured" Dimension      "NP" = Reflectorless EDM Meas.  
(P) = "Platted" Dimension      "MLM" = Indirect Measure  
(R) = "Record" Dimension      "CM" = Concrete Monument  
(C) = "Calculated" Dimension      "SM" = Survey Marker Spike/Tag  
(GS) = Iowa Geodetic Survey      "PK" = PK/MAG Nail Brand Style  
(WPA) = Works Progress Admin. Survey  
"Φ" = per George Miller Survey (BHC Surveyor 1858-1860)  
"S" = per John Ball Survey (BHC Surveyor 1866-1891)  
"N" = per Nathan Barber Survey (BHC Surveyor 1908-1931)