

PROOF FILED FOR RECORD MAY 9 2002 AT 4:00 P.M. FEE N/C

COMPARED

*Richard L. King*

BLACK HAWK COUNTY RECORDER

BLACK HAWK COUNTY ENGINEERS

PREPARED BY: BLACK HAWK COUNTY ENGINEERS OFFICE  
316 E. FIFTH STREET, ROOM 211 WATERLOO, IOWA 50703PH.# (319) 833-3008  
FAX.# (319) 833-3139SLSI 9-94  
CERT 12-96

UNITED STATES PUBLIC LAND SURVEY CORNER CERTIFICATE OF  
Land Survey Monuments situated in Section 28, Township 88 N,  
Range 12 W, of the Fifth Principal Meridian, BLACK HAWK County, Iowa.  
Previously recorded in Misc. Book N/A, Page N/A, in County Recorder's Office.

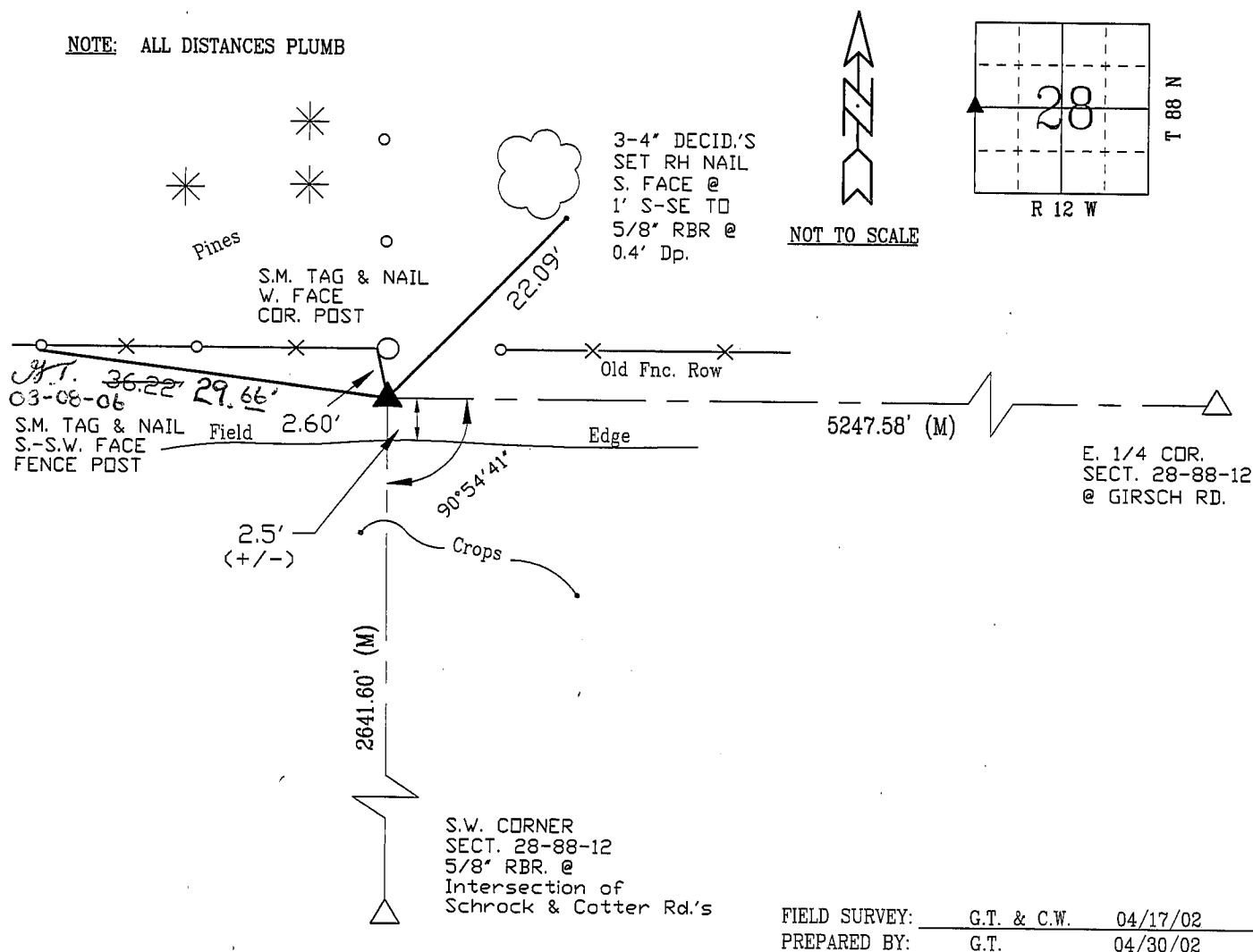
(Show reason for preparing this certificate, the evidence and detailed procedures used in establishing the corner positions and monumentation found or placed.)

Monument Description and Remarks: FOUND STANDARD WPA CONC. MONUMENT  
LOCATED JUST SOUTH OF FENCE INTERSECTION, AT 2" DEEP STAMPED 29+28  
RECOVERED TO EST. WEST LINE OF SAID SECTION FOR SURVEY IN S.W. 1/4  
OF THE S.W. 1/4 BEING S.W. OF STATE HIGHWAY 218.  
ALL LAND CORNER REFERENCE TIES FROM RTK GPS ON ASSUMED LOCAL  
GROUND PLANE.

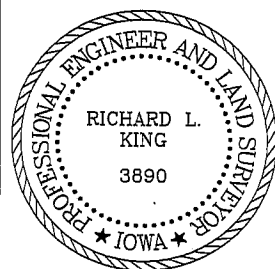
## PLAN - VIEW

(Show a minimum of three reference ties to durable physical objects, relevant monuments and physical conditions that will enable recovery of the corner.)

NOTE: ALL DISTANCES PLUMB



## CERTIFICATION



I hereby certify that this land surveying document was prepared and the related survey work was performed by me or under my direct personal supervision and that I am a duly licensed Land Surveyor under the laws of the State of Iowa.

*Richard L. King* 7/6/02  
Richard L. King (date)

License Number 3890

My license renewal date is December 31, 2003

Pages or sheets covered by this seal:

This Land Corner Certificate Only.

## LIST CORNERS TO BE INDEXED

Corner	Section	Township	Range
W. 1/4	28	88 N	12 W
E. 1/4	29	88 N	12 W