

\*  
Paul H. Helland, 1107 Technology Parkway, Cedar Falls, Iowa 50613-6951, (319)-266-0161

UNITED STATES PUBLIC LAND SURVEY CORNER CERTIFICATE  
OF

LAND SURVEY MONUMENTS SITUATED IN SECTION NO. 28, TOWNSHIP NO. 88 NORTH, RANGE  
NO. 12 WEST OF THE FIFTH PRINCIPAL MERIDIAN, BLACK HAWK COUNTY, IOWA.  
PREVIOUSLY RECORDED IN FEE BK#2006 22622

(SHOW REASON FOR PREPARING THIS CERTIFICATE, THE EVIDENCE AND DETAILED PROCEDURES USED IN ESTABLISHING THE  
CORNER POSITIONS AND MONUMENTATION FOUND OR PLACED.)

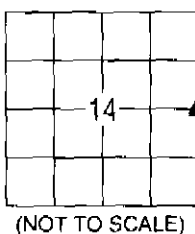
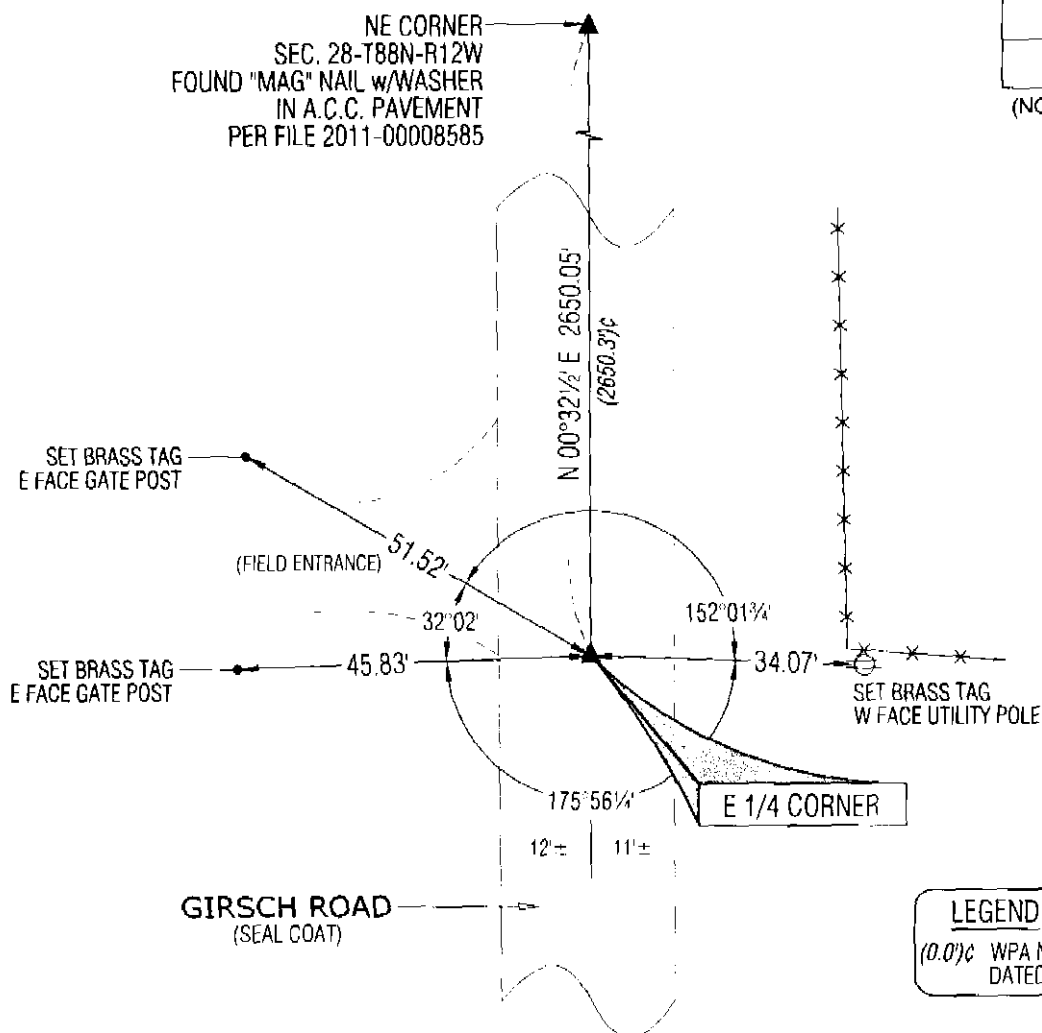
MONUMENT DESCRIPTION AND REMARKS:

MONUMENTATION AND POSITION HAS CHANGED. SURVEY COMPLETED IN THE NE 1/4 OF SEC. 28-T88N-R12W.

- **E 1/4 CORNER:** WPA NOTED DATED 7/17/1941 CALLS FOR [STANDARD CONCRETE MONUMENT]. USPLSCC DATED  
3/20/2006 CALLS FOR [FOUND LARGE STONE WITH 1.5 INCH OPEN PIPE ALONG THE WEST FACE. STONE IS 0.4 FEET BELOW  
ASPHALT SURFACE OF GIRSCH ROAD]. FOUND CONCRETE MONUMENT 0.4'± DEEP, TOP BROKEN OFF WITH NO BRASS CAP,  
AND OPEN PIPE ON WEST SIDE PER PREVIOUS USPLSCC, SET COTTON GIN SPIKE ABOVE SAID CONCRETE MONUMENT IN  
APPROX. CENTER OF SEAL COAT ROAD AND UTILIZED AS CORNER.

PLAN VIEW

(SHOW A MINIMUM OF THREE REFERENCE TIES TO DURABLE PHYSICAL OBJECTS, RELEVANT MONUMENTS AND PHYSICAL  
CONDITIONS THAT WILL ENABLE RECOVERY OF THE CORNER.)



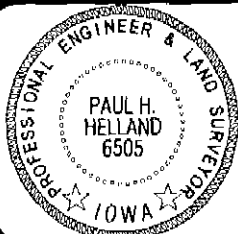
LEGEND  
(0.0)'c WPA NOTES BK PGS 75-76  
DATED 7/17/41

(BEARINGS ARE ASSUMED)



HELLAND ENGINEERING & SURVEYING, LTD.  
1107 Technology Parkway  
Cedar Falls, Iowa 50613-6951  
(319)-266-0161

SHINER = 8D NAIL & 1 5/16"Ø METAL SHINER  
BRASS TAG = 8D NAIL & 13/16"Ø BRASS TAG  
OPC = PLASTIC CAP (O=ORANGE, R=RED, Y=YELLOW)  
(00) RECORDED AS FILE NAME: 12-215-22.DWG



I hereby certify that this land surveying document was prepared  
and the related survey work was performed by me or under my  
direct personal supervision and that I am a duly licensed Land  
Surveyor under the laws of the State of Iowa.

Paul H. Helland  
License Number 6505  
My license renewal date is December 31, 2013.  
All pages or sheets are covered by this seal except:

LIST CORNERS TO BE INDEXED

CORNER	SECTION	TOWNSHIP	RANGE
E 1/4 CORNER	28	88N	12W
W 1/4 CORNER	27	88N	12W

File Number: 2013-00007291 Seq: 1