

Patrick S. Sch

KESS & ASSOCIATES INC

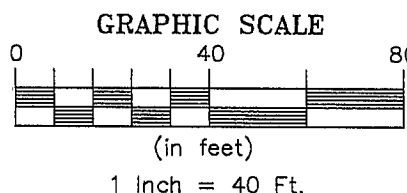
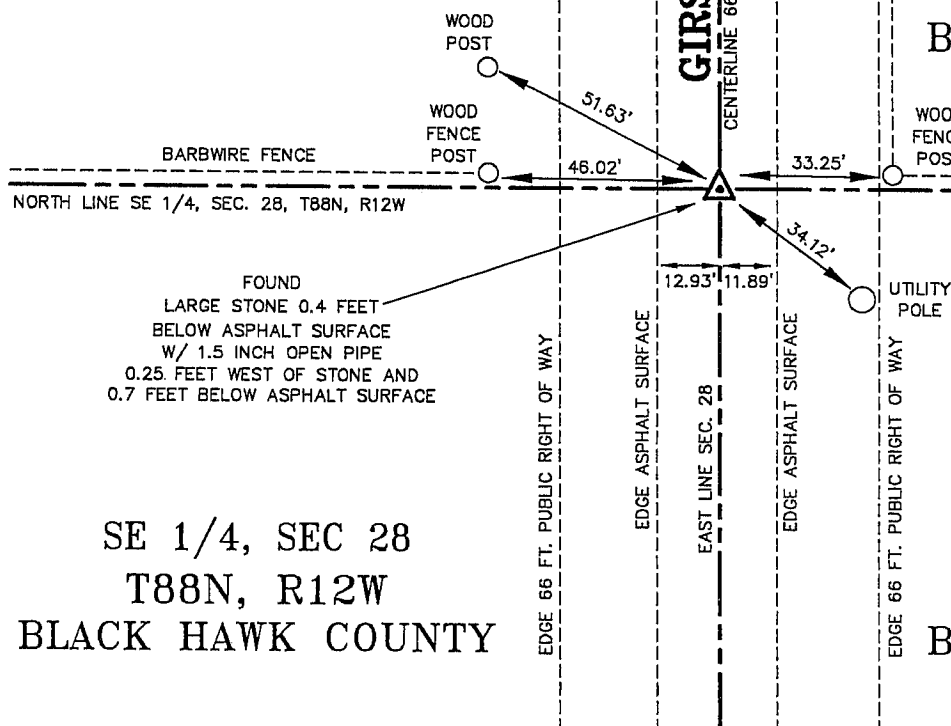
Kirk D. Eschliman, P.L.S. Iowa Lic. No. 9961, 723 Broadway Street, Waterloo, Iowa 50703 - Phone: 319-234-0509

UNITED STATES PUBLIC LAND SURVEY CORNER CERTIFICATE
OFLAND SURVEY MONUMENTS SITUATED IN SECTION TWENTY-EIGHT (28), TOWNSHIP EIGHTY-EIGHT (88) NORTH
RANGE TWELVE (12) WEST, OF THE FIFTH PRINCIPAL MERIDIAN, BLACK HAWK COUNTY, IOWA.
PREVIOUSLY RECORDED IN (NOT PREVIOUSLY RECORDED) (BOOK, PAGE, DOCUMENT NUMBER, ETC.) IN THE COUNTY RECORDER'S OFFICE.(SHOW REASON FOR PREPARING THIS CERTIFICATE, THE EVIDENCE AND DETAILED PROCEDURES USED IN ESTABLISHING THE CORNER POSITIONS AND MONUMENTATION FOUND OR PLACED.)
MONUMENT DESCRIPTION AND REMARKS:

CURRENT SECTION CORNER CERTIFICATE NOT ON FILE IN THE BLACK HAWK COUNTY RECORDER'S OFFICE.

FOUND LARGE STONE WITH 1.5 INCH OPEN PIPE ALONG THE WEST FACE. STONE IS 0.4 FEET BELOW
ASPHALT SURFACE OF GIRSCH ROAD. FOR USE IN REFERENCED FIELD SURVEY, W 1/2, SW 1/4, SECTION 28.

PLAN - VIEW

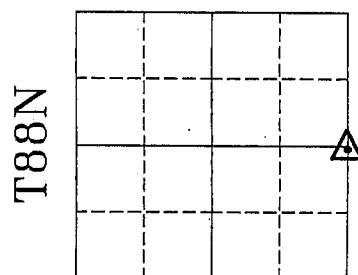
NE 1/4, SEC 28
T88N, R12W
BLACK HAWK COUNTYNW 1/4, SEC 27
T88N, R12W
BLACK HAWK COUNTYSE 1/4, SEC 28
T88N, R12W
BLACK HAWK COUNTYSW 1/4, SEC 27
T88N, R12W
BLACK HAWK COUNTYI HEREBY CERTIFY THAT THIS LAND SURVEYING DOCUMENT
WAS PREPARED AND RELATED SURVEY WORK WAS
PERFORMED BY ME OR UNDER MY DIRECT PERSONAL
SUPERVISION AND THAT I AM A DULY LICENSED LAND
SURVEYOR UNDER THE LAWS OF THE STATE OF IOWA.*Kirk D. Eschliman* DATE: 03/20/2006
KIRK D. ESCHLIMAN, P.L.S. IOWA LIC. NO. 9961
MY LICENSE RENEWAL DATE IS DECEMBER 31, 2007
PAGES OR SHEETS COVERED BY THIS SIGNATURE & SEAL: SHEET 1 OF 1FOR: MARLYS J. McDONALD & RICHARD L. FOULK
400 FIRST STREET
WASHBURN, IOWA 50706REQ. BY: KENNY JOHNSON
WASHBURN, IOWAKESS & ASSOCIATES, INC.
PROFESSIONAL LAND SURVEYORS : 723 BROADWAY, WATERLOO, IOWA 50703-5811

DATE: 03/15/2006 C.A.D.D. FILE: 06A16SCC1.DWG PROJECT NO.: 06A16

List of corners to be indexed:

Corners	Section	Township	Range
E 1/4	28	T88N	R12W

SECTION 28



R12W