

Jeffrey P. Helland, 1107 Technology Parkway, Cedar Falls, Iowa 50613-6951, (319)-266-0161

UNITED STATES PUBLIC LAND SURVEY CORNER CERTIFICATE OF

LAND SURVEY MONUMENTS SITUATED IN SECTION NO. 28, TOWNSHIP NO. 88 NORTH, RANGE
NO. 12 WEST OF THE FIFTH PRINCIPAL MERIDIAN, BLACK HAWK COUNTY, IOWA.
PREVIOUSLY RECORDED IN N/A

(SHOW REASON FOR PREPARING THIS CERTIFICATE, THE EVIDENCE AND DETAILED PROCEDURES USED IN ESTABLISHING THE
CORNER POSITIONS AND MONUMENTATION FOUND OR PLACED.)

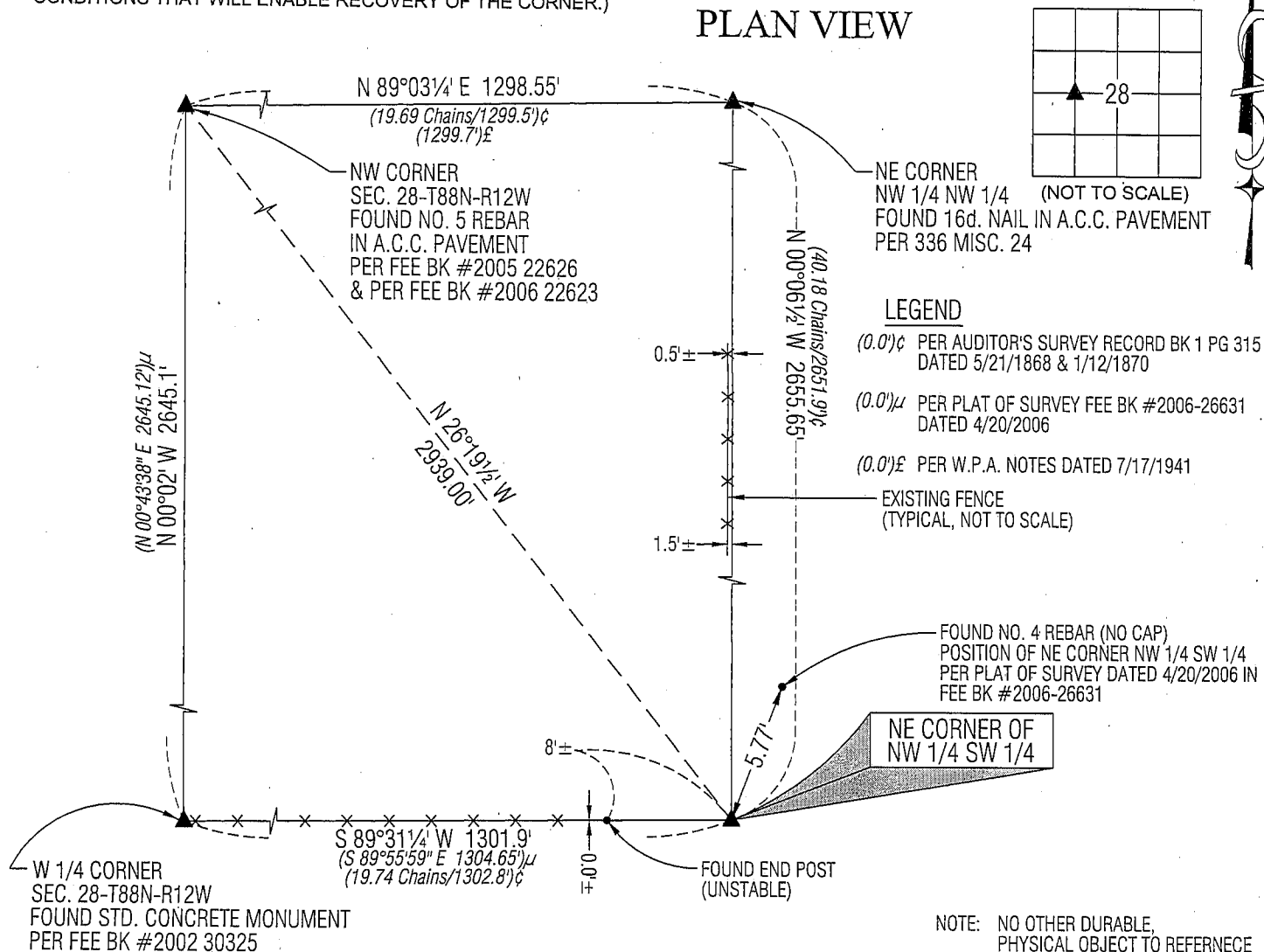
MONUMENT DESCRIPTION AND REMARKS:

NO USPLSCC ON FILE. SURVEY COMPLETED IN THE NW 1/4 OF SEC. 28-T88N-R12W.

→ **NE CORNER OF NW 1/4 SW 1/4:** AUDITOR'S SURVEY BOOK 1 PAGE 315 BY JOHN BALL DATED 5/21/1868 AND 1/12/1870
CALLS FOR [MOUND]. PLAT BOOK PUBLISHED BY IOWA PUBLISHING CO. DATED 1910 INDICATES FOUR DIFFERENT
PROPRIETORS COMMON TO THIS CORNER. 1930'S AERIAL PHOTO INDICATES PROPERTY DELINEATION IN ALL FOUR
QUADRANTS COMMON TO THIS CORNER. NO BLACK HAWK COUNTY ENGINEER REFERENCE TIES AVAILABLE. PLAT OF
SURVEY DATED 4/20/2006 RECORDED IN FEE BK #2006-26631 CALLS FOR [SET 1/2" I. PIN W/YELLOW ID CAP "IOWA-9961"].
SET NO. 4 REBAR W/ALUMINUM CAP #16264 AT BEST FIT OF EXISTING FENCE RUNNING NORTH FROM OX BOW LAKE AND
FENCE RUNNING WEST FROM CORNER. POSITION AS ESTABLISHED IF EXTENDED EAST TO A LINE RUN BETWEEN THE N 1/4
CORNER AND THE S 1/4 CORNER (BASED UPON FIELD OBSERVATIONS PER SAID PLAT OF SURVEY RECORDED IN FEE BK
#2006-26631) WOULD MATCH EXACTLY THE PRORATION OF DISTANCES FROM SAID AUDITOR'S SURVEY BOOK 1 PAGE 315
BY JOHN BALL. FOUND NO. 4 REBAR (NO CAP) 5.4' NORTH AND 2.0' EAST OF CORNER.

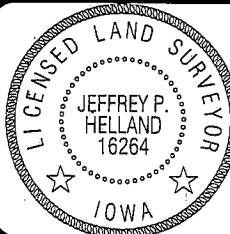
(SHOW A MINIMUM OF THREE REFERENCE TIES TO DURABLE PHYSICAL OBJECTS, RELEVANT MONUMENTS AND PHYSICAL
CONDITIONS THAT WILL ENABLE RECOVERY OF THE CORNER.)

PLAN VIEW



HELLAND ENGINEERING & SURVEYING, LTD.
1107 Technology Parkway
Cedar Falls, Iowa 50613-6951
(319)-266-0161

SHINER = 8D NAIL & 1 5/16" Ø METAL SHINER
BRASS TAG = 13/16" Ø BRASS TAG
OPC = PLASTIC CAP (O=ORANGE, R=RED, Y=YELLOW)
(00') RECORDED AS FILE NAME: 09-115C1.DWG



I hereby certify that this land surveying document was prepared
and the related survey work was performed by me or under my
direct personal supervision and that I am a duly licensed Land
Surveyor under the laws of the State of Iowa.

Jeffrey P. Helland 4/13/09
Jeffrey P. Helland
License Number 16264
My license renewal date is December 31, 2009.
All pages or sheets are covered by this seal except:

LIST CORNERS TO BE INDEXED

CORNER	SECTION	TOWNSHIP	RANGE
NE COR. NW 1/4 SW 1/4	28	88N	12W
SE COR. SW 1/4 NW 1/4	28	88N	12W
SW COR. SE 1/4 NW 1/4	28	88N	12W
NW COR. NE 1/4 SW 1/4	28	88N	12W