

SC
MISC
INDEX
MARGIN
PROOF
COMPARE

FILED FOR RECORD Apr 10, 2000 AT 4:00 P.M., AND RECORDED IN BOOK 337 OF MISC PAGE 916
Catherine S. Less RECORDER
FEE n/c
BLACK HAWK COUNTY ENGINEER'S OFFICE

020973

PREPARED BY: BLACK HAWK COUNTY ENGINEERS OFFICE
316 E. FIFTH STREET, ROOM 211 WATERLOO, IOWA 50703

PH.# (319) 833-3008
FAX.# (319) 833-3139
SLST 9-94
CERT 12-96

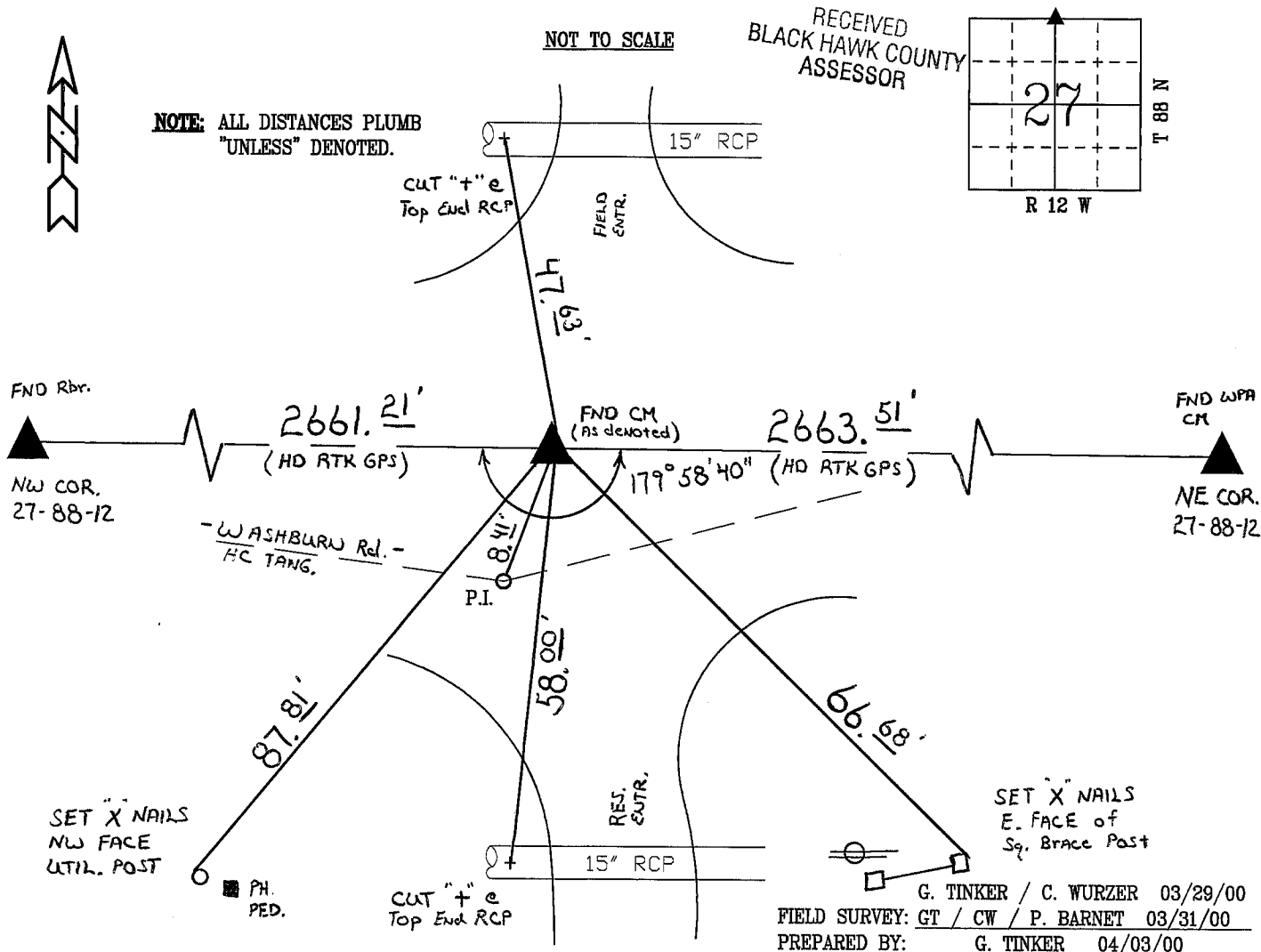
UNITED STATES PUBLIC LAND SURVEY CORNER CERTIFICATE OF
Land Survey Monuments situated in Section 27, Township 88 N,
Range 12 W, of the Fifth Principal Meridian, BLACK HAWK County, Iowa.
Previously recorded in Misc. Book n/a, Page n/a, in County Recorder's Office.

(Show reason for preparing this certificate, the evidence and detailed procedures used in establishing the corner positions and monumentation found or placed.)

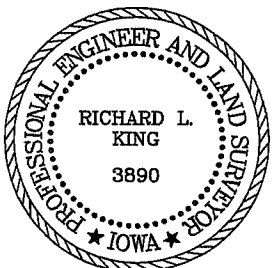
Monument Description and Remarks: LOC. NW and NE CORNERS of Section.
1973 PAVING PLANS DENOTE CORNER 7.8' N. & 2.9' E. OF FOUND P.I (ALSO
IN BK. 314 P. 77). Removed ACC 8-10" and FOUND CM STAMPED $\frac{22}{27}$ @ 3.2'
Dp. - Set 5/8" Rbr x 2.4' L. w/ yellow cap # 3890 (0.8' deep from ACC)
Set 0.80' L. Rbr to Surf. w/ 2" dia. Alum. Cap "BHCo. Land Corner" in
cold mix patch (fut. unstable), and retied as shown.

PLAN - VIEW

(Show a minimum of three reference ties to durable physical objects, relevant monuments and physical conditions that will enable recovery of the corner.)



CERTIFICATION



I hereby certify that this land surveying document was prepared and the related survey work was performed by me or under my direct personal supervision and that I am a duly licensed Land Surveyor under the laws of the State of Iowa.

Richard L. King 4/7/00 (date)
Richard L. King
License Number 3890
My license renewal date is December 31, 2001
Pages or sheets covered by this seal:
This Land Corner Certificate Only.

LIST CORNERS TO BE INDEXED

Corner	Section	Township	Range
N 1/4	27	88 N	12 W
S 1/4	22	88 N	12 W