

U.S. (IA.) PUBLIC LAND SURVEY
CORNER CERTIFICATE (Ia. 355.11)
B.H. Co. PROJECT: STP-S-C007(143)--5E-07
POYNER RD. (D38) RESURFACING PROJECT (2017)
COLD-IN-PLACE RECYCLING w/ HMA RESURFACING



Doc ID: 009371780001 Type: GEN
Recorded: 08/31/2018 at 12:42:49 PM
Fee Amt: \$0.00 Page 1 of 1
Black Hawk County Iowa
SANDIE L. SMITH RECORDER

File 2019-00003626

INDEX OF ABBREVIATIONS

(M) = "Measured" Dimension
(P) = "Platted" Dimension
(R) = "Record" Dimension
(C) = "Calculated" Dimension
"IGS" = Iowa Geodetic Survey
"WPA" = Works Progress Admin. Surveys (late 1930's to early 1940's)
"G" = per George Miller Survey (BHco Surveyor 1858-1860)
"B" = per John Ball Survey (BHco Surveyor 1866-1891)
"N" = per Nathan Barber Survey (BHco Surveyor 1908-1931)
"NP" = Reflectorless EDM Meas
"MLM" = Indirect Measure
"CM" = Concrete Monument
"SM" = Survey Marker Spike/Tag
"PK" = PK/MAG Nail Brand Style

Land Survey Monument(s) situated in Section 26, Township 88 N., Range 12 W., of the Fifth Principal Meridian (5th P.M.), BLACK HAWK County, Iowa.

Previously recorded in File 2007, Page 009113, in County Recorder's Office.

(Show reason for preparing this certificate): The corner monument has been Replaced or Modified, per Ia. Code 355.11(1)(c)

(Evidence and detailed procedures used in establishing the corner position(s) and monumentation found or placed.)

Monument Description and Remarks: N.E. CORNER.

CORNER RESET & TIES UPDATED PER MILL AND FILL (w/COLD-IN-PLACE RECYCLING) & H.M.A. RESURF. PROJECT STP-S-C007(143)--5E-07. PRIOR TO PROJ., FOUND #5 REBAR AS PER PLS CERT. IN BLACK HAWK COUNTY RECORDER OFFICE, DTD. OCT. 20th, 2006. CORNER RESET w/ 4 1/2" L. MAG SPK. w/MTL. P.L.S. WASHER @ ±4' S. OF C.L. JOINT. ALIGNED ±2" W. OF W. EDGE OF GRAVEL DRIVE (RESID. #7010 & #7018) TO S.

Software: TopSurv v.8.2.3 w/FC-2500

Project Point ID: #1200

PLAN VIEW

"NOT TO SCALE"

BHco Hist. Ties: N/A

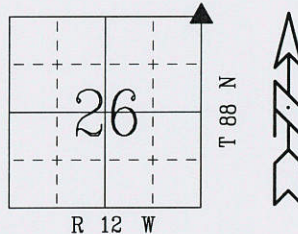
FIELD BOOK: (n/a), per Draft Cert. (L.D.)

(Show a minimum of three reference ties to durable physical objects, relevant monuments and physical conditions that will enable recovery of the corner.)

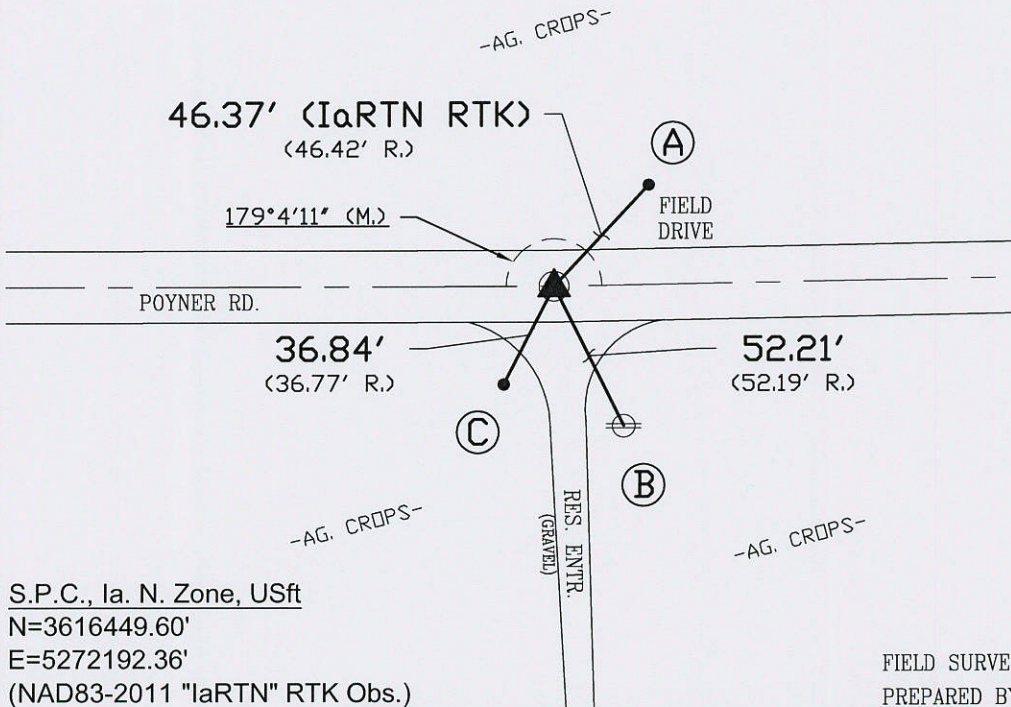
- TIES PER EDM MEASURE IN BOTH PRISM "AND" NON-PRISM MODE, WHILE UTILIZING "INDIRECT" (MLM) MEASURE, WITH ALL DISTANCES PLUMB/HORIZ. (HD), UNLESS DENOTED.
- SECTION LINE MEASURE REFERS TO "LOCAL GROUND" DIST. AND INCLUDES ELLIPSOIDAL (COMBINED) SCALE FACTOR FROM S.P.C. GRID INVERSE (AS OBSERVED), PER AVG. SCALE FACTOR = 1.000084604206x

E. 1/16TH COR. (N.),
(SECT. 26-T88-R12)
1319.15' (M./GRND.)
(vs. 1319.18' P.)

W. 1/16TH (N) COR.
(SECT. 25-T88-R12)
1307.69' (M./GRND.)
(vs. 1307.63' P.)



- (A) FND. CUT 'X' IN W. END OF 12" DIA. RCP.
- (B) FND. NAIL w/WASHER #16775 ±1' HT. ON W. FACE OF P.P.
- (C) FND. CUT 'X' IN W. END OF 12" DIA. RCP.



S.P.C., Ia. N. Zone, USft

N=3616449.60'

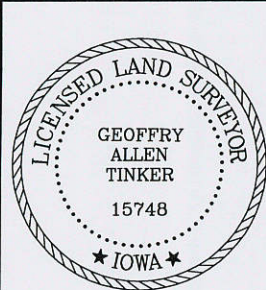
E=5272192.36'

(NAD83-2011 "IaRTN" RTK Obs.)

FIELD SURVEY: G.T. & L.D. 7/28/17

PREPARED BY: G.T. & L.D. 8/27/18

CERTIFICATION



I hereby certify that this land surveying document was prepared and the related survey work was performed by me or under my direct personal supervision and that I am a duly licensed Land Surveyor under the laws of the State of Iowa.

Geoffrey Allen Tinker 08/31/2018
Geoffrey Allen Tinker (date)

License Number 15748

My license renewal date is December 31, 2018

Pages or sheets covered by this seal:

This Land Corner Certificate Only.

LIST CORNERS TO BE INDEXED

Corner	Section -	Township -	Range
N.E. Cor.	26	88 N	12 W
N.w. Cor.	25	88 N	12 W
S.E. Cor.	23	88 N	12 W
S.W. Cor.	24	88 N	12 W



PREPARED BY:

BLACK HAWK COUNTY
ENGINEER'S DEPT.
316 E. FIFTH ST., RM 211
WATERLOO, IA. 50703
PH. 319-853-3008
FAX. 319-853-3139

surveyor@co.black-hawk.ia.us