

U.S. (IA.) PUBLIC LAND SURVEY  
CORNER CERTIFICATE (Ia. 355.11)  
B.H. Co. PROJECT: STP-S-C007(143)--5E-07  
POYNERRD. (D38) RESURFACING PROJECT (2017)  
COLD-IN-PLACE RECYCLING w/HMA RESURFACING



Doc ID: 009371770001 Type: GEN  
Recorded: 08/31/2018 at 12:41:39 PM  
Fee Amt: \$0.00 Page 1 of 1  
Black Hawk County Iowa  
SANDIE L. SMITH RECORDER

File 2019-00003625

INDEX OF ABBREVIATIONS

(M) = "Measured" Dimension  
(P) = "Platted" Dimension  
(R) = "Record" Dimension  
(C) = "Calculated" Dimension  
"IGS" = Iowa Geodetic Survey  
"WPA" = Works Progress Admin. Surveys (late 1930's to early 1940's)  
"G" = per George Miller Survey (BHco Surveyor 1858-1860)  
"B" = per John Ball Survey (BHco Surveyor 1866-1891)  
"N" = per Nathan Barber Survey (BHco Surveyor 1908-1931)  
"NP" = Reflectorless EDM Meas  
"MLM" = Indirect Measure  
"CM" = Concrete Monument  
"SM" = Survey Marker Spike/Tag  
"PK" = PK/MAG Nail Brand Style

Land Survey Monument(s) situated in Section 26, Township 88 N., Range 12 W., of the Fifth Principal Meridian (5th P.M.), BLACK HAWK County, Iowa.

Previously recorded in File #2009, Page 010814, in County Recorder's Office.

(Show reason for preparing this certificate): The corner monument has been Replaced or Modified, per Ia. Code 355.11(1)(c)

(Evidence and detailed procedures used in establishing the corner position(s) and monumentation found or placed.)

Monument Description and Remarks: E. 1/16th CORNER. (N.)  
CORNER RESET & TIES UPDATED PER MILL AND FILL (w/COLD-IN-PLACE RECYCLING) & HMA RESURF. PROJECT STP-S-C007(143)--5E-07. PRIOR TO RESURF. PROJ., FOUND STEEL SPIKE IN ACC PVM'T MARKED "SURVEY MARKER" @ ± PHYS. C.L. OF POYNERRD.(D38). NO CURRENT CERT. OF RECORD. CORNER REFERENCE PART OF SECTIONLINE & R/W SURVEY FOR GILBERTVILLE ROAD RECONSTRUCTION PROJECT, S.E. OF TOWN OF GILBERTVILLE. RESEARCH OF AREA PLATS NOTES CORNER REF. PER FEE BK. 2009-003310. PHONE CONV. ON 12/03/08 w/PLS #9961 STATED CORNER WAS "SET" AS PART OF SAID PLAT, AT THEOR. SPLIT OF N. LINE, NE1/4. DIFFERENCE OFF SAID LINE NOTED @ 0.29' N. CORNER FURTHER NOT REF. TO RECORD PLAT SOUTH ALONG "EAST LINE OF SW1/4-NE1/4 OF SAID SECTION", PER MISC. BK. 287 p.102 AS STUBED IN FROM OCCUP. LINE (CORNER POST) OF RECORD. RESET 1/2" L. MAG SPK. w/MTL. P.L.S. WASHER @ ±3' N. OF C.L. HMA JOINT, & ALIGNED ± w/OCCUPATION LINE TO S.

Software: TopSurv v.8.2.3 w/FC-2500

Project Point ID: #1100

PLAN VIEW

"NOT TO SCALE"

BHco Hist. Ties: N/A

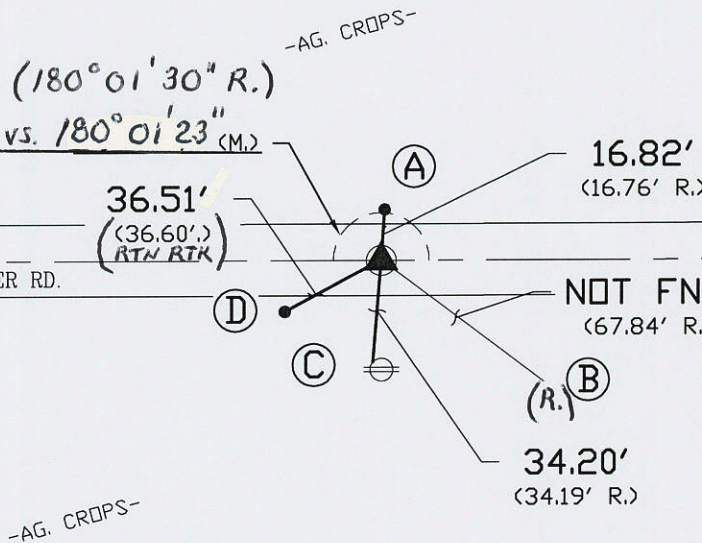
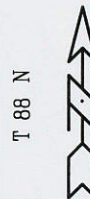
FIELD BOOK: BHco. Bk. #488 p.31

(Show a minimum of three reference ties to durable physical objects, relevant monuments and physical conditions that will enable recovery of the corner.)

1.) TIES PER EDM MEASURE IN BOTH PRISM "AND" NON-PRISM MODE, WHILE UTILIZING "INDIRECT" (MLM) MEASURE, WITH ALL DISTANCES PLUMB/HORIZ. (HD), UNLESS DENOTED.

2.) SECTION LINE MEASURE REFERS TO "LOCAL GROUND" DIST. AND INCLUDES ELLIPSOIDAL (COMBINED) SCALE FACTOR FROM S.P.C. GRID INVERSE (AS OBSERVED), PER AVG. SCALE FACTOR = 1.000084604206x

N. QTR. COR.  
(SECT. 26-T88-R12)  
1319.21' (M./GRND)  
(vs. 1318.7' WPA @ 1/4-1/4 FNC. N-S)  
NE COR.  
(SECT. 26-T88-R12)  
1319.15' (M./GRND)  
(vs. 1319.18' P.)



- (A.) SET #5 REBAR w/ALUM. CAP ±6' N. OF ACC & ALIGNED N. OF CORNER.
- (B.) STL. SPK. "NOT FND." @ N.W. FACE OF 32" DIA. DECID. TREE @ ±3.5' HT.
- (C.) FND. STL. SPK. @ W. FACE OF P.P. @ ±3.6' HT.
- (D.) SET #5 REBAR w/ALUM. CAP ±6' S. OF ACC.

S.P.C., Ia. N. Zone, USft

N=3616448.07'

E=5270873.32'

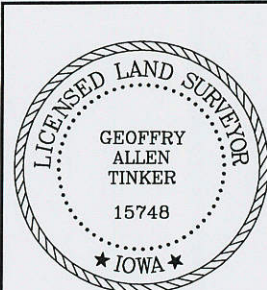
(NAD83-2011 "IaRTN" RTK Obs.)

RES. #6876

FIELD SURVEY: G.T. & L.D. 7/26/17

PREPARED BY: G.T. & L.D. 8/27/18

CERTIFICATION



I hereby certify that this land surveying document was prepared and the related survey work was performed by me or under my direct personal supervision and that I am a duly licensed Land Surveyor under the laws of the State of Iowa.

*Geoffry Allen Tinker* 08/31/2018  
Geoffry Allen Tinker (date)

License Number 15748

My license renewal date is December 31, 2018

Pages or sheets covered by this seal:

This Land Corner Certificate Only.

LIST CORNERS TO BE INDEXED

Corner	Section	Township	Range
N.E. Cor.	26	88 N	12 W
NW1/4-NE1/4			
S.E. Cor.	23	88 N	12 W
SW1/4-SE1/4			



PREPARED BY:

BLACK HAWK COUNTY  
ENGINEER'S DEPT.  
316 E. FIFTH ST. RM 211  
WATERLOO, IA 50703  
PH. 319-853-3008  
FAX. 319-853-3139  
surveyor@co.black-hawk.ia.us